



The Ohef Sholom Temple Monthly News Publication

# THE TEMPLE POST

Established 1844

Volume 57, Issue 10

May 2017

## MISSION STATEMENT:

*"My House Shall be  
Called a House of Prayer  
For All Peoples"*

To provide a spiritual,  
cultural and educational  
environment inspired  
by the highest  
Reform Jewish values.

## What's Inside:

Clergy Corner .....	2
Worship .....	3
Announcements .....	3
President's Report.....	4
Scholarship Committee ..	4
Donations .....	5
Caring Committee.....	6
Long Range Planning .....	6
Our Values.....	7
Confirmation.....	8-9
Life & Legacy.....	10
Eco-Judaism .....	11
Sisterhood .....	12
Birthdays & Yahrzeits ...	13
Social Events .....	14
Calendar .....	15

*We hope you will be able to join us for the presentation of*

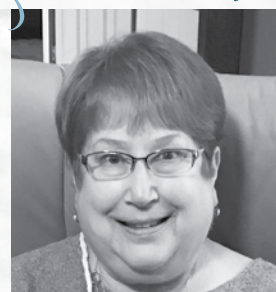
## THE KURT ROSENBAACH *Award*

Honoring  
**Barbara  
Dudley**

*Friday, May 5, 2017*

This prestigious award, created in 2004 by our Board of Directors, honors a Board member whose outstanding service and contributions to Ohef Sholom Temple best embodies the qualities of leadership and commitment demonstrated by our beloved Kurt Rosenbach.

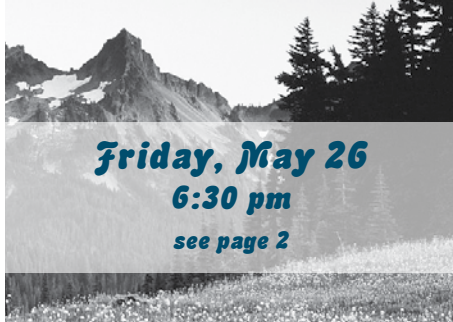
6:30 p.m. During Shabbat Services



## *So Long, Farewell, L'Khita-ot Shalom*

**Special Shabbat Service  
and Oneg Honoring  
Cantor Wally and his Family**

**Friday, May 26**  
**6:30 pm**  
*see page 2*



## Ohef Sholom Temple CONGREGATIONAL MEETING

**May 18, 2017**

Reception at 6:30 pm, Meeting at 7:00 pm

Join us for the Installation of Karen Fine as President and new Directors & Board members.



## CONFIRMATION CLASS OF 5777 / 2017

*See page 8 & 9*



## CLERGY

**Senior Rabbi**  
Rosalin Mandelberg  
rabbi@ohefsholom.org

**Cantor**  
Wally Schachet-Briskin  
cantorwally@ohefsholom.org

**Interim Associate Rabbi**  
Deborah Bodin Cohen  
rabbicohen@ohefsholom.org

**Rabbi Emeritus**  
Lawrence Forman  
rabbiforman@ohefsholom.org

## CLERGY CORNER

*"Endings are almost always a little sad, even when there is something to look forward to on the other side."*



**Rabbi Roz**  
Senior Rabbi  
rabbiroz@ohefsholom.org

Dear Friends,

At the end of this month, on Friday night May 26th at 6:30 p.m., we will bid our cherished Cantor Wally a fond farewell. I hope you can join us because we have so much for which to be grateful for his eight years of service to Ohef Sholom.

Cantor Wally elevated our prayers with his beautiful, mellifluous voice. His lack of ego inspired all of us to participate with the fullness of our hearts, and our Friday night worship community expanded greatly during his tenure. Every person who attended a service he led, whether on Shabbat or the High Holidays, was engaged and uplifted...myself, Chuck Woodward, and our combined professional and volunteer choir included.

Cantor also touched our souls deeply through his kindness and gentleness, visiting us at our bedsides in hospital rooms, nursing homes and assisted living facilities, and in our homes. And his childlike worldview and goofy sense of humor endeared him to us in the stories and jokes that he shared. His lightness was a wonderful balance to my intensity...which was always appreciated!

Perhaps Cantor Wally's greatest service was to our youth. I cannot recall a single B'nai Mitzvah student (of the 150 plus with whom he worked) who didn't love the time they spent with him. All confessed at their services that his patience and humor were invaluable and that they would not be standing on

the pulpit that day were it not for him. I know that our Confirmands, our Youth Choir members, and those who participated in Purim Shpiels, the young and the young at heart, enjoyed his teaching and leadership.

Please join me on Friday, May 26th at 6:30 p.m. in wishing Cantor Wally, Tammy, Channa, and Micah a fond farewell and a Todah Rabbah, a big thank you, for all he has given Ohef Sholom.

## So Long, Farewell, L'Chitra-ot Shalom

**Special Shabbat Service  
and Oneg Honoring  
Cantor Wally and his Family**

**Friday, May 26  
6:30 pm**



**Sinai Chapel  
Ohef Sholom Temple**



## STAFF

**Executive Director**  
Linda Peck  
linda@ohefsholom.org

**Director of Family Learning**  
Chris Kraus  
chris@ohefsholom.org

**Music Director**  
Charles Woodward  
chuck@ohefsholom.org

**Educational Consultant**  
Kitty Wolf  
kitty@ohefsholom.org

**Operations Director**  
Mike Phillips  
mike@ohefsholom.org

**Sunday Learning Administrative Assistant**  
Jim Dunn  
jim@ohefsholom.org

**Graphic Designer**  
Elyse Stinman  
elyse@ohefsholom.org

**Administrative Assistant**  
Wendy Whedbee  
wendy@ohefsholom.org

**Director of Congregational Life**  
Shelley Stephens  
membership@ohefsholom.org

**Controller**  
Anna Rivera  
bookkeeper@ohefsholom.org

**Administrative Assistant**  
Brittany Harper  
brittany@ohefsholom.org

## LAY LEADER

**President**  
Ted Kaufman  
president@ohefsholom.org



# ANNOUNCEMENTS

Congratulations to **Katelynn McAraw** whose winning essay about our *Better Together* program, which is a lunch and learn series with Temple Teens and Beth Shalom Seniors, has been submitted for the national competition. Her essay was chosen from a panel of 7 judges, and has been submitted for a national award. In the meantime, Katelynn qualifies for a scholarship for 50% of a semester program or gap year in Israel.

Congratulations to **Kirby and Adam Lefkowitz** on the birth of their son *Jack Rylan*. Congratulations also to big brother *Shane*!

Congratulations to **Leo & Gloria Simon** on their *65th Anniversary*.

**Keano Rich** and **Evan Allen**, 10th graders at Ocean Lakes Math and Science Academy, won *1st Place* in the Computer Science senior division for their project on neural networks at the Tidewater Science & Engineering Fair at ODU. They now qualify to compete in the Virginia State Science & Engineering Fair to be held at VMI, March 24-25. Keano Rich, a former HAT student, is the son of Gerald Rich and **Sherri Wisoff**, and stepson of **William Boykin**. Evan Allen is the son of **Lyuba and Marc Allen** and stepson of **Ihor Chernyavskyy**.

# CONDOLENCES

*Ohel Sholom offers heartfelt condolences to the following members and friends:*

**Robert (Martha) Goodman**, on the loss of his mother, *Augusta S. Goodman*.

**Cantor Jen Rueben**, on the loss of her grandmother, *Nina Douglas*.

# MAZEL TOV!



Congratulations to **Madison Longwater** on her upcoming **Bat Mitzvah** on **May 6!**

Daughter of Adam & Karen Longwater, granddaughter of Marvin\* & Sandra Longwater and George & Jean Heidig.



Congratulations to **Jacob Shanker** on his upcoming **Bar Mitzvah** on **May 27!**

Son of Jack & Gema Shanker, brother of Isabella Velez, grandson of Michael & Deanna Shanker and Claude & Brenda Watkins.



Congratulations to **Isabella Velez** on her upcoming **Bat Mitzvah** on **May 27!**

Daughter of Jack & Gema Shanker, sister of Jacob Shanker, granddaughter of Rigoberto & Martha Rodriguez, and Joe & Carol Velez.

# TORAH PORTIONS

## May

**May 2** 6 Iyar  
*Torah Study – 6:00 pm*

**May 6** 10 Iyar  
*Torah Study – 9:00 am*

Parashat Acharei Mot-K'doshim, Lev. 16:1-20:27

Haftarah: Amos 9:7-15

**May 9** 13 Iyar  
*Torah Study – 6:00 pm*

**May 13** 17 Iyar  
*Torah Study – 9:00 am*

Parashat Emor, Lev. 21:1-24:23

Haftarah: Ezekiel 44:15-31

**May 16** 20 Iyar  
*Torah Study – 6:00 pm*

**May 20** 24 Iyar  
*Torah Study – 9:00 am*

B'har-B'chukotai, Lev. 25:1-27:34

Haftarah: Jeremiah 16:19-17:24

**May 23** 27 Iyar  
*Torah Study – 6:00 pm*

**May 27** 2 Sivan  
*Torah Study – 9:00 am*

Parashat B'midbar, Num. 1:1-4:20

Haftarah: Hosea 2:1-22

**May 30** 5 Sivan  
*Torah Study – 6:00 pm*

**May 31** 6 Sivan

The Book of Ruth is read Exod. 19:1-8, 20:1-14; Haftarah: Isaiah 42:1-12 or Ezekiel 1:1-28, 3:12

**OST Walking Group**

You are invited to join the **OST Walking Group** for a walk on the Boardwalk at Virginia Beach either **Thursday, May 18** or **Sunday, May 21**. Meet at the Temple to carpool, leaving at 8 a.m., or outside Waterman's Surfside Grill, 415 Atlantic Avenue, VB at 8:40. You may park at the nearby parking garage. We will have brunch at Waterman's following the walk.

Please RSVP by calling Sharon Nusbaum at 515-4226 or emailing her at [sharonuz@aol.com](mailto:sharonuz@aol.com) so that we know who will be arriving at either location and for a count for the reservation at Waterman's.

NJURBANFOREST2012

## A WORD FROM THE PRESIDENT

Shalom, Y'all, for the last time.

Welcome to my final President's Page. After working with me for two years, **Karen Fine** takes over as the **61st President** of **Ohef Sholom Congregation** on Thursday, May 18. I hope you will attend our annual Congregational meeting to watch her installation.

It has been a privilege serving you these past 24 months, following in the footsteps of my father **George Kaufman**, my grandfather **Chuck Kaufman**, and the 17 other Past Presidents I bear some relation to, those with the last names of **Hofheimer**, **Nusbaum**, **Mansbach**, or **Margolius**. This includes my favorite name from our Hall of Presidents, **Jefferson Davis Hofheimer**, my great grand-uncle. If you ever wonder how someone gets a name like that, you should have asked his brothers, **Julius Caesar Hofheimer** and **Henry Clay Hofheimer** (the 1st in a line of 3). While we are at it, ask me about Moses Lafayette Hofheimer sometime. There is history there.

In case you who wondered, the Hebrew letters below my photo spell "Shalom Y'all." It comes from the *Southern Jewish Historical Society* website, which is highly recommended.

You may have noticed "Micah 6:6-8" at the bottom right hand corner of each of my articles on the President's Page. This is a reference to my favorite Bible passage from *Micah* (Chapter 6, Verses 6 through 8), which also hangs above my desk at work and serves as my own personal philosophy of living a Jewish life:



**Ted Kaufman**  
Temple President  
*Micah 6:6-8*

שְׁלוֹם יְאֵל!

*With what shall I come before the Lord and bow myself before God on high? Shall I come before him with burnt offerings, with calves a year old? Will the Lord be pleased with thousands of rams, with ten thousands of rivers of oil? Shall I give my firstborn for my transgression, the fruit of my body for the sin of my soul? He has told you, O Mortal, what is good; and what does the Lord require of you but to do justice, and to love kindness, and to walk humbly with your God.*

Intrinsic to this simple formula for Ethical Living is the requirement to be good Stewards for our Community and Serve its greater needs, however possible. I trust each of you will find meaning in these words and become the Leaders of our Community your Families and Temple Leadership know you can be. Your judgment is needed. What are you waiting for? HINENI (*Here am I, Send Me!*)

Thank you all for your heartfelt support during our Temple Office transitions of the past 2 years. It was much appreciated.

Don't think this hasn't been Fun.....because it hasn't!! Well, it wasn't fun ALL the time. It has, however, been very rewarding. I thank you for affording me this opportunity to serve my beloved Temple.

Todah Raba from a Grateful Ted Kaufman  
*Micah 6:6-8*

## SCHOLARSHIP COMMITTEE

**Applications Due  
June 30, 2017**

### College and Medical School Scholarships

These OST scholarships have been established at your Ohef Sholom Foundation as a result of the outstanding generosity of several Temple families. Awards are not based on financial need. There are four undergraduate college funds: (1) the Goldback Scholarship Fund, (2) the Kanter-Levy Scholarship Fund, (3) Sarah and Edward Levy Fund II, and (4) the Sarah Cohen Scholarship Fund. One of the funds is expressly for students who are not Jewish. These funds assist in financing a recipient's undergraduate college education. Another Sarah and Edward Levy Fund is available to assist the children of Ohef Sholom Temple members in good standing in financing their medical school education. While certainly not a "full ride," these scholarships are usually enough to provide significant assistance to purchase books and supplies. Applications for these scholarships are available in the Temple office or online at <http://www.ohefsholom.org/community/youth/youth-scholarships>.

Last year, OST awarded \$18,600 in scholarships to 16 students. If you have any questions about these scholarships or would like to make a contribution to scholarship funds, please call the Temple office at 625-4295.

**Ed Kramer**  
Scholarship Committee Chair





# CARING COMMITTEE

## Caring for Others - Caring for Ourselves

Our OST Caring Committee works in partnership with Rabbi Roz to support our congregation in times of joy and sorrow. We mark sacred moments in our lives together, perform deeds of loving kindness, and offer meaningful outreach to guide our community in living a life of spiritual and physical well being.

We are in the process of creating a new sub-committee of the Caring Community to serve our Ohef Sholom family. The goal of this sub-committee, which will be led by Linda Fox-Jarvis, is to assemble a group of volunteers who are committed to assisting our clergy in offering comfort and support to Temple members and their families in times of need. All volunteers will receive the applicable training necessary to engage in these acts of loving kindness as they reach out to the OST community with helping hands and caring hearts. The services this committee will provide include assisting with meals and transportation, as well as supportive visits, calls and notes to members who are ill, grieving, or just in need of someone to talk to. We anticipate creating 3 teams (as described to the right) to serve OST; however, we are very much in the planning stages, and this is subject to change/refinement.

If you would like to join in this sacred mission, please contact Linda Fox-Jarvis at 757-335-1200 or [Linda@remaxcoast-country.com](mailto:Linda@remaxcoast-country.com).

The Caring Community team invites congregants to join our other sub-committees and to help in planning and participating in our programs. **New ideas are always welcome.** We look forward to hearing from you!



# 1

### Visiting team:

- Visiting ill/injured/recovering in hospital/rehab and upon return home.
- Visiting/Calling the lonely and isolated at home and in independent living/assisted living/nursing care facilities.
- Involves training and confidentiality commitment.

# 2

### Vigil & Bereavement team:

- Visit and support the terminally ill and their caregivers
- Assist with funeral & Shiva arrangements
- Provide post funeral assistance and support for grieving family members.
- Involves training and confidentiality commitment.

# 3

### Driving & Food Support Team

- Driving to services and Temple events
- Picking up families at airport, carpool etc.
- Coordinating food and meal support with sisterhood & men's club for homebound, recovering, grieving OST members.
- Providing food & other support to new mothers/fathers.

### Sharon Ross

Caring Committee Chair  
757-617-0101, [S4ross@cox.net](mailto:S4ross@cox.net)

## ONGOING PROJECTS

### SOUP KITCHEN

Monday, May 29  
9:30 am - 1:30 pm

**Dorianne Villani**  
[dvillani@cox.net](mailto:dvillani@cox.net)

### QUILTING GROUP

Thursday, May 11 & 25  
10:00 am - 1:00 pm

Tuesday, May 16 5:30 pm - 8:00 pm  
**Marsha Moody** [vamoody1@verizon.net](mailto:vamoody1@verizon.net)

### ECO-JUDAISM PROGRAM

Sunday, May 21  
10:30 am

**Alyssa Muhlendorf**  
[alyssajorgenson@gmail.com](mailto:alyssajorgenson@gmail.com)

## LONG RANGE PLANNING

### OUR VALUES DRIVE OUR PLAN

Ohef Sholom held its first Listening Campaign from June through November 2016. There were 200 individuals interviewed (mostly face to face), and 48 electronic surveys compiled.

On December 11, 30 congregants (Board members, staff and trained listeners) met and reviewed hundreds of your answers to the question: What do you think Ohef Sholom Temple should stand for?

The group then set about to crystallize the comments into

guiding principles that will serve as the moral compass for our members and the community at large. They then whittled down 16 themes to the top six values. These values (pictured to the right) became the underpinning of OST's Long Range Plan for 2017-2022 and beyond.

To learn more about the Listening Campaign and the Long Range Plan, come to the Congregational Meeting on May 18. When you come, you will also practice our most important value: that of being warm, welcoming and inclusive.

# OHEF SHOLOM TEMPLE - THIS IS WHO WE ARE

## Our Values

### WE ARE A HOUSE OF PRAYER FOR ALL PEOPLES

#### *We welcome*

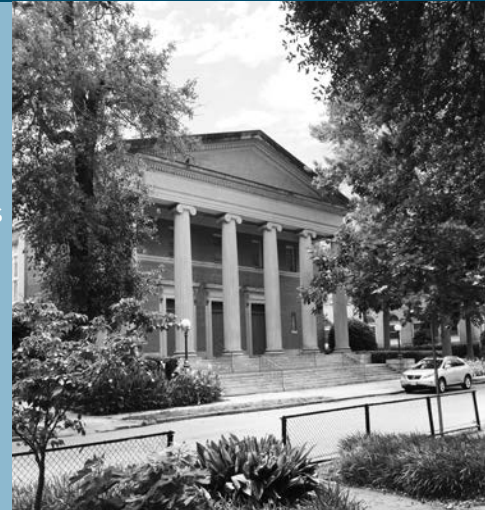
- Jewish people of every age, singles, couples and families, who represent all forms of Jewish practice
- People in interfaith relationships and those other religious beliefs
- Those with special needs and members of the LGBTQ communities.

#### *We conduct*

- Our affairs with respect, loving-kindness, openness and honesty
- Financial operations in a responsible and sustainable way.

#### *We believe*

- All people are created in the image of God.



### WE STRIVE TO BETTER OUR WORLD

#### *We practice our religion*

- Weaving Jewish spirituality into our acts of caring
- Improving ourselves, our relationships, our communities and beyond



### WE CONNECT WITH OUR COMMUNITY:

#### *We engage in outreach*

- Sharing our faith and values with Jewish and non-Jewish communities
- Celebrating what we all have in common.



### WE ARE PROUD OF OUR HERITAGE

#### *We express our pride*

- Preserving our Temple and its long history as a house of Reform Jewish continuity.
- Uplifting worship, soulful music and engaging programming.



### WE ENCOURAGE JEWISH LEARNING

#### *We provide programs for all ages*

- Studying Torah and Jewish texts to guide each person's spiritual journey
- Engaging in lifelong learning.



### WE ARE COMMITTED TO ISRAEL

#### *We strengthen our ties*

- Learning about our religious, historical and cultural connections
- Countering anti-Israel and anti-Semitic propaganda through education, communication and travel.



# Congratulations to the Ohef Sholom Temple

## CONFIRMATION CLASS OF 5777 / 2017



### HANNAH EMILY ABRAHAM

Hannah is the daughter of David and Rachel Abraham, sister of Anne Abraham and granddaughter of Gustav Kenneth and Joan Johnson, and Henry and Sugar Abraham. She is a 2nd generation confirmand of Ohef Sholom Temple. She became a Bat Mitzvah in June 2013. Hannah will be spending five weeks in Israel this summer with her beloved fellow campers. For the past five years Hannah has attended Camp

Harlam, a reform Jewish camp in Pennsylvania. Next year she plans to be a CIT, Counselor in Training, and hopes to one day work there as a Camp Counselor. Hannah is an honor roll student at First Colonial High School where she is also a member of the Varsity Lacrosse team.



### ELIJAH PASHALL KOHN

Elijah is the son of Michael and Teresa Kohn, brother of Isaac Kohn and grandson of Nina and Dave Kohn, and Judy and Bert Paschall. He is a 1st generation member of Ohef Sholom and has been attending since pre-school. Eli became a Bar Mitzvah in October of 2013. He has been a Hebrew Studies assistant for three years and plans on becoming a Sunday Religious Studies assistant after confirmation. Eli is a 10th grade AP

student at Maury High School, where he is a member of the Model United Nations. He has been playing bass in the school orchestra for the past four years and is also a member of a local band. Eli hopes to pursue a career in politics.



### KATHERINE "KACEY" CECELIA COOPER

Kacey is the daughter of Erik and Betsy Cooper and the sister of Hannah and Tanhen Cooper. Her grandparents are Charles and Minette Cooper and Joe and Terri Vita. Kacey is a 4th generation member of Ohef Sholom Temple. Religious school began early for Kacey at 4 years old and she became a Bat Mitzvah on April 26, 2014. When Kacey was younger, she participated in the

Purimspiel and has enjoyed several OSTY events. Kacey is a high honor student in the 9th grade at Norfolk Academy. She is a three-sport athlete excelling in soccer, volleyball, and track and field. This summer, Kacey will be a CIT at Camp Pinemere in the Poconos.



### ETHAN ALEXANDER KUTNER

Ethan is the son of James Kutner and Elizabeth Nguyen, brother of Claire Kutner, and Grandson of Samuel Kutner and Gloria Kutner, and Ngiam and Hoa Le Nguyen. He is a 1st generation member of Ohef Sholom Temple. He began religious school in 9th grade and became a Bar Mitzvah in June of 2014. Ethan was a madrich/assistant at Sunday learning for one year in 9th grade. He is a student at Hampton Roads

Academy and is a member of the band and tennis team.



### HAILEY RENEE FOER

Hailey is the daughter of Jerry and Tammi Foer, sister of Lindsey and the granddaughter of Warren and Rosalind Foer and Michael and Marilyn Chertoff. Hailey began her religious studies at Ohef Sholom Temple in the 2nd grade, after attending Strelitz Preschool and Hebrew Academy of Tidewater Kindergarten. She became a Bat Mitzvah October 19, 2013. She is an OSTY board member and is a Hebrew Studies Madricha.

Hailey is in 10th grade honors classes at Maury High School. She is a member of the Maury Rowing Club and the Serenity Junior Circle of the Children's Hospital of the King's Daughters (as an extension of her Mitzvah project). She will be a part of Camp Silver Beach's Leadership Development Program this summer.



### BRANDON ARTHUR HOWE

Brandon is the son of Tom and faYe Howe, brother of Hannah Howe, and grandson of Bernard and Gertrude (of blessed memory) Kahn, and Arthur and Betty Howe. He is a 2nd generation member of Ohef Sholom Temple. He began religious study in Pre-K and participates in Ohef Sholom Temple Youth (OSTY) whenever possible. Brandon attends Rivermont School Tidewater. He has volunteered at the Virginia Zoo. He also volunteers with the Hampton

Roads Foster/Adoptive Family Foundation.



### The Confirmation Class of 2017

Ohef Sholom Temple

Invites You to Join Us as We  
Celebrate Our Commitment  
to Torah, our Temple Family  
and our Jewish Community

Saturday, the twentieth of May  
Two thousand seventeen  
Ten-thirty in the morning

Ohef Sholom Temple  
530 Raleigh Avenue  
Norfolk, Virginia

Luncheon Immediately Following the Service



# Congratulations to the Ohef Sholom Temple

## CONFIRMATION CLASS OF 5777 / 2017



### NAOMEI ELIZABETH LIDMAN

Naomei is the daughter of Marion and Roger Lidman, granddaughter of Bernard\* and Frances \*Lidman, Mildred\* and Marvin Johnson. A third generation member of Ohef Sholom Temple, Naomei began her Jewish education as a two year old at the Jewish Community Center in Norfolk. She attended the Early Childhood Education Center and Hebrew School for pre-K and kindergarten, forming many of the friendships she

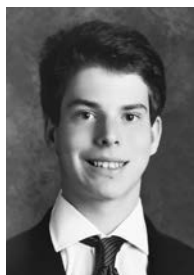
has today within the Ohef Sholom family. In first grade, she began her religious studies at Ohef Sholom Temple and was called to the Torah as a Bat Mitzvah in May of 2014. For the past five years, Naomei has attended Capital Camps, a Reform Jewish summer camp, and this summer will return as a Leader in Training. Naomei is a participant in OSTY and BBYO and attends Maury High School in Norfolk in the Honors A/P Program focusing on math and science. She is a violinist with the Maury High School Concert Orchestra and is coxswain on the Maury High School club rowing team. She plans on continuing her religious studies with Ohef Sholom Temple and throughout her college and adult life.



### KATELYNN JOLIE MCARAW

Katelynn is the daughter of Michael and Courtney McCaraw, with brothers Samuel and Aidan McCaraw, and the granddaughter of David Gerin and Roxanne Wessler as well as Thomas and Pamula McCaraw. She became a Bat Mitzvah at Temple Emanu-El on February 15, 2014. Katelynn began attending Ohef Sholom in 2016 as part of the Confirmation class, while also taking part in Ohef Sholom Temple Youth (OSTY) and NFTY. She is

a madricha every Sunday morning, helping to teach Alef as well as working with students one-on-one. She is in the 10th grade and takes online courses through Indiana University High School and University of Nebraska High School. Katelynn is an adventurer at heart who finds joy in making others smile. She loves reading, writing, traveling, and photography.



### ANDREW NORDLINGER RACHELS

Andrew is the son of John and Allison Rachels, brother of Nancy Elizabeth Rachels and grandson of Alan and Susan Nordlinger and William and Judith Rachels. Andrew is a 4th generation member of Ohef Sholom Temple. He began religious study in the 1st grade. Andrew is involved with the Old Dominion Chapter of BBYO. He attends Cape Henry Collegiate and is a participant in their Global Scholars Program.



### KEANO WISOFF RICH

Keano is the son of Sherri Wisoff and Gerry Rich, stepson of William Boykin, and grandson of Patricia\* and Carl Wisoff and Dora\* and Dave\* Rich. He began religious study in 4th grade and is a 1st generation member of Ohef Sholom Temple. He is currently in 10th grade at the Ocean Lakes Math and Science Academy. Keano became a Bar Mitzvah in October 2014. He is currently interested in biomedical engineering and neural networks.

He works as part of the "Student Help Desk" at his high school to provide tech support for teachers, students, and administrators. He is a member of the OLHS Varsity Tennis Team, and plays piano and violin at home.



### NICHOLAS MATTHEW SABATINO

Nicholas is the son of Steven and Jennifer Sabatino, brother of Madison and Abby Sabatino, and grandson of Jonathan and Ellen Harris, Michael and Celeste Stredler, and Joseph and Barbara Sabatino. He is a 4th generation member of Ohef Sholom Temple. He began his religious study in the 3rd grade. Nicholas is in the 10th grade at Norfolk Academy and is on the football and crew teams.



### ALASTAIR WINSTON STERNS

Alastair is the son of George and Jenny Sterns, brother of Sabrina Sterns. He is a sophomore and an excellent student at Norfolk Academy. He is a three-sport athlete, participating in crew, swim team and football. Alastair is an Eagle Scout and has served in many Boy Scout troop leadership positions including Senior Patrol Leader and currently as a Junior Assistant Scout Master. He enjoys serving as a Madrich at Ohef Sholom

Temple, teaching Hebrew to younger students. Alastair is part of a military family and lives in Portsmouth, Virginia with his younger sister, parents, and three dogs. He has also lived in Honolulu, Hawaii, Annapolis, Maryland, and New Bern, North Carolina. Alastair's summer plans include being a Counselor/Lifeguard at a Boy Scout Camp in Ohio.



### SOPHIE MALKA WALDMAN

Sophie is the daughter of Marnie and Todd Waldman, the sibling of Lucie Waldman, and the granddaughter of Lauren and Howard Kronenberg and Nanci Allen and Richard and Rica Waldman. She is the first-generation at Ohef Sholom Temple and became a Bat Mitzvah in August of 2014. Sophie began Ohef Sholom in kindergarten. Currently, she is a Social Action Vice President for OSTY; a madricha for Bet Hebrew, and part

of the Better Together program, which is a program where Jewish teens socialize with Jewish elders from Beth Shalom Village. She is a sophomore at Virginia Beach Friends School, a small Quaker school. Sophie is the class president at school and serves as a Quaker Youth Leader.

## Donor: Roy & Lorie Beskin

Roy and Lorie Beskin, parents of Courtney Beskin Epps & Randi Beskin Smith, have just made a Life & Legacy gift in honor of their 5 grandchildren.



Here is Roy in his own words:

*I'm very proud that my grandchildren are 6<sup>th</sup> generation Ohef Sholom Temple members. While my family comes from*

*Eastern European rabbis, it seems like only my Aunt Rita Cogan stayed in the 'Temple biz'; she was the office administrator for Ohef Sholom Temple for a quarter century and she loved every minute of it.*

*I feel very lucky that I was born a 20<sup>th</sup> century American Jew. I couldn't have been born in a better land or time. I have always felt special about being one of the "chosen ones."*

*As a young man sitting in the sanctuary on the High Holy Days, I remember watching the "pillars" of the Jewish community lead our Temple. I knew they gave of themselves in two ways: time and money. So over the years I have given some time (working in the Sunday school Office/teaching Sunday School/being on the Temple Board, etc.) and money (giving small and large gifts over the years). It's the very least I could do in return for my good circumstances.*

*When I was younger, I felt bad about not having the wherewithal to give back as much as I wanted to. What I know now is that I should have accepted that it was ok to do what I could do. That's a message I would want to convey to young people: don't feel bad about what you cannot give; just give what you can to help others and feel good about that.*

*Working builds character; character leads to doing the right thing for others. I have always worked, first doing paper routes, then at my Dad's tile company, loading trucks as a 14 year old helper. It must have filtered down to my kids, who started working selling ice cream cones on the Boardwalk while in high school. I remember as a Temple youth going door-to-door for UNICEF; since I was working myself, I could contribute as well. Helping others early in life builds character; giving over a lifetime builds a better community.*

*My mother Jane Beskin (of blessed memory) never met a "drive" she didn't contribute to: Cancer Fund, Muscular Dystrophy, the United Way, Alzheimer's/ Girls Scouts/PTA, to name a few. I have just been trying to follow her lead ever since, and I hope my kids will follow mine.*

*I am proud that our family has left its mark here, and that our insurance business (Beskin-DiversInsurance Group) is well known in the area. My brother Rick and I are just a couple of good ole' boys from Wards Corner who worked hard, tried to do some good, and found some success.*

*I want my grandchildren to walk by the Eternal Life Plaques and see their names. I want them to know that this Temple didn't get built by itself. It takes a lot of people who give – both their time and their money to keep it going. My hope is that seeing their names on the plaque inspires them and others to get into the "giving game." **It doesn't matter if you give a lot or a little. Just give what you can. Get in the game. Feel good about what you can do, not guilty about what you cannot.***



## NEW ENDOWMENT GIFTS

Noel & Barbara Dudley  
The Fine Family Fund

Ross & Mandi Firoved  
Michael Jaffe

Emerson & Everleigh Epps,  
Lennon, Lily & Logan Smith

Ira & Jean Steingold

Life & Legacy is a partnership with the Harold Grinspoon Foundation that assists Jewish communities across North America to promote legacy endowment gifts. For the next two years, for every 18 new legacy commitments made, we will receive \$7,500 in addition to the impact that these commitments will make on securing our future.

To date we have 6 new gifts. We need 12 more. Can we count on you?

For more information on HOW YOU CAN MAKE A DIFFERENCE, contact Matthew Fine, OSF Director and Life & Legacy Team Leader, at [matthewfine@cox.net](mailto:matthewfine@cox.net) or Linda Peck at [linda@ohesholom.org](mailto:linda@ohesholom.org).



## Rabbi Roz Representing OST in the Community



In a time where division seems more common than unity, Rabbi Roz and clergy from 3 other congregations demonstrated on February 20 that there is much more that brings us together than divides us. The Center for the Study of Religious Freedom and the NEXUS Interfaith Dialogue at Virginia Wesleyan University hosted a panel discussion on "Faith and the Environment" with 4 different theological perspectives on the importance of environmental stewardship. Local WHRV radio host Cathy Lewis kept the conversation full of good humor. The panelists were eager to learn from one another, and shared their insights and interpretations of their holy scriptures and how religion has a role to play in keeping our physical environment, Creation, in good health.

Ohef Sholom Temple also participated in the second panel discussion this series, a program on what actions and initiatives are being taken by Pearl Faith Communities (faith organizations like OST and connected to Lynnhaven River NOW) on April 24.

**Saving Money  
+  
Protecting Creation  
= A Good Deal for All of Us!**

It is surprising, but YES - making choices to use more energy-efficient

products in your home is actually **LESS EXPENSIVE** than purchasing old light bulbs and appliances, and will cost you less on your electric and water bills.

Join the Eco-Judaism Subcommittee on **Sunday, May 21 at 10:30 am** at Ohef Sholom Temple for a workshop on **Saving Money By Going Green in Your Home**. You will learn very practical tips that can translate into an immediate impact on your pocketbook. This program is one of the necessary steps for Ohef Sholom Temple to be nationally recognized by the Green Faith Energy Shield Program.

Our Temple building is undergoing a major shift to more energy efficient lighting that brings our Temple budget significant savings



and lowers our carbon footprint. Recently Kaufman Hall completely changed over to LED lighting. Making this change means that our congregation no longer bears the extraordinary cost of renting machinery just to change out those old, inefficient light bulbs. The new bulbs are much less expensive, and only have to be changed once every few years. A plan is in place to make the same change to Sinai Chapel.

Upcoming Dates:

**Sunday, May 21, 10:30 am – 12 pm:** Saving Money By Going Green in Your Home workshop.

**Saturday, June 10, 12 pm:** After enjoying Shabbat Services, the Eco-Judaism Subcommittee will host a planting of the native plant garden on Redgate Avenue. We also plan to install a solar-powered water feature as a water source for wild animals, rain barrels to provide an easier and renewable source of water for the plants, and more bat boxes on the property. Save the date and plan to join us for meaningful fun and fellowship!

**Alyssa Muhlendorf**  
Eco-Judaism Chair

## Save Energy Save Money Save The Earth



**Sunday, May 21  
at 10:30 am, Kaufman Hall**

It is surprising, but YES making choices to use more energy efficient products in your home is actually **LESS EXPENSIVE** than purchasing old light bulbs and appliances, and will cost you less on your electric and water bills.

Join the Eco-Judaism Subcommittee at Ohef Sholom Temple to learn very practical tips that can translate into an immediate impact on your pocket book. This program is one of the steps for Ohef Sholom Temple to be nationally recognized by the Green Faith Energy Shield Program.

Please email [reservations@ohelsholom.org](mailto:reservations@ohelsholom.org) or call the temple office if you plan to attend.

# SISTERHOOD

It has been an honor and privilege to serve as Sisterhood Co-Presidents for the past two years. Sisterhood's mission is to foster the highest ideals of Judaism, to promote closer community among its members, and to further the religious, social and educational activities of Ohef Sholom Temple.

Our members have prepared Onegs, and ensured that we have flowers on the Bimah for Shabbat every Friday night. We have as a group cooked casseroles to support the ForKids Hot Meals and Homework project. We raised money for OSTY and provided both lunch and a bagel breakfast for NFTY TheVent. And the list goes on and on. Sisterhood is committed to 19-plus different events, many of them occurring and recurring throughout the year.

There is joy in the companionship of other women as we work on projects. The opportunity to perform a Mitzvah and meet members is priceless.

Many changes have occurred at OST over the past two years.

Now Sisterhood is researching and reviewing how we

want and need to change to be compatible with Temple goals and to meet the needs of Jewish women at Ohef Sholom.

It is with a sense of pride that we turn this organization over to the capable hands of the new Sisterhood officers who will be installed May 16, 2017. We both look forward to stepping into other roles in Sisterhood and at Ohef Sholom.

Yours in Sisterhood,

**Margaret Sawyer**

Sisterhood Co-President 2015-2017

**Nichole Kushner**

Sisterhood Co-President 2015-2017



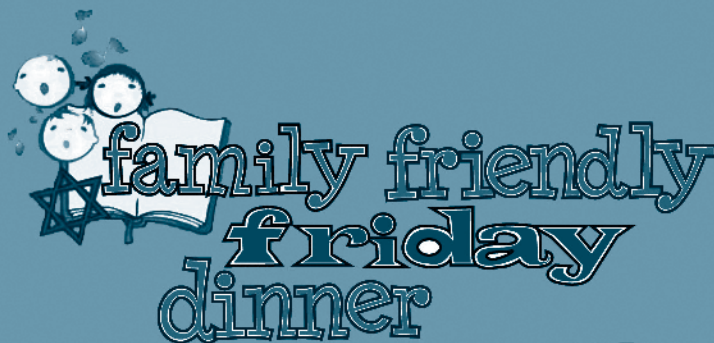
## UPCOMING FAMILY-FRIENDLY EVENTS



**May 7 • 11:00 am**



**May 12 • 5:45 pm**



**May 12**

**Service 5:45 pm  
Dinner 6:30 p.m.**

\$10 per person  
13 & under free  
Menu to come

Join us for  
a brief Shabbat Service with  
lively songs & a story led by Rabbi Roz  
& Cantor Wally.

Designed especially for families with infants  
through middle schooler, it is held right before  
Shabbat dinner, which begins at 6:30 pm.

Stay for Shabbat dinner (kids under 13 eat free!),  
and the little ones can enjoy a craft when  
they've finished eating.

To RSVP and for more information, visit [www.ohefsholom.org](http://www.ohefsholom.org) and click on  
the "Family Friendly Friday Dinner" Quicklink or call 757-625-4295.



## MAY BIRTHDAYS

### May 1

Bonnie S. Brand  
Edward A. Kramer  
Matthew Tonelson  
Lawrence L. Steingold  
Romy Radin Armentrout  
Mark Snyder

### May 2

Leonard Smith  
Gwen Gilbert  
Theodore Adler  
Jack L. Siegel

### May 3

Adam Lotkin  
Diane Aftel  
Shaye Arluk  
Clay H. Barr

### May 4

Judith Hurwitz  
Terri Feldman  
Sidney Rosenbaum  
Leah K. Wolsh

### May 5

Laura Soblotne Makela

### May 6

Wendy Jaffe  
Robert E. Brown  
Richard B. Emanuel  
Steve Pano

### May 7

Drew Gebler  
Benjamin C. Altschul

### May 8

Mark Hecht  
Ethel-Raye Greenspan  
Shannon Dupre

### May 9

Gerald Pributsky  
Karen G. Jaffe  
Howard L. Kesser  
Tammy Schachet-Briskin  
Paul Seeman  
James Douglass

### May 10

Lisa Schlichtig  
Dixie Wolf  
Richard G. Levin

### May 11

Rickie L. Kyle  
Robert B. Laibstain  
Gerald M. Bazar

### May 12

Janet Kanter  
Marcia S. Schwan  
Thomas E. Snyder

### May 13

Steven Halpern

### May 14

Lawrence Colen  
Martin S. Glaser  
Joan G. Miller  
William A. Sawyer  
Janet S. Pitler

### May 15

John M. Cooper  
Leah Rishona Blachman  
Carol Rosenblatt

### May 16

Jeffrey M. Laibstain  
Nancy Lazier  
Jeanne Miller  
Arless O. Kastner

### May 17

Cynthia Galumbeck  
Diana Lisner  
Phyllis G. Pollack

### May 18

Lisa Cohn  
Michael Haywood  
Barbara Wachtel Henry  
Steven L. Perlman

### May 19

Julie Byers  
Lawrence Kurtz  
Arlene E. Zeno  
Gail W. Bachman

### May 20

Robert Byers  
Lisa Cohen  
Penny Frumkin  
Ari Zito  
Harriet Ann McCullough  
Jeffrey Berkowitz

### May 21

Terri Sarfan  
Ryan Rollo  
Laura Gilbert  
Jay F. Wilks  
Harry Graber

### May 22

Marilyn G. Johns  
Edward J. Soltz

### May 23

Ron Dyer  
Bunny Mirman  
Landon Browning  
Adrienne Joy Spigel

### May 24

Amber Inwood  
David Kushner  
Laurie Weckstein

Amy Weinstein  
Seymour M. Teach

### May 25

Elisa S. Banks

### May 26

Charlotte C. Corey  
Stanley Sacks

### May 27

Joan Dalis

### May 28

Marcia G. Snyder

### May 29

Jonathan W. Priest  
Robert Abram Michalove  
Jerome Miller  
Steven S. Snyder

### May 30

Barbara S. Hearst  
Harriet R. Goodove

### May 31

Heather Vodila  
Gema Shanker

## MAY YAHREZITS

### April 30 - May 6

Sophia S. Albert  
Ida Albinder  
Annie F. Baydush\*  
Sidney Berg  
Harry Berk  
Sol Berman  
Charlie A. Bland  
Rose Bloom\*  
Elizabeth Bress  
Julia Chanin\*  
Harold Cinamon  
Fanny Cohen  
Ronald Donn\*  
Lillian Judith Egermann  
William Einhorn  
A. Luie Fass\*  
Myron J. Fink  
Lawrence S. Fisher  
Hyman A. Goldberg\*  
Anetha Gordon\*  
Douglas Gordon\*  
Lila Green  
Shirley Green  
Stanley Samuel Gross\*  
Rose Ann Leventhal  
Grossman  
Barbara Hallar  
Barbara Halpern  
Mary Nelle Hankins  
Frederick Herman  
Milton Kaplan  
Sandra Kaplan  
Sidney Leon Katz  
Max L. Kayer  
Mary Kerner  
Joseph Lazier  
Marjorie MacAdams  
Herbert Mann  
Nathan Metzger\*  
Rose K. Nordlinger\*  
Alan L. Nordlinger, Sr.\*  
Nathan L. Rosenberg\*

Jane Sagen  
Freda Salsbury  
Schwartz  
Paul R. Shaw  
David William  
Silverstein  
Dorothy H. Stein\*  
Sidney Steinberg  
Sally Taubman  
Dr. Harvey Waldholtz  
Edward E. Waxman\*  
Stephen Yellin  
Rena Cooper Zittrain\*

### May 7 - 13

Henry I. Adler\*  
Marvin Adler\*  
Sylvan Altschul\*  
Nona L. Bernatz  
Morris J. Blachman  
Jane Braudrick  
Dorothy H. Cohen\*  
Louis C. Cohen\*  
Eugene Warren Davis  
Doris Van Os Dreyfus\*  
Ida B. Ellman  
Robert M. Epstein\*  
Lillian N. Feurstein  
Morris Friedman  
Morris Gewirz\*  
Regina Glaser\*  
Elisha Goldfarb  
Esther Greenstein  
Rose Gutterman  
Beverly Hainer\*  
Irwin Heller  
Ruth Higgins  
Arthur H. Horwitz  
Jack Hyman  
Joseph Jacobs\*  
Charles D. Kanter  
Simon Kirsner\*  
Adele Kramer  
Vera Markovitz  
Harry Mickelburg

Saul Nadler  
Bertram S. Nusbaum,  
Sr.\*  
Abraham Perlman  
William Raymond\*  
Lenora Fox Rosenberg  
Jack M. Saks  
Milton Schepper  
Jacob Schwan\*  
Marissa Seldes  
Ethel Goodman Siegel\*  
Maurice Smith  
Gary L. Snyder\*  
Herbert L. Stern\*  
Jennie L. Sternman  
Jessie Mitnick Stredler  
Linda C. Sukoff\*  
Eva Sward  
Robert Thomas  
Sylvia Troy  
Sara Swersky Tuckman\*  
Jean Unger\*  
Charlotte P. Wachtel  
Ronald M. Waters

### May 14 - 20

Benjamin Altschul\*  
Celia C. Altschul\*  
Faye Bass\*  
Elliot Bernstein\*  
Dora Coleman  
Sam Cooperman  
Betty Van Os Crockin\*  
Charles Darley  
Freda Fleder Donn\*  
Marion Dreyfus Embree  
Mickey B. Frank\*  
William Gelb  
Betty Goode  
Beatrice S. Grossman  
Carrie Harris  
Mollie L. Heller\*  
Alfred Kern\*  
Fred Koster\*  
Morris S. Lazaron, Jr.

Dr. Max Leva  
Bert B. Livingston  
Mary B. Longman\*  
Beatrice Muhlendorf  
Janice Newton  
Hyman Rivin  
Tom Roper  
Felix Rosenbach  
Harry Rubin\*  
David Schub  
Dr. Arnold Jay Schwartz  
Arthur Spensky  
Bernard Stark  
Bernard Steinberg  
Millie Wall  
Lewis C. Weiss  
Benjamin Whitlock\*  
Pauline Tavss Zfass

### May 21 - 27

Duane Aikman  
Wilma S. Alexander  
Raleigh Anglen  
Alice Aranyi\*  
Dena A. Barr\*  
Morris Beloff  
Kenneth Berk\*  
Leonard Berman\*  
Ivan Bodner\*  
Dorothy Bonk  
Roslyn G. Brown  
Irving Cohen\*  
Marie Dailey  
Vivienne Beckerman  
Darrow  
Joseph Lee Frieden\*  
Benjamin M.  
Ganderson  
Celia Frenkil Glasser\*  
Jessica R. Glasser\*  
J. Samuel Goldback\*  
Barton Goldberg  
Mary Miriam Goldberg\*  
Janet Goldstein  
Samuel Goldstein

Sol Gutterman  
Earle J. Kerpelman  
Michelle Kohn-Smith  
Joseph D. Kress  
David Laibstain  
Zelda Leibowitz  
Harold Allen Lerner  
Birdye G. Leterman\*  
Mollie Liebman\*  
Herman Lobock  
Bert Rial Markman\*  
Bruce Moses  
Harold Moses  
Jacob Ostroff  
J.W. Perkins  
Ruth Posner  
Larry Rapoport  
Pauline Ries\*  
Samuel W. Robbins\*  
Benjamin F. Robinson  
Rachel J. Salomonsky\*  
Lydia Shipman  
Esther R. Simon\*  
Kate Cohen Snyder\*  
Jacob Soble  
David Sommers\*  
Frances Stadlin  
Ellis J. Strelitz\*  
Leonard Strelitz  
Lee Sussman  
Max Ungar  
Irwin S. Van Os\*  
Peter Walker  
Meyer Weisberg  
David Woolard

### May 28 - June 3

Flora Albert  
Frieda Berman  
Amelson\*  
Bertha M. Aronson\*  
Dr. Richard Bartley\*  
Jerry Baydush\*  
Harold I. Breit\*  
Israel L. Brenner

Abraham Bress  
Lewis Alfred Bress  
Rachel Brown\*  
Seymour Chapel  
Sara Joo Davidson\*  
Jennie Lohrman  
Dobbs\*  
Abraham Donn\*  
Sarah Feldman  
Charles Joseph Foster V  
Steven Friedman  
Ruth Basch Front  
Marion Glazer  
Lavada Goldberg\*  
Kate Goldstein  
Sylvia Greenspoon  
Clara G. Harris\*  
Donald Higgins  
Edwin "Buddy"  
Jacobson\*  
Felmore Jacobson  
Bernard Jaffe  
Solomon Kaplan  
Sarah Kayton\*  
Reba M. Leterman\*  
Agatha L. Leventhal\*  
Seymour (Buddy)  
Levinson\*  
Sonya Levy  
Anna Lee Liverman\*  
Jacob Markovitz  
Maurice J. Miller\*  
Harry Nicholson\*  
Minna Nordlinger\*  
Bertha Reisner  
Doris Roth  
Roberta Schiff  
Rose Silvertown  
Brian Simon  
Harriet Solomon  
William Waldman\*  
Julia Weisel\*  
Belle V. Weiss  
Shirley Ann Yusuf

\* denotes memorial plaque

# HIGHLIGHTED EVENTS

For more details on OST events please visit: [www.ohefsholom.org](http://www.ohefsholom.org) or find us on Facebook

**May 2**  
7:00 pm



## Cafe Ivrit

Adult Ed is hosting a meet-up to help our congregants practice their Hebrew using different types of media.

To RSVP, email the Temple at [reservations@ohefsholom.org](mailto:reservations@ohefsholom.org) or call 757-625-4295.

**May 2**  
5:30 pm



## Chanting Group

Join Rabbi Roz as we engage in this ancient spiritual practice. There will be a brief teaching, chanting of our sacred texts, and time for reflection.

Please RSVP [reservations@ohefsholom.org](mailto:reservations@ohefsholom.org).

**May 7 & 21**  
8:45 am



## Adult Yoga

De-Stress & Move Towards Shalem, Hebrew for Wholeness & Healing

Come join our Certified Instructor Cathy Romash in Room 202.

*No experience necessary.*

**May 7**  
2:00 pm



## Ramblin' at OST Folk Music Coffeehouse

Please join us for coffee and folk music with Bob Zentz and special guests. You are welcome to bring your acoustic instruments for a jam session.

**May 17**  
10:30 am



## OST Group to attend VFA Coffee Concert

Join us for the Virginia Fine Arts Festival Coffee Concert II at the Robin Hixon Theater, followed by lunch nearby.

Please RSVP [reservations@ohefsholom.org](mailto:reservations@ohefsholom.org).

**May 18**  
6:30 pm



## Annual Congregational Meeting & Reception

Please join us for a reception at 6:30 pm and a meeting at 7:00 pm. Karen Fine will be installed as our new president along with the new Directors & Board members.

Please RSVP [reservations@ohefsholom.org](mailto:reservations@ohefsholom.org).

**May 19**  
7:45 pm



## Prime Time Dinner

Join OST's Prime Time after Shabbat Services for dinner at Pasha Mezze, 340 W 22nd St, Norfolk. Open to all OST congregants. Cost: price of meal

Please RSVP by Wednesday, May 17 to: Shelley Stephens, DCL at [shelley@ohefsholom.org](mailto:shelley@ohefsholom.org)

**May 21**  
11:00 am



## Chai Mitzvah

Chai Mitzvah is a nationally recognized, individualized, framework for deepening your engagement with Judaism and our community.

For more information, contact Kitty Wolf at [kitty@ohefsholom.org](mailto:kitty@ohefsholom.org).

**May 24**  
8:30 am



## At the National Museum of Art with the Kaufmans

Linda Kaufman and son Ted Kaufman for a guided tour of the Kaufman Collection to include lunch and a short film.

For more information and to RSVP, contact Shelley Stephens at 757-625-4295 ext.110 or [shelley@ohefsholom.org](mailto:shelley@ohefsholom.org).



# MAY 2017

SUN.	MON.	TUES.	WED.	THUR.	FRI.	SAT.
	1	2 <b>4:00 pm</b> House Committee Mtg <b>6:00 pm</b> Dues Committee Mtg, Confirmation Rehearsal, Torah Study <b>7:00 pm</b> Cafe Ivrit	3 <b>1:00 pm</b> Development Committee Mtg <b>6:00 pm</b> Men's Club Mtg	4	5 <b>5:30 pm</b> Chanting Group <b>6:30 pm</b> Shabbat Services with Kurt Rosenbach Award to Barbara Dudley	6 <b>9:00 am</b> Torah Study <b>10:30 am</b> Bat Mitzvah of Madison Longwater
7 <b>8:45 am</b> Adult Yoga, Sunday Learning <b>10:00 am</b> Confirmation Class Rehearsal <b>11:00 am</b> Wiggles & Giggles <b>12:30 pm</b> Better Together Lunch & Learn <b>2:00 pm</b> Ramblin' at OST Folk Music Coffeehouse	8	9 <b>6:00 pm</b> Confirmation Rehearsal, Torah Study	10	11 <b>10:00 am</b> Quilting Group <b>3:00 pm</b> Executive Committee Mtg	12 <b>5:45 pm</b> Family Friendly Friday Services to Honor Faculty <b>6:30 pm</b> Shabbat Dinner <b>7:30 pm</b> Shabbat Services	13 <b>9:00 am</b> Torah Study <b>10:30 am</b> Learner's Service, Shabbat Services
14 Mother's Day	15	16 <b>10:00 am</b> Quilting Group <b>6:00 pm</b> Confirmation Rehearsal, Sisterhood Installment & Annual Mtg, Torah Study	17 <b>9:00 am</b> Life & Legacy Mtg <b>10:30 am</b> Virginia Fine Arts Festival Coffee Concert Trip <b>2:00 pm</b> Special Needs & Security Committee Mtg	18 <b>8:00 am</b> Walking Group <b>6:30 pm</b> Annual Congregational Mtg Reception <b>7:00 pm</b> Annual Congregational Mtg	19 <b>6:30 pm</b> Shabbat Services <b>7:45 pm</b> Prime Time Dinner (offsite)	20 <b>9:00 am</b> Torah Study <b>10:30 am</b> Confirmation Services
21 <b>10:30 am</b> Eco-Judaism Presentation on Decreasing your Home Energy Costs <b>8:00 am</b> Walking Group <b>8:45 am</b> Adult Yoga, Last Day of Sunday Learning <b>11:00 am</b> Chai Mitzvah	22	23 <b>6:00 pm</b> Torah Study	24 <b>8:30 am</b> At the National Museum of Art with the Kaufmans	25 <b>10:00 am</b> Quilting Group <b>3:30 pm</b> OS Foundation Mtg	26 <b>6:30 pm</b> Shabbat Services & Oneg Honoring Cantor Wally	27 <b>9:00 am</b> Torah Study <b>10:30 am</b> B'nai Mitzvah of Jacob Shanker & Isabella Velez
28	29 Office Closed - Memorial Day <b>9:30 am</b> Soup Kitchen	30 <b>6:00 pm</b> Torah Study	31			

IF YOU'D LIKE TO ADD AN EVENT TO THE TEMPLE CALENDAR, PLEASE EMAIL [RESERVATIONS@OHEFSHOLOM.ORG](mailto:RESERVATIONS@OHEFSHOLOM.ORG).

## GOING DIGITAL

Help us GO GREEN and save some trees! In an effort to decrease our carbon footprint and make information more easily accessible, the Bulletin is going digital.

If you would like to get your Bulletin electronically, please call the office at 757-625-4925 or send an email to [reservations@ohesholom.org](mailto:reservations@ohesholom.org).



530 Raleigh Avenue, Norfolk, VA 23507

757-625-4295 757-625-3762 (Fax)

[www.ohelsholom.org](http://www.ohelsholom.org)

Rosalin Mandelberg, Senior Rabbi  
Wally Schachet-Briskin, Cantor  
Deborah Bodin Cohen, Interim Associate Rabbi  
Lawrence A. Forman, *Rabbi Emeritus*

Non-Profit Org.

US Postage

**PAID**

Norfolk, VA

Permit No. 230

### Officers

Edward G. Kaufman	<b>President</b>
Karen J. Fine	<b>First Vice-President</b>
James Schloss	<b>Second Vice-President</b>
Sandy Forte-Nickenig	<b>Secretary</b>
Erik S. Cooper	<b>Treasurer</b>

### Board of Directors

John Cooper	Dr. David Metzger
Barbara Dudley	Alyssa Muhlendorf
Mandi Firoved	Dr. Bert Newfield
Tammi Foer	Sharon Nusbaum
Andrew Fox	Dr. Abbey Pachter
Celia Friedman	Rick Rivin
Mark Friedman	Nicole Rosenblum
Mark Hecht	Paula Russel
David Hirschler	Margaret Sawyer
Michael Jaffe	Joashua Schulman
Bonnie Kerner	Ira Steingold
David Kushner	Todd Waldman
Robert Liverman	Kenny Weinstein
Robin Mancoll	Gail Wolpin

**OST Sisterhood WRJ/Co-Presidents**  
Nichole Kushner & Margaret Sawyer

**Men's Club President**  
Matthew Weinstein

### Past Presidents

Minette Cooper	Charles S. Nusbaum
Kim Simon Fink	Robert C. Nusbaum
Linda Fox-Jarvis	William L. Nusbaum
Robert C. Goodman, Jr.	Harry Pincus, Jr.
Steven Kayer	Kurt M. Rosenbach
Dr. Howard Kesser	Dr. Robert M. Rubin
Edward A. Kramer	Henry M. Schwan
Cathi M. Laderberg	Linda Spindel
Natalie G. Levinson	Alan D. Stein

### Honorary Directors

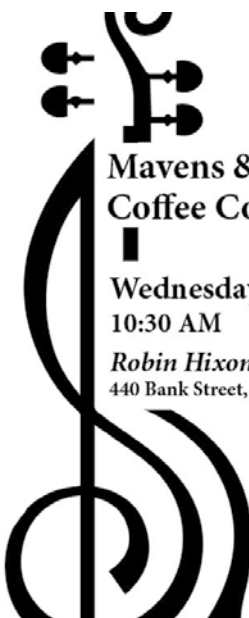
Thomas Bachman	Steve Kocen
Terri Budman	Jay Legum
Allan Donn	Dr. Rachelle Luna
Morris Fine	Alex Pincus
Sandra Forte-Nickenig	Dr. Meredith Rose
Jay M. Friedman	June Saks
Leslie Friedman	Miriam Seeherman
Joan Harrison	The Honorable Louis Sherman
Nancy Hirschler	Louis D. Snyder
Edward G. Kaufman	Alan Troy
Andrew C. Kline	Stanley Waranch



**WEDNESDAY, MAY 24, 2017 8:30 AM**

Please join us for a once in a lifetime tip to the National Museum of Art with Linda Kaufman and son Ted Kaufman for a guided tour of the Kaufman Collection to include lunch and a short film. Tour leaves from OST promptly at 8:30 am and will return tentatively at 7:30 pm.

For more information and to make a reservation, contact Shelley Stephens at 757-625-4295 ext.110 or [shelley@ohelsholom.org](mailto:shelley@ohelsholom.org).



## Mavens & Mensches to attend Virginia Arts Festival Coffee Concert

**Wednesday, May 17  
10:30 AM**

**Robin Hixon Theater**  
440 Bank Street, Norfolk

### Featuring:

Jinjoo Cho, Violin  
Eric Wong, Violin  
Fitz Gary, Viola  
Madeline Fayette, Cello

followed by lunch nearby  
Cost: \$18 (plus the cost of lunch)

To RSVP and for more information,  
call the Temple Office at 757-625-4295 or email [reservations@ohelsholom.org](mailto:reservations@ohelsholom.org).

