

# THE TEMPLE POST



The Ohef Sholom Temple Monthly News Publication

Volume 54, Issue 3

Established 1844

December 2013

## MISSION STATEMENT:

"My House Shall be Called a House of Prayer For All Peoples"

To provide a spiritual, cultural and educational environment inspired by the highest Reform Jewish values.

## What's Inside:

Clergy Corner .....	2
Worship .....	3
Condolences & Congratulations .....	3
President's Report .....	4
Religious School .....	5
Kids & Kiddush .....	5
Adult Learning .....	6
Ohef Sholom Foundation .....	8-9
Men's Club .....	10
MSOC .....	10
Special Needs & Security Committee .....	10
Sisterhood .....	11
Birthdays & Yahrzeits .....	12
Caring Committee .....	13
Calendar .....	15
OST Archives .....	15

## Thank You, Kurt Rosenbach!

For over 60 years Kurt Rosenbach has tirelessly given his time and love to Ohef Sholom Temple. In addition, for over 10 years he's been the force behind the Ohef Sholom Foundation, whose purpose is to create an endowment which will subsidize dues and fundraisers, thus keeping the Temple on sound financial footing for years to come.

Now Kurt has decided to step down as President of the Ohef Sholom Foundation and pass the reins to Robert C. Goodman. In honor of Kurt's dedicated service and commitment, we have formed "Kurt's Club," a special endowment fund within the Ohef Sholom Foundation. Donations of any amount can be made to Kurt's Club, so there are no financial barriers to being part of our endowment campaign. And you can honor Kurt at the same time! To learn more about Kurt and Kurt's Club read Linda Fox-Jarvis' article on page 2.

Also SAVE THE DATE for **Friday, April 4, 2014**, when we will honor Kurt Rosenbach at a special Shabbat service.



Kurt Rosenbach

## DR. GARY ZOLA SPEAKS DURING THE 2013 OST MARVIN & LILLIAN DAVIS SCHOLAR-IN-RESIDENCE WEEKEND



## OHEF SHOLOM TEMPLE

530 Raleigh Avenue  
Norfolk, VA 23507  
Phone: (757) 625-4295  
Fax: (757) 625-3762  
www.ohefsholom.org

## CLERGY CORNER

### CLERGY

#### Rabbi

Rosalin Mandelberg  
rabbi@ohefsholom.org

#### Cantor

Wally Schachet-Briskin  
cantorwally@ohefsholom.org

#### Rabbi Emeritus Ohef Sholom

Lawrence Forman  
rabbiforman@ohefsholom.org

#### Rabbi Emeritus Temple Sinai

Arthur Z. Steinberg  
rabbisteinberg@ohefsholom.org

### STAFF

#### Temple Administrator

Gail W. Bachman  
gail@ohefsholom.org

#### Director of Congregational Life (DCL)

Linda Peck  
linda@ohefsholom.org

#### Music Director

Charles Woodward  
chuck@ohefsholom.org

#### Temple Educator

Kitty Wolf  
kitty@ohefsholom.org

#### Administrative Assistant

Sara Bachman  
sara@ohefsholom.org

#### Financial Assistant

Kari Amual  
kari@ohefsholom.org

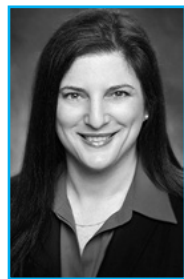
#### Graphic Designer

Kristine Wayman  
kristine@ohefsholom.org

### LAY LEADER

#### President

Linda Fox-Jarvis  
president@ohefsholom.org



### A Word from the Rabbi

#### A New Year's Resolution That Will Last

'Tis the time of the year for making "resolutions." So I'd like to propose a few fill-in-the-blank questions for each of us to consider before we make the same old, same old promises to lose weight, quit smoking, drink less and exercise more . . . My reasoning? When our spiritual lives are in order, mental and physical health often follow suit.

So answer for yourself:

I want to tell you about what I consider to be really important . . .

The most valuable lesson I inherited from my family is . . .

My own life has taught me . . .

For me, true (spiritual) fulfillment comes from . . .

Judaism is precious to me because . . .

For me being a part of the Jewish people is . . .

Once you determine your answers to these questions, ask yourself whether or not your life allows you to live according to what is really important to you, to the values you inherited and those of your own life experience. Are you doing that which is paramount and fulfilling for you? Are you devoting enough time to the life of the spirit, to that in Judaism which grounds and guides you, to the community and people of which you are a part?

I'd like to suggest a way, with our help, for you to lead a more fulfilling and spiritually nourishing life -- a more religious life. I'd like for you to consider becoming an Adult Bar or Bat Mitzvah. On **Tuesday, January 7th, from 6 - 7 p.m.**, join us as we begin a year-and-a-half journey that might transform your life, but that certainly will redirect it to be more soulful and nourishing, more meaningful and sustaining. By immersing ourselves in our tradition, exploring its texts, plumbing the depths of our history and thought, and learning Hebrew, -- we will work to develop our lives as Jews and human beings, acquire Jewish knowledge, engage in emotional and passionate Jewish experiences and enact the nuts and bolts of ritual observance.

Cantor Wally, Rabbi Steinberg and I will be with you every step of the way, sharing in your exploration and epiphanies and guiding you toward your Adult B'nai Mitzvah service in the Spring, 2015. If you've always wanted to do this, now is the time. We read in *Pirkei Avot*, *The Ethics of our Fathers*, 2:5: Do not say, "when I have free time I will learn," lest you never have free time. This is a resolution you can make now and which will enrich you for the rest of your life.

To r.s.v.p. for the program or if you have questions, please e-mail sara@ohefsholom.org.

Marty and I wish for you that your New Year be filled with everyone and everything that is important to you. And may you and those you love be blessed with health, wholeness and peace,

*Rabbi Roz*

## CONGRATULATIONS

**Congratulations to Jonathan & Dale Jacobs** on the birth of their granddaughter, Luna Bianca Jacobs. Proud parents are Dr. Jordan Michael-Sean Jacobs and Maria Duenas Jacobs of New York City.

**Congratulations to David and Nancy Embree** on the birth of their grandson Easton Leo. Proud parents are Brad & Alyssa Embree.

**Congratulations to Sandy Forte and Pete Nickenig** on the birth of their granddaughter Mary Margaret Baird.

**Congratulations to Randi and Colby Smith** on the birth of their daughter Lennon Hope. Her grandparents are Roy & Lorie Beskin, Cherylynn Sagester, and Kelly & Roger Smith.

**Congratulations to Josh Bennet and Tonya Gifford** on their marriage November 23. Josh is the son of Neil and Pat Bennet.

*\*of blessed memory*

## CONDOLENCES

*Ohel Sholom remembers with deepest affection the following beloved family members and friends:*

**Kristine Wayman**, on the loss of her grandmother, *Helen Mugovero*.

**Sharon Ross**, on the loss of her mother, *Patricia Alwood*.

**Martin Salasky**, on the loss of his mother, *Evelyn Salasky*.

**The Naftaly family**, on the loss of *Irving Naftaly*, former president of Temple Sinai.

# Congratulations to Leslie Legum

The OST monthly bulletin will no longer be nameless! This month we are proud to introduce the **Temple POST**.

Thanks to Leslie for naming our bulletin! She will receive a \$36 Amazon gift card.

## Did you know...

You can get the *Jewish News* for free by calling 965-6100? You can also get it online by visiting:  
[www.jewishva.org](http://www.jewishva.org)

- Click on the far right tab "News"
- Select "Jewish News"



## WORSHIP

### Torah Portions for December

**December 6 Tevet 3**  
**Shabbat Services - 6:30 p.m.**  
Parasha: Vayigash  
Genesis 44:18-47:27  
Haftarah: Ezekiel 37:15-28

**December 13 Tevet 10**  
**Shabbat Services - 6:30 p.m.**  
Parasha: Va-y'chi  
Genesis 47:28-50:26  
Haftarah: I Kings 2:1-12

**December 20 Tevet 17**  
**Shabbat Services - 6:30 p.m.**  
Parasha: Sh'mot  
Exodus 1:1-6:1  
Haftarah: Jeremiah 1:1-2:3

**December 27 Tevet 24**  
**Shabbat Services - 6:30 p.m.**  
Parasha: Va-eira  
Exodus 6:2-9:35  
Haftarah: Isaiah 66:1-13, 23

**Braille prayerbooks, as well as headsets for those in need of audio assistance at services, are available upon request.**

### REMINDER

Submissions for the **February** bulletin must be received by **January 1**

## A WORD FROM THE PRESIDENT



The Ohef Sholom Foundation has been driven by the amazing Kurt Rosenbach over the last 10+ years. Kurt has given much time and passion to creating an endowment and legacy for OST's generations to come. Since the inception of the Eternal Light Society just a couple of years ago, we have raised over \$10 million dollars in donations, testamentary and insurance policies, which include the addition of the Temple Sinai

endowment. Kurt and the Foundation Board would like to see us make our goal of \$14 million before the fiscal year is over, and I would love to see that happen as well. (Kurt also pointed out to me the other day that we definitely have the potential to do even more.)

In my opinion, and with my past fundraising experience, I feel that in order to achieve our goal, we must all take ownership of the cause. That is easier said than done. We all have our own individual charities and causes, and there is no shortage of them. So, in an effort to help you take ownership of the Eternal Light Society Campaign and make it a priority in your life, I ask each of you to *IMAGINE* – *Imagine* an Ohef Sholom Temple budget where we did not have an annual fundraiser as an “income” line item. Instead, it was only a fun, social event for the Temple. *Imagine* an OST budget that did not have the requirement to have the biennial directory be an “income” line item. Instead, it would just be a directory to serve our congregation with information. And *imagine* an Ohef Sholom Temple where the membership commitment is based on what each individual is willing and able to pay rather than “setting minimum dues.”

Is that possible? I believe it is.

But it is possible only with a sizable endowment that will supplement our annual budget for years to come.

To me, the success lies with each of us doing our part in whatever way we can. It might mean making a personal donation to the foundation – LARGE or SMALL. Or,

doing our part might just be in securing donations and/or commitments from other people. Or in getting other people to ask for a commitment from their sphere of influence. Soliciting donations is all about who does the “ask.” Potential donors will be much more responsive if they are asked by someone they know, respect, or have some sort of relationship with. Cold calling is just so much harder – an uphill battle. So, I ask each individual or family at Ohef Sholom to consider trying to secure one or two commitments over the next 6 months so that we can achieve our goal.

In honor of Kurt Rosenbach's dedication to Ohef Sholom Temple and the Foundation Board, the Foundation Board has created a special fund within the Foundation entitled “Kurt's Club.” Donations can be made to this fund in any amount. So, for those congregants who would like to be involved in this important Eternal Light Campaign and who would like to be a part of the future of OST, here is the opportunity. And at the same time, what a great opportunity to honor and thank Kurt for all he has accomplished for our Temple. For details on how to make a donation to Kurt's Club please call me or the Temple Office.

I would also like to welcome and congratulate the new Ohef Sholom Foundation Board which was elected at the Foundation's annual meeting on November 7, 2013:

President – Rob Goodman

Vice-President – Eddie Kramer

Secretary – Bill Nusbaum

Treasurer – Jay Friedman

In closing, I would like to refer to the words inscribed on the doorposts of our Temple: *“A House of Prayer For All Peoples”*

Please help us continue to serve all people regardless of their ability to pay.

Thank you.

Linda Fox-Jarvis  
*President*

### The End of the Year is Coming Quickly...

Consider the many ways you can enjoy tax benefits  
while helping Ohef Sholom Temple along the way.



Create a  
*Jewish Legacy*

Join the Eternal Light Society and Create a Jewish Legacy today for Ohef Sholom Temple. Contact Philip S. Rovner with the Tidewater Jewish Foundation at (757) 965-6111, [psrovner@ujft.org](mailto:psrovner@ujft.org).

Options for Year End  
Giving

Gift of Cash or Property

Charitable Bequest

IRA Charitable Rollover

**Tzedakah**, literally Justice, means more than just giving money. It is a responsibility, a duty, and an obligation to care about and help people. There are many ways to practice Tzedakah and encompass many of the values from our tradition. Our school classes considered these when they each decided where their tzedakah money would go. The Special places they chose for this money this year are:

**The Nursery, Pre-Kindergarten and First Grade classes** chose *The Religious School Relief Fund*, so everyone can have a chance to learn about being Jewish and to learn Torah. (*Talmud Torah*)

**The Second Grade Class** wants to help people and families who are victims of fires, to offer comfort and help them provide replacements for things they lost. (*G'milut Chasadim*, acts of loving kindness and *Rachamim*, Mercy)

**The Third Grade, Fifth Grade and Sixth Grade Classes** voted to help the SPCA to care for and find homes for homeless pets. (*Tza'ar Ba'alei Hayyim*, *G'milut Chasadim*, acts of loving kindness and *Simchah*, Joy)

**Kindergarten, Fourth Grade, and as an additional choice, Sixth Grade Classes** will be supporting Children's Hospital of the Kings Daughters (CHKD) (*Pikuach Nefesh*, Saving of Life, *Shemirat Ha-guf*, guarding the body, *Rachamim*, Mercy, and *G'milut Chasadim*, acts of loving kindness)

**Seventh Grade** Tzedakah money will go to *HelpHOPELive*, an organization raising money to help Ethan Kadish, the boy who was struck by lightning at a URJ Camp this summer. The money will go toward medical costs associated with his extended hospital stay as well as the ongoing care he will require. (*G'milut Chasidim*, and to offer *Ruach*, Jewish Spirit)

**Eighth Grade** has chosen *Mazon*, a Jewish Response to Hunger working to end hunger among people of all faiths and backgrounds in the United States and Israel (*Ha'akhalat Re'evim*, Feeding the Hungry) They will also be supporting the Wounded Warriors Project. (*Hakem Takim Imo*, Aiding Those in Distress)

**Ninth Grade** will be supporting and helping the Caring Committee with "Feed-A-Child" Program, a program that helps children get the nutritious and easy-to-prepare food they need over the weekend when they are not getting meals through the USDA School Lunch Program. (*Ha'akhalat Re'evim*, Feeding the Hungry)

**The Confirmation Class** has chosen *Nothing But Nets*, an program supported by NFTY to purchase mosquito nets for \$10.00 for families in Africa to prevent malaria. (*Pikuach Nefesh*, Saving of life, *Shemirat Ha-guf*, guarding the body and *Hakem Takim Imo*, Aiding Those in Distress)

Our classes are all also doing special Mitzvot throughout the year for our Community Jewish agencies in conjunction with our own Caring Committee. This includes the "Big 25" Holiday Food Basket Drive, and collecting socks, mittens, crayons and books for JFS Dreidel project. The older classes will also be helping the ninth grade with the "Feed-A-Child" Program.

## Kids & Kiddush

Experience God's World Through Touching

Saturday, December 21, 2013



Bring your family for food & crafts along with a brief service & songs led by Rabbi Roz & Cantor Wally.

Appropriate for 3<sup>rd</sup> grade & younger.  
Infants & older siblings welcome!

For more information & to RSVP please contact Kitty Wolf  
[kitty@ohefsholom.org](mailto:kitty@ohefsholom.org) 757-625-4295 [www.ohefsholom.org](http://www.ohefsholom.org)

This year our theme is "God's Paintbrush," based on the award-winning book by Rabbi Sandy Sasso. We will explore together the many ways we can encounter God and celebrate God's creations.

Bring your child, "pick up a brush" and "paint" with us!

9:00  
Bagels & Juice

9:30  
Service

10:00  
Family Activity



# ADULT LEARNING

2013 - 2014

5773 - 5774

## UPCOMING ADULT LEARNING SCHEDULE

### December 8

Intro to Judaism ..... 10:00 a.m.

"Chanukah" with Dr. David Metzger

Men's Club Carpool Café ..... 10:30 a.m.

"Myths, Legends, Tales & History" Jewish Connections to the Superhero Genre" with Tim Robinson

An analysis of many popular superheroes reveals a distinct relationship to Jewish cultural traditions. This talk will analyze Jewish ideologies that are present in several Marvel and DC Comic heroes, from Superman, Wonder Woman, The Thing (from The Fantastic Four), to members of The X-Men. We will trace various historical events as well as the Jewish myths, legends and tales from which these heroes derive.

### December 15

Judaism 201 ..... 11:15 a.m.

"The Past, Present, and Future of Reform Judaism" with Rabbi Steinberg

This class will treat dissatisfactions with European Judaism of the early 1800s, efforts to affect change, development of the American Liberal experience, and trends for the future.

For more information on any Adult Learning Activities please call the Temple at 757-625-4295 or email [information@ohefsholom.org](mailto:information@ohefsholom.org). RSVPs can be sent to [reservations@ohefsholom.org](mailto:reservations@ohefsholom.org) unless otherwise stated.

Every Tuesday at 7:00 p.m. and Saturday at 9:00 a.m. the Adult Education Committee sponsors a Torah Study class. As of September 24, the Tuesday night group is studying Pirkei Avot. All are welcome!

Mussar\* classes are ongoing. You can receive information on meeting times by contacting the Temple at 625-4295.

## FROM THE ADULT ED COMMITTEE

"With Great Power - comes great responsibility!"

"With a Great Speaker (and free brunch) - comes great discussion!"

One of these quotes was inspired by the Talmud. The other tells us something to look forward to! On December 8 at 10:30 a.m. we'll learn about Spiderman, Superman, the X-Men, and Batman, our comic book Patriarchs. These characters created by Jews represented our American ancestors' experiences of being new immigrants in America. Like the Jews who came before them, these authors, the people of the book, reinvented themselves and also became the people of the Comic Books. Please join us as Tim Robinson discusses "Myths, Legends, Tales & History: Jewish Connections to the Superhero Genre."

On December 8 at 10 a.m., please join our Intro to Judaism class as we explore a more ancient group of superheroes, learning more about the Maccabees and Chanukah. There probably will be no debate on whether Judah's Hammer could be Thor's Hammer, but you never know where the discussion will lead.

On December 15 at 11:15 a.m., please join us for Judaism 201 with Rabbi Steinberg as he discusses "The Past, Present, and Future of Reform Judaism." Will we have super hero Rabbis? Who knows, but stop by and find out!

Please join us for one of our many learning opportunities.

L'shalom,

Todd Waldman, Adult Ed Committee Co-chair

## NEW MUSSAR GROUP FORMING

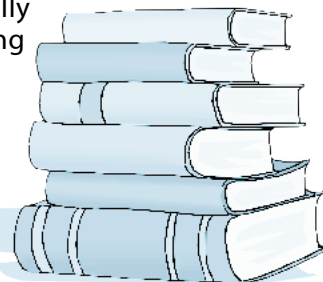
A new Mussar Group is forming in Norfolk to be facilitated by Matthew Weinstein and Debi Stadlin. The group will meet once a month and we will be reading the book, *Everyday Holiness*, by Alanis Morinis as a guide to our discussions. The book can be purchased on Amazon.com.

Please contact Debi Stadlin at 724-0807 or by email at [debistadlin@me.com](mailto:debistadlin@me.com) if you are interested in more information.

## LIBRARY NEWS

As winter sets in remember that the OST library is always a great place to come and warm up while browsing our diverse collection. Stop by and check out resources on countless subjects that range from philosophy and art to popular fiction and history. Your OST Library is open throughout the week during the main office hours and is professionally staffed on Sundays during Religious School from 10:00 a.m. - 12:30 p.m.

Stefany Guido  
Ohef Sholom Temple Librarian  
and Archivist  
[guidostefany6@gmail.com](mailto:guidostefany6@gmail.com)



# We DID IT!! Rain, Humidity & All... We DID IT!!

OST helped sponsor a team called **The Treasure Chests** for the Susan G. Komen Race for the Cure on October 12, 2013. Our OST team, made up of 8 survivors and supporters as well as many other financial supporters, helped the Komen organization raise over \$275,000 towards the goal of ending Breast Cancer.



Sandy Forte, Mara Bates, Angie Edrington, Marsha Moody, Celia Friedman, and Kari Friedman. (Not pictured Jeanne Miller)

While some of our Team Members braved the weather elements by participating in the Run/Walk, others chose the "Sleep In" category. Either way, each person's involvement played a significant role in the team's success. In the end, the weather actually cooperated to give us a "perfect" low mist with high humidity run/walk. We had a blast seeing all the outrageous costumes and team outfits, and were unbelievably touched by the Survivors' Walk/Parade and inspirational messages that resonated throughout the event!

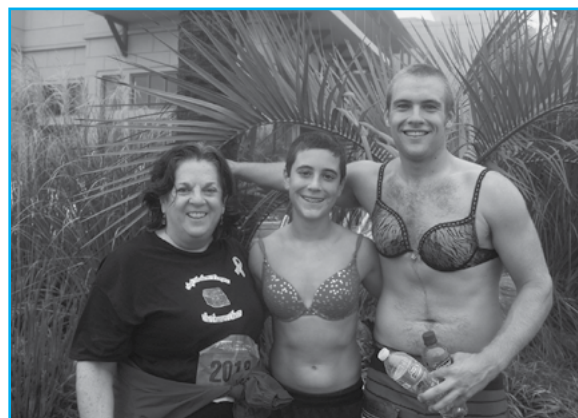
Being blessed by our first year's success, **The Treasure Chests**

are reaching for a higher goal of participation next year! **So we will start our recruitment now!**

If you want to join a team that is reaching for a goal that helps our mothers, grandmothers, and daughters (current and future) – as well as the men in our lives – who live in our Tidewater area,

please consider joining **The Treasure Chests**. Up to 75% of the funds raised by **The Treasure Chests** for the Race for the Cure will remain here in Tidewater to provide breast health research, diagnostics, screening, treatment, services and education for uninsured or underinsured women. The remaining 25% goes to fund national research towards discovering the cause of breast cancer and, ultimately, its cure.

For registration or support information, please feel free to contact Mara Bates at [mararecycl@yahoo.com](mailto:mararecycl@yahoo.com).



Marsha Moody with Joe Albert and Ben Casey.

## Do You Know Your Family Tree?

Did you know that 1 in 4 Jews of Ashkenazi descent is a carrier for at least 1 of 19 preventable Jewish genetic disorders? It's important to get screened!



There will be a **FREE** screening on Sunday, December 15, 2013 from 10:00 AM to 3:00 PM On the Reba and Sam Sandler Family Campus of the Tidewater Jewish Community



**Toxics:** Pesticides are designed to be harmful, and have been linked to many severe illnesses in both humans and wildlife (Beyond Pesticides). Children are especially susceptible to these chemicals since they are frequently touching surfaces, and they breathe more air per pound of body weight than adults. Search for the least toxic methods for controlling pests in your home:

[www.beyondpesticides.org/alternatives/factsheets/index.htm](http://www.beyondpesticides.org/alternatives/factsheets/index.htm)

Eco-tip provided by GreenFaith: [www.greenfaith.org](http://www.greenfaith.org)

# THE OHEF SHOLOM FOUNDATION

## NON INCAUTUS FUTURI

I know most of you are thinking, "What's he doing writing for the Bulletin again?" and "Why the Latin title?" Thought you'd gotten rid of me, didn't you? Well, unfortunately, there were lots of things I left undone, such as thanking those of you who, during my presidency, made legacy gifts to Ohef Sholom Temple through the Ohef Sholom Foundation. Yes, these are actually different organizations.

The Ohef Sholom Foundation exists solely to support Ohef Sholom Temple by means of managing the Temple's endowment funds. The Foundation campaigns to raise legacy gifts, which is why you see "Eternal Light Campaign" posters at various locations throughout the Temple. The Foundation manages these endowment gifts by providing an institutional memory ensuring that the donors' wishes are followed to the letter. By providing this guidance, the Foundation safeguards donors' gifts. The Foundation educates our Board and our Executive Committee on our different endowment funds and their intended use.

The Ohef Sholom Foundation is always working to grow our endowment because we understand how important leaving a legacy is to future generations. In the past several years, under Kurt Rosenbach's tireless leadership, we've added over \$1 million to current gifts and \$1.5 million to promised gifts. This is great for the Temple, but our needs are greater still.

Endowments are a huge part of successful synagogues. We could not operate at Ohef Sholom if we didn't have the benefit of forward thinking and generous benefactors whose gifts support every facet of Temple operations. Roughly ten percent of our budget is financed by our endowments. As increases in expenses continue to outpace our ability to raise commitments from congregants to pay them, our endowment will become even more important.

We all owe a huge debt of gratitude to those who have helped assure the future of Ohef Sholom Temple. This is where the Latin bit comes in. It means "Not unmindful of the future," and I think it's a perfect description of those who have made an endowment commitment. Ask us how you can join them in ensuring your beloved Temple's future.

*Ed Kramer*



### ENDOWER OF OUR FUTURE

\$1,000,000+

Matthew and Karen Fine  
Andrew and Kim Fink  
Edward George Kaufman  
Bernard Lubschutz

### GUARDIAN OF THE SANCTUARY

\$500,000+

### PRESERVER OF OUR HERITAGE

\$250,000+

Sarah Cohen Memorial Scholarship Fund  
Helen Gifford  
William A. Goldback  
Andrew and Esther Kline  
Edward and Anne Kramer  
MiRoMa  
Jonathan and Alyssa Muhlendorf

### SUSTAINER OF THE TORAH

\$100,000+

Percy Brill  
Rita B. Cogan  
Marvin W. and Lillian S. Davis  
Milton, Fannie and Leslie  
Friedman Family Foundation  
Jane Klein Goldman  
Robert and Martha Goodman  
Steven and Marilyn Kayer  
William and Sharon Nusbaum  
Gene and Sharon Ross  
Daniel and Helen Sonenshine  
Ron and Linda Spindel  
Neal and Lisa Stern

### KINDLER OF THE MENORAH

\$50,000+

Arthur and Renee Diamonstein  
Allan and Susan Donn  
Samuel Goldback  
Kaufman Hall Renovation Fund  
Debra Mervis-Keeling  
Kline/Strelitz Jewish Heritage Fund  
Edward and Sarah Levy  
Pincus Paul  
Kurt and Rose Rosenbach  
Philip S. Rovner and Joanne E. Batson  
Robert and Judy Rubin  
Annette Shore and Milton Kaufman  
Samuel and Yetta Spiro-Snyder  
Alan and Brenda Stein

### KEEPER OF THE ETERNAL LIGHT

UP TO \$50,000

Sylva B. Altschul  
Dolores and Alan Bartel  
Edmund Baydush  
Michael and Paula Blachman  
Bonk and Rivin Families  
Louis and Isabel G. Brenner  
Leo Cohen  
Dalis Foundation  
Sandy Forte-Nickenig  
Rabbi Connie Golden  
Jeffrey H. Goodove  
Rose Ann Grossman  
Lee Kanter and Marjorie Kanter Levy  
Jerome Kern  
Library/Media Fund of the Sisterhood  
Kerner Family  
Edward Kesser  
Herman and Lenore Laibstain  
Leslie and Jay Legum  
Rose and Carl Lifland  
Betty Moritz and Lee and Bob Liverman  
Rosetta and Carl Marc  
Mervis Family  
Hallie Cohen Miller  
Bert and Sarah Newfield  
Fred and Mimi Nicholson  
Mimi Nicholson  
Robert Nusbaum  
V.H. and Nancy Nusbaum  
Rapoport Family  
Rivin Family  
The Mollie and Samuel Robbins  
Scholarship Fund of the Sisterhood  
Ada Schewel Salisbury  
Louis and Carol Sherman  
Robert and Mimi Stein  
Ira and Jean Steingold  
Robert Stern  
Linda and Alan Troy  
Waldholtz/Pakula

*As of October 30, 2013*

# NEWS FROM THE OHEF SHOLOM FOUNDATION ANNUAL MEETING

The annual meeting of the Board of Directors of the Ohef Sholom Foundation was held on November 7, 2013, in Kaufman Hall.



**Kurt Rosenbach, Ohef Sholom Foundation's past president, and Rob Goodman, the Foundation's new President**

President Kurt Rosenbach reported that as of June 30, 2013, the foundation had reached a total of \$10,305,596 consisting of cash and investments of \$4,251,492 and deferred gifts of \$6,054,104 representing testamentary bequests, insurance policies, and IRA and trust beneficiary designations. Since June 30, 2013, cash and investments have increased by approximately \$300,000. Distributions from funds for the fiscal year ended 6/30/13 amounted to \$115,117 and for the current fiscal year are scheduled to be \$159,727, which represents over 18% of the amount of dues income of the Temple.



**Rabbi Roz delivers an opening prayer**

Kurt noted that grants and distributions support building renovations, the Temple's operating budget, library, music program, religious school, youth program, scholarships and a variety of other programs which bring vibrancy to the Temple's activities and keep members interested and involved.

Kurt further stated that during the year 23 new funds were created and the donors or their representatives were recognized. The total number of funds comprising the Eternal Light Society is now 74. It was pointed out that all funds of the Eternal Light Society are for the sole benefit of the Temple and help to keep membership dues affordable.

Members of the Temple staff who handle the grants process and distribution of funds were recognized as well as staff of the Tidewater Jewish Foundation, which



**Ohef Sholom Foundation Board members and staff of the Tidewater Jewish Foundation** provides investment and administrative services for the Ohef Sholom Foundation. Philip Rovner, President of the TJF, who has facilitated the creation of almost every fund since OSF partnered with TJF, was thanked for his extraordinary service to the Foundation.

Kurt thanked the other officers of the Foundation, Rob Goodman, VP, Bill Nusbaum, Secretary, and Jay Friedman, Treasurer for their support and Ed Kramer and Charlie Nusbaum for leading the Eternal Light campaign and thanked Bert Nusbaum, a past president of Ohef Sholom Temple who has served on the Board of the

Foundation since its inception and has asked not to be re-nominated, for his long years of service. Kurt announced that he felt it was time for new



**Philip Rovner, President of the Tidewater Jewish Foundation, addresses the group**

leadership of the Foundation and that he wished to retire from the presidency but continue to serve on the Board.

Bill Nusbaum presented the report of the nominating committee. Morris Fine, an honorary director of Ohef Sholom Temple, and Ed Kramer, the immediate past president of Ohef Sholom Temple, were elected to the Board of the Foundation. Rob Goodman was elected President, Ed Kramer, Vice President, and Bill Nusbaum and Jay Friedman were re-elected Secretary and Treasurer respectively.

Rob Goodman spoke of how much he is looking forward to his service. His remarks will appear in next month's Temple POST.



**Ohef Sholom Foundation Board members and donors to the Eternal Light Society gather at the Annual Meeting**

# THE MEN'S CLUB

The Archives Committee has recently discovered that **2013 is the 75th anniversary of the Ohef Sholom Brotherhood**, founded in 1938. To honor this commemorative milestone a special **Men's Club meeting on December 8th** will be hosted at the home of Ted and Susan Kaufman.

Sunday morning, **October 20, the Carpool Café** featured Rabbi Connie Golden's discussion of her central European trip to Jewish historical sites. Her primary focus was on Jewish life before, during and after World War II. The talk was illustrated with photographs and handouts highlighting the significance of each site.

**October 18's Shabbat dinner** offered a first-ever choice of turkey meat loaf or beef meat loaf prepared by Chef Rob Collett who worked tirelessly in the kitchen along with Scott Galbraith, Don Sussman, and Jason Mewhinney to prepare food for over 140 folks attending the dinner. To accommodate the large gathering three serving lines were set up in Kaufmann Hall. Following the Shabbat dinner a special service was held in the Sinai Chapel dedicating the newly installed stained glass panels from Temple Sinai. Rabbi Steinberg talked about the history and meaning of the stained glass windows to a standing room only crowd.

Thank you to all the men who consistently support the Men's Club when called upon to serve.

**Don Friedman**, *Men's Club President*  
mensclub@ohesholom.org, 553-6317

## THE MILITARY SUPPORT AND OUTREACH COMMITTEE

The Military Support and Outreach Committee is a group of Ohef Sholom Temple military veterans and active duty members who volunteer their time to help others. In November we received a very generous donation from Charles and Minette Cooper. This vital funding will help the MSOC continue serving others into the future. If you are considering making a donation commemorating your military service or that of a loved one, or simply to honor those that are serving or have served your donation can now be accepted online through the Temple's website or by a check mailed to the Temple office. Thank you to everyone who has contributed so the MSOC can continue its outreach to the military and the community.

**On November 10** a joint venture of the MSOC and the Men's Club hosted a special Carpool Café honoring OST veterans who served in the military. In its 2nd year this newly created format provided 22 veterans the opportunity to share a personal story or milestone in honor of their service before a gathering of more than 60 in Kaufmann Hall. Thank you to everyone whose contribution made this a very successful event.

**Don Friedman**, *Chair*  
military@ohesholom.org • 625-4295



## SPECIAL NEEDS & SECURITY COMMITTEE

The primary functions of this Committee are to assess the needs of members of the congregation who have disabilities, determine which needs are being met, and develop recommendations for filling needs which still need to be met. The Committee is defining disability broadly, thus including limitations that are associated with acute and chronic illnesses as well as issues related to the aging process.

An initial planning meeting was held on September 24, 2013, to establish the goals of the Committee. In addition, invitations were sent to a number of individuals to ask if they would like to join the Committee. At this time membership includes Jim Schloss and Jerry Golden as co-chairs, and David Adelman, Tom Bachman, David Benjamin, Minette Cooper, Linda Fox-Jarvis, Leslie Friedman, Bonnie Kerner, and Peter Sallmaier.

Security of the congregants and the building obviously is an important issue. While the building must always be accessible to first-responders, systems and plans must also be in place should the need ever arise to evacuate the building, or lock down the building and shelter-in-place. These important procedures become more complex when the plans are to include individuals with disabilities and older individuals with reduced mobility. For this reason, responsibility for both special needs and security will be assumed by one committee.

To start the process Jim Schloss, Jerry Golden, Gail Bachman, Kitty Wolf, Rabbi Steinberg, Tom Bachman, and Mike Phillips met on October 2 with four officers of the Norfolk Police Department Special Operations Division. After touring the building and grounds the police officers complimented the congregation on the obvious concern about security, and made a number of recommendations for enhancing what is already being done. When a final report is submitted, plans will be made for a more thorough review of security needs and procedures.

If you have any thoughts or suggestions related to special needs or security, feel free to contact either Jim Schloss (zjamesd@aol.com) or Jerry Golden (doc.gsg@cox.net).

# FROM THE SISTERHOOD

As you read this, your Co-Presidents are excited about going to San Diego to attend the URJ Biennial/WRJ Assembly. This is a first for us and we hope to learn a lot, form new friendships and bring back fresh ideas for Sisterhood.

We had a busy fall.

At the end of October, Sisterhood successfully hosted **"Nosh and Knowledge,"** chaired by **Marsha Moody** and **Celia Friedman**. This luncheon/panel discussion was about breast cancer awareness, a topic that was well received. We gathered information about the latest methods of detecting breast cancer and listened to touching survivors' stories. Hopefully, there will be more events like this one in the future, both at noon and at night. Subjects could be medical, legal, related to the arts or of general interest. Ideas are always welcome.

This year, **Thanksgiving** and **Chanukah** are overlapping, a rare occurrence that brought out some very funny names, like Thanksgiving. Ohel Sholom has alternated hosting Thanksgiving services and a reception with **Freemason Street Baptist Church** for over 80 years. This year was OST's turn to host and our thanks go to **Sara Bachman** for her hard work and for making the tables look so beautiful.

Our **Chanukah Dinner** was chaired by **Nichole Kushner, Anne Kramer and Dorianne Villani**. It was a lovely affair, and good food and fellowship were enjoyed by many congregants.

**Jeanne Miller**, our treasurer, would like you to know that Sisterhood now has a credit card option so that dues, program payments or donations may be paid by credit card. If you would like to honor someone with a donation, please send the information to [sisterhoodtribute@ohelsholom.org](mailto:sisterhoodtribute@ohelsholom.org).

## Here is a short breakdown of Sisterhood Funds/Scholarships:

- Shabbaton Account provides scholarships for the annual Shabbaton,
- Molly and Samuel Robbins Fund provides scholarships for OSTY conventions,
- Convention Fund for WRJ Sisterhood conventions,
- Miller Scholarship Fund for JCC and camp,
- Floral Fund for weekly Shabbat services,
- Jerome Kern Library/Media Fund for media projects,
- "Casseroles ForKids" donates casseroles for afterschool homework programs.

We would like to stress again that all Sisterhood Board Meetings are open to all Sisterhood members. Come and see what we are all about!

Here are the dates for Sisterhood meetings through the Temple year:

**Sunday, January 5, 2014 9:30 a.m.**

**Tuesday, February 4, 2014 6:00 p.m.**

**Tuesday, March 11, 2014 6:00 p.m.**

**Tuesday, April 1, 2014 6:00 p.m.**

**Our Annual Meeting will be May 20, 2014 in the evening.**

Please, always check the Temple website or office for possible date changes. There are many conflicting dates and times, since we are such a busy Temple!

We are still selling books in the lobby, so bring a book, pick up a book and pay for the book you purchase in the office.

**Lisa Cohen**, our wonderful **Judaica Shop manager**, needs help. Please, consider giving a few hours on a Sunday to assist her.

**Start looking through your basements and your attics—our big Rummage Sale will be on Sunday, March 9, 2014.**

We are hoping for a lot of treasures. Look for more details in the next few months regarding what items to donate, and when and where we can accept them at the temple.

Consider joining Sisterhood! Registration forms are in the lobby and remember that your first year as a Temple member gives you free Sisterhood membership for that year.

Yours in Sisterhood,

**Gabriele Jiannas**  
Sisterhood Co-President  
496-5222  
[gbiannas@outlook.com](mailto:gbiannas@outlook.com)

**Leslie Legum**  
Sisterhood Co-President  
623-9948  
[les210@verizon.net](mailto:les210@verizon.net)

## Save the Date & YOUR STUFF FOR THE



### Sunday, March 9, 2014

8:30 am - 2:00 pm

## WHAT

Toys  
Furniture  
Household Items  
Books  
CDs & DVDs  
Jewelry & Bags  
Children's Clothing  
(up to size 12 ON HANGERS!)

**All items must be in good clean condition!**

## NOT ACCEPTED

Adult clothing, hats, shoes,  
broken or damaged items  
(Except for jewelry)

## HOW

Items can be dropped off from Sunday, February 23 through March 9 at OST Kaufman Hall. Limited storage is available off site before February 23 for large items only (i.e. furniture).

## WHY

All proceeds will help support Ohel Sholom Temple Sisterhood programs

## MORE

For more info contact:  
Sheryl Makela  
471-1838, [sherylmakela@yahoo.com](mailto:sherylmakela@yahoo.com) or  
Marsha Moody  
495-6573, [vamood1@verizon.net](mailto:vamood1@verizon.net)

## DECEMBER BIRTHDAYS

### December 1

Lawrence J. Goldrich  
David I. Millison  
Margaret Zimmerman

### December 2

Richard S. Glasser

### December 3

Heather L. Bloom  
Barbara Glasser  
Jeffrey Michael Kline

### December 4

Bruce R. Frieden  
David P. Kerpelman

### December 5

Bruce D. Waldholtz

### December 6

Louis Brenner  
Sheldon L. Cohn  
Noel Evans

Valerie Glassman  
Roberta Sherman

### December 7

Monica Douglass  
Mildred Dreyfus  
Andrew S. Fine

Ronni M. Foster  
Donald Friedman  
Scott Galbraith  
Alan L. Troy

### December 8

Alyssa Embree  
Vivian Fish Forman  
Ruth E. Guthertz

### December 9

Terri Budman  
Ed Fraim

### December 10

Diane Lee Michalove  
Bradley J. Waitzer

### December 11

Alfred Dreyfus  
Linda Peck  
Andrew D. Stein

### December 12

Kari L. Amuial  
Lynn Cohen-Hoelzer  
Martha J. Goodman  
Yvonne Lerner

### December 13

Terri Smith Belkov  
Amantha Berkowitz  
Aaron Glassman  
Joyce Graber  
Kay Moore  
Walter D. Rosenberg, Jr.

### December 14

Donna R. Brownstein  
Paul Terkeltaub

### December 15

Barbara Lifland  
Tom Russel

### December 16

Brad Embree  
Mandi Firoved  
Arthur Schoner  
Diane Scott Stein

### December 17

Barbara Johnson  
Donald A. Myers  
Michael M. Romash  
Paula Russel

### December 18

Robert Brotman  
Frank Campion  
Stephen Miller  
Kristina Neukrug  
Andrew S. Nusbaum  
Ellen Ruben

### December 19

Howard R. Feldman  
Leonard Levine  
Burke Margulies  
Betty Siegel

### December 20

Sally Kocen  
Jack Kress  
Fredric Schneider  
Barbara Spigel

### December 21

Betty Moritz  
Rochelle Rosenberg  
David Winkelsas

### December 22

Laura R. Forman  
David Furman  
Marci King

Bryan Mesh  
Gretchen M. Ostroff  
Virginia Rosen  
Matthew Weinstein

### December 23

Bettie Minette Cooper  
Debra Duncan  
B. Danny Jason  
Sara Mendelson  
Stephen D. Wohlgenuth

### December 24

Bert Lowenthal  
Deborah Shipman

### December 25

Elayne Axel  
Matthew Fine  
Stephan Gordon  
Howard A. Mendelsohn

### December 26

Michael Andrew  
Zimmerman

### December 27

Edward Kraus  
Heidi Mitchell  
Ruth B. Posner  
Linda C. Troy

### December 28

Rhonda Dreggors-  
Newport  
Benton Flax  
Beth Gerstein  
Pam Hirsch  
Melvin Radin  
Ronald F. Spindel

### December 29

Ira M. Cantin  
Julius Miller  
Kathryn Hofheimer  
Wilson

### December 30

Joan Baydush  
Larry Blum  
Selma Snyder Rayfield  
Brenda C. Stein

### December 31

Eddie Ausch  
David Benjamin  
Barbara Broudy Howie  
Vivian Margulies  
Jill Salomonsky

## DECEMBER YAHRZEITS

### December 1 – 7

Betty Alper  
Alfred Bernstein  
Naomi Brenner  
David Gerald Bress  
Irene C. Chapel  
Elizabeth S. Coan\*  
Lee David Cohen  
Morris Cross  
David Robert Davidson\*  
Samuel Doctor\*  
Rachel M. Donn\*  
Phoebe Moss Ebersson\*  
Betty Friedman  
Sylvia Gady  
Julius Green  
Douglas Hinkle  
Bill Joyner  
H. Lee Kanter\*  
Marilyn Kastner  
Bernard Kirschner\*  
James N. Kurtz  
Dr. Alter Laibstain  
Cecile W. Ledsky\*  
Benjamin J. Lit\*  
Marcella Marks Liverman\*  
Minnie Levi Loeb\*  
Harry H. Mansbach  
Mary Mazur  
Samuel Mendelsohn\*  
Harry A. Mervis\*  
Everett Metzger  
Jacob Mewhinney  
Murray Pell  
Dorothy Phillips\*  
Albert Pitler  
Theodore Plattner\*  
Claire Plon  
Robert Romulus  
Leona Rosenthal  
Arnold Rubin  
Herman A. Sacks\*  
Elizabeth Sacks  
Ronald B. Silverman  
Katie Skomorucha  
Sarah B. Snyder

Lillian Staub  
Dr. Steven G. Steinberg  
Jacob Umstadter\*  
Maurice Unger\*  
Louis Wachtel  
Stanley S. Watts\*  
Frank Weisel, Jr.\*

### December 8 – 14

Mary G. Adler\*  
Milton Bass  
Reena Berenson  
Bell Berkowitz  
Yetta Bornstein  
Ida Ruth Brenner  
Paul Briskin  
Rose S. Bunting\*  
Julius Buxbaum\*  
Morris Cogen  
Jennie Donsky  
Celia M. Elkin\*  
Sally Fischer  
Esther Fish  
Joseph M. Fish  
Phillip Fletcher\*  
Frances Fonal\*  
Louis Frankfurt\*  
William Goldback  
Sam Goldberg\*  
Bennie A. Grablowsky\*  
Lillian S. Green  
Cathy Hainer  
Louis Lester Horwitz  
Morris Kaufman  
Laura Kesser  
Bessie Barr Kirsner\*  
I. Lysle Levine\*  
Maxwell Levy  
Leroy Margolius\*  
Sidney Mossovitz  
Clara Myers\*  
Maurice Noble  
Lucille Novish  
Dora L. Petock  
Herman "Robbie" Robins  
Stanley Ira Rosenberg  
Rebecca Rothstein Rubin\*  
Asa Sartorius\*  
Esther G. Seeherman

Abraham Sherman  
Bertha G. Snyder\*  
Julius Snyder  
Maury Spencer  
Ciel A. Stern\*  
Ernestine "Tennie" Tischler\*  
Anita Ullman  
Carrie Weisel\*  
Ann Wolf

### December 15 – 21

Marion Baydush  
Irving Berger  
Jeffrey Chanin\*  
Blanche Chase  
Judy Colison  
Jean Comess\*  
Lois Ginsburg  
Marcia Glass  
Selma Gottlieb  
Phyllis Rapoport Halpern  
Helen Krauss Hardy\*  
Ann Harris  
Sylvia Jason  
Walter Kleeblatt\*  
Ada Kruger\*  
Lawrence "Lori" Leviton  
Sol Mednick\*  
Monroe Mendelson  
Joseph Neukrug  
Virginus H. Nusbaum\*  
Julia Plotnick  
Pearl Francis Posner  
Suzanne Spigel Redmond  
Muriel Rosen  
Esther Ryen  
Harvey Ronald Saunders\*  
Phillip Scherer  
Isaac R. Schewel  
Tillie Schewel  
Harry L. Schwan\*  
Annette Muriel Shore  
Raymond Thompson\*  
Michael Umstadter\*  
Aaron Zenovitz

### December 22 – 28

Mary Adler  
Tyler Jeffrey Ann  
Edmund David Baydush\*  
Rose Berger  
Hannah Waldfogel Berkovitz  
Victor Z. Blumenthal\*  
Frieda Cohen  
Leon Cohen  
Esther Doctor\*  
Gabriel Engel\*  
Arleen Merle Fink  
Rena Marcus Frankfurt\*  
Blanche Galumbeck  
M. Gustavus Goldback\*  
Jack I. Goldstein  
Lester I. Grossman\*  
Arthur Hainer  
Ruth Harding  
Sylvia Puritz Holub\*  
Frances "Betty" Horwitz  
Jack Jason  
Adolph Lombart  
Marie A. Mansbach\*  
Paul Murray  
Sarah Nordin\*  
Cilla G. Nusbaum\*  
Sidney Leon Nusbaum\*  
Jorge Orozco  
Dorsey G. Preddy  
Marguerite Rashti  
Abraham Ries\*  
Nathan Rosenberg  
Pearl S. Rothschild  
Jane T. Sherry  
Doris T. Siff  
Lawrence Silverman  
Dr. Irving Tavss\*  
Max Joseph Unger  
Nellie B. Waranch\*  
Rose Zelinger  
Lee Zittrain\*  
Anne Zorn

### December 29- 31

Nelson Alper  
Louis Aronson\*  
Lillian Beloff  
Anna Berger\*  
Ray K. Bloom\*  
Rose M. Brown  
Isaac Cohen  
Frieda Cohn\*  
Esther Colbus\*  
MaryJo R. "Jody" Colbus\*  
Jane Frazier Delany  
Sam Dembicer\*  
Alfred Joseph Dreyfus\*  
Steven Eichelbaum  
Abraham Fischer  
Sadye Gifford\*  
Esther Goldberg  
Joseph Goldin\*  
Rabbi Ronald M. Goldstein  
Dr. Samuel Gollub  
Mollie Gross  
Sally Gross\*  
Stanley Hirsch\*  
Isabelle Horne\*  
David Robert Katz  
Paul Laderberg  
Paul Lasakow  
Gertrude Lazier  
Barbara K. Lubar  
Juan Luna  
Fern Miller  
Sara Miller  
Lawrence Morse  
Rita Klein Moses  
Ben Ami Nemo\*  
Lois S. Nusbaum\*  
Goldie N. Rosenbaum  
Martha L. Rubin\*  
Malcom Schoner  
Belle Seligman  
Oscar L. Steinberg\*  
Rosalie Wilks\*

# WE APPRECIATE THE THOUGHTFULNESS OF THOSE WHO SUPPORT OST

by remembering and honoring their friends and loved ones through their generous contributions

## OHEF SHOLOM TEMPLE FUND

### In Memory of:

ARMOND CAPLAN  
\*Joseph Hecht, Mark Hecht & Linda Hecht-Schwartz  
LOUISE R. LETERMAN  
\*Jane & Lenny Frieden  
JEANETTE GOLDBERG MINK  
Jean Molofsky  
JOAN LETERMAN NUSBAUM  
\*Wall, Einhorn & Chernitzer, P.C.  
SANDI ROGERS  
Ron Miller & David Fierman

### In Honor Of The Birth Of Twin Grandchildren to:

NANCY & DAVID EMBREE  
\*Diane & Ken Muhlenhoff

### With Appreciation For Support During Jerome's Illness from:

\*Pansy & Jerome Perlman

### Wishing A Speedy Recovery to:

JEROME PERLMAN  
\*Jane & Lenny Frieden  
SUSIE CLARK SMITH  
Arlene & Allan Zeno

### In Honor Of The Wedding Of Her Grandson to:

JOAN HARRISON  
Sonia Land

## RABBI MANDELBERG'S DISCRETIONARY FUND

### In Memory of:

JEANETTE GOLDEN  
Rabbi Connie & Dr. Jerry Golden  
AARON RASHTI

\*Margie & Robert Rashti

### In Honor Of Allison & Jason's Wedding to:

RABBI ROSALIN MANDELBERG

\*Debbie & Jack Glaser

### In Honor of the Birth of Their Granddaughter Zara Luna-Bord to:

RACHELLE & ROBERTO LUNA  
\*Nanci & Mike Glassman

## SISTERHOOD FLORAL FUND

### In Memory of:

BARUCH BROWN  
\*Lyla & Bruce Longman  
LILLIAN BROWN  
\*Lyla & Bruce Longman  
MARGIE BUXBAUM  
Marilyn & Stuart Buxbaum  
LILLIAN EINHORN  
\*Dianne & Gerald Einhorn  
HERTA FAMILIER  
\*Ruth Gutherz

ALICE FRIEDMAN

\*Rona McMillan

JOSEPH FRUMKIN

\*Kenneth Frumkin

BIRDIE TAKER GARTNER

\*Renee & Arthur Diamonstein

MERVIS ELMER GARTNER

\*Renee & Arthur Diamonstein

HENRY T. GROSSMAN

\*Rose Ann L. Grossman

VIOLA KAYER

\*Patricia & Barry Kayer

PHILLIP LEVENTHAL, ESQ.

\*Rose Ann L. Grossman

SYLVIA D. LISNER

Brenda & Sheal Lisner

ROBERT LOWENTHAL

\*Bert Lowenthal

JEROME MELVILLE

\*Lyla & Bruce Longman

HERMAN ROMASH

\*Michael Romash

KATHY ROSENBAACH

\*Rose & Kurt Rosenbach

FRIEDA ROSENBERG

Rose & Kurt Rosenbach

ROSE MORGANSTERN SACHS

\*Marcia Hofheimer

FLORENCE WATERS

\*Jane & Lawrence Waters

GAIL RUBIN WHITE

\*Lyla & Bruce Longman

## RELIGIOUS SCHOOL RELIEF FUND

### In Memory of:

DIANNE MURRAY

\*Michael Jaffe

JoAnne & Ken Klein

### In Honor Of My Bat Mitzvah from:

\*Hailey Foer

### Wishing a Happy 90th Birthday to:

ELLEN VANOS

Ada Schewel Salsbury

### In Honor Of The Birth Of Your Grandchildren, Jack & Gemma, to:

NANCY & DAVID EMBREE

\*Marion & Roger Lidman

## CHARLES WOODWARD MUSIC FUND

### In Memory of:

MAURICE STEINGOLD

Lawrence Steingold

### In Honor of:

CHUCK WOODWARD

\*Leslie & Jay Legum

\*Alice Twining

### Wishing A Happy Birthday to:

ALAN BARTEL

Harriet & Gerry Bloom

Marilyn & Stuart Buxbaum

Shirley Schulwolf Hainer

DOLORES BARTEL

Marilyn & Stuart Buxbaum

Shirley Schulwolf Hainer

### In Honor Of 50 Years Of Art Advocacy to:

MINETTE COOPER

Elayne L. Axel

Marilyn & Stuart Buxbaum

### In Honor Of Her Tireless Work To Promote Music & Arts Education to:

MINETTE COOPER

\*Judy Gutterman

### In Honor Of The Marriage Of Their Daughter, Dianne, to:

MARSHA & MARTY MOODY

Leslie & Jay Legum

### With Appreciation For The Remembrance & Hope Concert to:

CHUCK WOODWARD

\*Carol & Lou Sherman

### Wishing A Speedy Recovery to:

NANCY LAZIER

Betty & Irwin Sacks

## OHEF SHOLOM FOUNDATION FUND

### Wishing A Happy Birthday to:

ALAN BARTEL

Lee & Bob Liverman

DOLORES BARTEL

Lee & Bob Liverman

DONALD DOCTOR

Lee & Bob Liverman

JANE KLEIN GOLDMAN

Lee & Bob Liverman

MARTIN GOODE

Lee & Bob Liverman

JULIAN GUTTERMAN

Lee & Bob Liverman

ANDREW FINK

Lee & Bob Liverman

SIDNEY FINKELSTEIN

Lee & Bob Liverman

JACK FOX

Lee & Bob Liverman

DAVID M. KATZ

Lee & Bob Liverman

DEBRA KEELING

Lee & Bob Liverman

MARIAN LEAVITT

Lee & Bob Liverman

SHELDON LEAVITT

Lee & Bob Liverman

PHILIP ROVNER

Lee & Bob Liverman

ZELMA RIVIN

Lee & Bob Liverman

ADA SALSBUURY

Lee & Bob Liverman

ROBERT SEEHERMAN

Lee & Bob Liverman

GLORIA SIMON

Lee & Bob Liverman

LEO SIMON

Lee & Bob Liverman

IRA STEINGOLD

Lee & Bob Liverman

## SISTERHOOD

### In Memory of:

SANDY HURWIT

\*Judy & Burton Jaffe

### Wishing A Happy Birthday to:

ZELMA RIVIN

Dolores & Alan Bartel

## CARING COMMITTEE FUND

### In Memory of:

PATRICIA ALWOOD

Harriet & Gerald Bloom

## COMMUNITY OUTREACH

### In Memory of:

PATRICIA ALWOOD

Mark Hecht

MERLE LEVINE

\*Marion & Roger Lidman

### Wishing A Happy Birthday to:

ADA SALSBUURY

Dolores & Alan Bartel

### In Honor Of The Marriage of Your Son,

Michael, to:

JUNE & BO SAKS

\*Marion & Roger Lidman

## COMMUNITY OUTREACH - SOUP KITCHEN

### In Memory of:

JOAN B. MILLER

\*Richard Miller

### A Contribution Has Been Given by:

Debbie & Don Keeling

Lynnhaven Middle School National

Junior Honor Society

Carol Rosenblatt

Harriet & Richard Siff

### Wishing A Happy Birthday to:

PHILIP ROVNER

Dolores & Alan Bartel

ALAN D. STEIN

Dolores & Alan Bartel

DORIANNE VILLANI

\*Minette & Charles Cooper

### In Honor Of Our 58th Anniversary from:

\*Ruth & Joseph Goldberg

## COMMUNITY OUTREACH - FEED A CHILD

### A Contribution Has Been Given by:

\*Linda Fox-Jarvis & David Jarvis

## COMMUNITY OUTREACH - NEST

### In Memory of:

PATRICIA ALWOOD

\*Marion & Roger Lidman

Carol & Lou Sherman

MARY MARGARET PARISER

\*Carol & Robert Laibstain

### In Honor Of The Birth Of Their Granddaughter, Zara Luna-Bord, to:

RACHELLE & ROBERTO LUNA

\*Carol & Robert Laibstain

## MEN'S CLUB FUND

### Wishing A Happy Birthday to:

ROGER LIDMAN

Dolores & Alan Bartel

JOE GOLDBERG

\*Leslie & Jay Legum

## LIBRARY FUND

### Wishing A Happy Birthday to:

DOLORES BARTEL

Harriet & Gerry Bloom

## RITA COGAN SERVICE TO THE YOUTH FUND

### In Memory of:

JOAN NUSBAUM

\*Bo & June Saks

## RENOVATION FUND

### In Memory of:

ADELE KOSTER

\*Lorie & Roy Beskin

ALAN NUSBAUM

\*Lorie & Roy Beskin

## MILITARY SUPPORT AND OUTREACH

### A Contribution Has Been Given by:

\*Minette & Charles Cooper

### Wishing A Happy Birthday to:

ROBERT SEEHERMAN

Dolores & Alan Bartel

## MOLLY AND GEORGE RADIN ARCHIVES FUND

### In Memory of:

JOAN NUSBAUM

Ruth & Edward Legum

MARY MARGARET PARISER

Ruth & Edward Legum

### In Honor Of 50 Years Of Art Advocacy to:

MINETTE COOPER

\*Carol & Lou Sherman

## FINE ARTS FUND

### Wishing A Happy Birthday to:

HELEN KOLTUN

Lorraine Fink

MIRIAM SEEHERMAN

Lorraine Fink

### In Honor Of Their 50th Anniversary to:

MIMI & WARREN KARESH

Lorraine Fink

## JEFFREY GOODOVE POST CONFIRMATION SCHOLARSHIP FUND

### In Memory of:

ARMOND CAPLAN

\*Harriet & Edward Goodove

RON MENIA

\*Harriet & Edward Goodove

### In Memory Of The Sister of:

LINDA LONGMAN

Harriet & Edward Goodove

## EDWARD J. KESSER RELIGIOUS SCHOOL FUND

### In Memory of:

MARY MARGARET PARISER

\*Bobbie & Jerry Gross

## SISTERHOOD CASSEROLES "FORKIDS"

### A Contribution Has Been Given by:

\*Dolores & Alan Bartel

\*denotes gift of \$25 or more

# THE CARING COMMITTEE

As the Caring Committee extends its reach both within our Temple family and in the greater community, we strive to improve the lives of those around us. This month, we are going to provide Holiday meals for the 25 students we currently sponsor at Chesterfield Academy Elementary School with our bi-weekly Feed a Child program. We are conducting a Food Drive ONLY THROUGH DECEMBER 6! Our goal is to fill 25 boxes with everything these families will need to be able to enjoy a delicious Holiday meal. There is a bin in the entry hall for your donated items. As always, we need your help to make this successful!

## "Give 25" Holiday Food Basket Drive for 25 Chesterfield Academy students:

Each box will contain:

- A personalized greeting card made by Religious School students
- \$10 gift card to Walmart
- frozen turkey for 4-6 people
- large aluminum baking pan
- canned sweet potatoes
- 2 canned vegetables
- 2 canned fruit
- rice
- stuffing mix
- cranberry sauce
- canned or packaged gravy
- cornbread mix
- packaged cookies
- brownie mix

**GIVE 25** THE OST CARING COMMITTEE PRESENTS THE  
*Holiday Food Basket Drive*  
to benefit children and their families from Chesterfield Academy Elementary School in Norfolk

Help families in our community by donating food items that will be assembled into holiday baskets and given to needy children.

Let's give 25 families the gift of a holiday meal. Simply drop off items from the list at the Temple by December 6. Monetary gifts will also be accepted and used for purchasing basket items. Please help with this meaningful Mitzvah!

**NEEDED BASKET ITEMS:**  
Our Goal is 25 of each item  
\$10 Wal-Mart Giftcard  
Frozen Turkey (4-6 people)  
Large Aluminum Baking Pan  
Canned Sweet Potatoes  
2 Canned Vegetables  
2 Canned Fruit  
Rice  
Stuffing Mix  
Cranberry Sauce  
Canned or Packaged Gravy  
Cornbread Mix  
Instant Mashed Potatoes  
Packaged Cookies  
Brownie Mix

Bring items to the Temple by  
December 6, 2013



Food for the "Feed A Child" program arrives at Chesterfield Academy Elementary School

## Caring Committee's December activities:

**Friday, December 6:** FOOD DRIVE ENDS!

**Sunday, December 8:** 7:00-9:00 a.m., OASIS Breakfast

**Sunday, December 8:** 10:00 a.m. – 12:30 p.m., Packing 25 boxes of Holiday food for needy families

**Monday, December 9:** 4:00-6:30 p.m., JCOC Dinner

**Monday, December 30:** 9:30 a.m. - 1:30 p.m., OST "Warm Hearts" Soup Kitchen

**Sunday, January 5, 2014:** 9:00-11:00 a.m., Feed a Child food packing

Please give an hour or two for any or all of these activities. It will make a difference in someone's life ... maybe yours!

Sincerely,

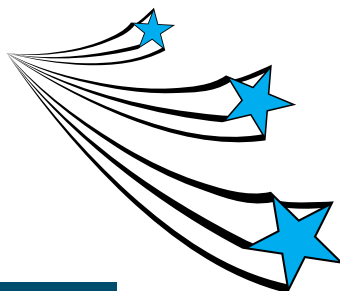
Ingeresa Friedman, *Caring Committee Co-Chair*  
287-9492, [ingeresa@aol.com](mailto:ingeresa@aol.com)

Dorianne Villani, *Caring Committee Co-Chair*  
301-6477, [dvillani@cox.net](mailto:dvillani@cox.net)

## HAPPY 3<sup>RD</sup> BIRTHDAY TO OUR OST SOUP KITCHEN!

Our next meal will be Monday,  
December 30, starting at 9:30 a.m.

Dorianne Villani  
*Soup Kitchen Chair*  
[dvillani@cox.net](mailto:dvillani@cox.net) 301-6477



**OST Soup Kitchen**  
hot meals, warm hearts

Thank You  
to the December  
"Warm Hearts" Soup Kitchen  
Meal Sponsor:  
**Erle Marie & Bob  
Latimer**

SUN.	MON.	TUES.	WED.	THUR.	FRI.	SAT.
1	2	3 12:30 p.m. Executive Committee Mtg. 4:00 p.m. House Committee Mtg. 7:00 p.m. Torah Study	4 12:15 p.m. Special Needs & Security Committee Mtg.	5	6 6:30 p.m. Kabbalat Shabbat Services	7 9:00 a.m. Torah Study 10:30 a.m. Shabbat Services
8 8:45 a.m. Hebrew School 9:00 a.m. Sisterhood Trip 10:00 a.m. Religious School, Confirmation, Intro to Judaism 11:45 a.m. Religious School Committee Mtg.	9 4:00 p.m. JCOC Dinner	10 7:00 p.m. Torah Study	11	12	13 Casseroles ForKids Pickup 6:30 p.m. Shabbat Services	14 9:00 a.m. Torah Study 10:30 a.m. Shabbat Services
15 8:45 a.m. Hebrew School 10:00 a.m. Religious School, Confirmation 11:15 a.m. Judaism 201	16	17 7:00 p.m. Torah Study	18	19 7:00 p.m. Board Mtg.	20 6:30 p.m. Shabbat Services	21 9:00 a.m. Torah Study, Kids & Kiddush 10:30 a.m. Shabbat Services
22	23	24 Temple Office will Close at 1 pm	25 Temple Office Closed	26	27 Casseroles ForKids Pickup 6:30 p.m. Shabbat Services	28 9:00 a.m. Torah Study 10:30 a.m. Shabbat Services
29	30 9:30 a.m. Soup Kitchen	31 Temple Office will Close at 1 pm in observance of New Year's Eve.				

## OST ARCHIVES NEEDS YOUR HELP!

**Do you have any historical photographs, books, brochures or artifacts that you'd like to protect and preserve?**

Consider donating (or even loaning) these items to your Ohel Sholom Temple Archives. The OST Archives collects, preserves, and provides access to a comprehensive record of administrative, religious school, and social life surrounding the Temple membership and Norfolk, VA, from the 1844 beginnings to the present. The collections in the Archives comprise thousands of feet of Temple records and publications, personal and family archives, and related historical materials that include books, paper correspondence, minutes and reports, photographs, audio and video recordings, and electronic files.

When items are donated they are stored in a secure, humidity and temperature controlled space where they will be preserved from the wear and tear of time; photographs can also be loaned to the Archives so that digital scans can be made for our records as well to help us document our rich, Hampton Roads Jewish history.

The OST Archives makes it a top priority to ensure that these valuable artifacts will be around for future generations, to educate, enrich, and invigorate future generations to come.

## The Box Is Back!

Thanks to our congregation's generous contributions of eyeglasses to The Lions Club Sight Program, our overflowing collection box has been emptied of eyeglasses and is now back on its perch.

*"Your eyeglasses donations are recycled and restored by The Lions Club and are provide to those in need throughout Hampton Roads, and The Lions thank you for your support."*





530 Raleigh Avenue, Norfolk, VA 23507

757-625-4295 757-625-3762 (Fax)

www.ohefsholom.org

ADDRESS SERVICE REQUESTED

Non-Profit Org.

US Postage

**PAID**

Norfolk, VA

Permit No. 230

Rosalin Mandelberg, Rabbi

Wally Schachet-Briskin, Cantor

Lawrence A. Forman, *Rabbi Emeritus Ohef Sholom Temple*

Arthur Z. Steinberg, *Rabbi Emeritus Temple Sinai*

### Officers

Linda Fox-Jarvis  
Edward G. Kaufman  
Lisa A. Cohen  
Sharon K. Nusbaum  
Lawrence L. Steingold

**President**  
**First Vice-President**  
**Second Vice-President**  
**Secretary**  
**Treasurer**

### Board of Directors

Deborah Casey  
Peter Crockin  
Barbara Dudley  
Karen Fine  
Tammi Foer  
Sandra Forte-Nickenig  
Leslie Friedman  
Lori Galbraith  
Donald Goldberg  
Martin Goode  
Mark Hecht  
Robin Katz  
Bonnie Kerner  
Andrew Kline  
Steve Kocen

Nichole Kushner  
Leslie Legum  
Robert Liverman  
Robin Mancoll  
Dr. David Metzger  
Alyssa Muhlendorf  
Bert Newfield  
Abbey Pachter  
Alex Pincus  
Rick Rivin  
Paula Russel  
James Schloss  
Ira Steingold  
Dorianne Villani

**OST Sisterhood WRJ/Co-Presidents**  
Gabriele Jiannas & Leslie Legum

**Men's Club President**  
Donald M. Friedman

### Past Presidents

Minette Cooper  
Kim Simon Fink  
Robert C. Goodman, Jr.  
Steven Kayer  
Dr. Howard Kesser  
Edward A. Kramer  
Cathi M. Laderberg  
Natalie G. Levinson  
Bertram S. Nusbaum, Jr.

Charles S. Nusbaum  
Robert C. Nusbaum  
William L. Nusbaum  
Harry Pincus, Jr.  
Kurt M. Rosenbach  
Dr. Robert M. Rubin  
Henry M. Schwan  
Linda Spindel  
Alan D. Stein

### Honorary Directors

Thomas Bachman  
Terri Budman  
Allan Donn  
Morris Fine  
Sandra Forte-Nickenig  
Jay M. Friedman  
Leslie Friedman  
Joan Harrison  
Nancy Hirschler

Edward G. Kaufman  
Dr. Rachelle Luna  
Dr. Meredith Rose  
June Saks  
Miriam Seeherman  
Honorable Louis Sherman  
Louis D. Snyder  
Alan Troy  
Stanley Waranch

## PRIME TIME

### December 2013

### Shabbat Dinner

**Friday, December 13, 2013**

**7:45 p.m.**

Join OST's Prime Time for dinner after Shabbat Services at Freemason Abbey, 209 W.

Freemason St. in Norfolk.

[www.freemasonabbey.com](http://www.freemasonabbey.com)

**Cost: price of meal**

*Please RSVP by Wednesday, December 11*

**RSVP today to:**

Linda Peck, *Director of Congregational Life*

757-625-4295

[linda@ohefsholom.org](mailto:linda@ohefsholom.org)

open to all OST congregants

*Prime Time provides a social venue for Temple members in the 45 to 60 year old age group. Any congregant interested in participating will always be welcome, regardless of age.*