

MISSION STATEMENT:

"My House Shall be Called a House of Prayer For All Peoples"

To provide a spiritual, cultural and educational environment inspired by the highest Reform Jewish values.

Stained Glass Art Attains Quarter Century Mark in New Location

By Richard Rivin

Almost twenty-five years ago, during my term as President of Temple Sinai in Portsmouth, a special physical facility beautification project was completed. This project involved twelve existing wall openings, which admitted light through clear glass, on each side of the eastern wall of the Portsmouth structure. It was based on a previously established Stained Glass Window Fund, and resulted in the addition of custom-designed, stained glass panels, installed in the location of the original twelve clear glass panels, at the sides of our raised sanctuary bima. These stained glass window panels now have a new home within the Sinai Chapel at Ohel Sholom Temple in Norfolk.

Luckily, a local, non-Jewish, female stained glass artist was interested in serving as designer and fabricator for this project. She has since moved out of the Hampton Roads area. With the assistance of Rabbi Steinberg, specific themes were developed for the entire series of 12 panels, related to twelve, annually recurring Jewish events.

A series of design development meetings was held among Rabbi Steinberg, the designer/glass artist, and me to define the parameters and details for the overall project. In a desire to tie the individual stained glass panels together, a consistent use of a rich, blue-colored glass was selected for use as an accent color within each separate glass panel. Once the design concepts were prepared, each panel was approved in sketch form. These sketches were then used to seek individual panel donors, who had their names associated with the theme. The donors funded design completion and glass fabrication. Once installed in its designated wall opening, each stained glass panel was dedicated in a special Temple Sinai Shabbat service, which honored the donor and brought increased attendance to weekly services for many Sabbaths, over a period of two years.

These panels have been removed from the Portsmouth location and are now relocated and backlit on an interior wall in the Sinai Chapel at Ohel Sholom Temple. This reinstallation project was coordinated and managed by the Susan Donn, Ed Lazon, Andrew Fink and Jane Goldman of the Fine Arts & House Committees. **A special service of dedication will be held on Friday, October 18, 2013 at 6:30 PM.**

The windows were dedicated by the following congregants:

Morris H. and Phyllis Rapoport	Louis Brenner
Lee A. and Helen G. Gifford	The Wife, Children & Sisters of Bernard Levitin
The Blachman Family	Mr. and Mrs. Marvin Freifeld
Michael and Barbara Weissman	Theodore Bonk & Richard Rivin
Bernard & Zelma Rivin	Shirley Weiner
The Ostroff Family	
Dr. J.D. Kress	



Sinai Chapel Stained Glass Panels

**Panels will be dedicated on Friday,
October 18 at 6:30 pm.**

What's Inside:

Clergy Corner	2	Sisterhood	5	Caring Committee	8	Birthdays & Yahrzeits	12
Worship	3	Men's Club	5	MSOC	9	Social Events	13
Condolences & Congratulations	3	Adult Learning	6	Mazel Tov	10	Eternal Light Society	14
President's Report	4	Religious School	7	Donations	11	Calendar	15

OHEF SHOLOM TEMPLE

530 Raleigh Avenue
Norfolk, VA 23507
Phone: (757) 625-4295
Fax: (757) 625-3762
www.ohefsholom.org

CLERGY CORNER

CLERGY

Rabbi

Rosalin Mandelberg
rabbi@ohefsholom.org

Cantor

Wally Schachet-Briskin
cantorwally@ohefsholom.org

Rabbi Emeritus Ohef Sholom

Lawrence Forman
rabbiforman@ohefsholom.org

Rabbi Emeritus Temple Sinai

Arthur Z. Steinberg
rabbisteinberg@ohefsholom.org

STAFF

Administrator

Gail W. Bachman
gail@ohefsholom.org

Director of Congregational Life (DCL)

Linda Peck
linda@ohefsholom.org

Music Director

Charles Woodward
chuck@ohefsholom.org

Temple Educator

Kitty Wolf
kitty@ohefsholom.org

Administrative Assistant

Sara Bachman
sara@ohefsholom.org

Financial Assistant

Kari Amual
kari@ohefsholom.org

Graphic Designer

Kristine Wayman
kristine@ohefsholom.org

LAY LEADER

President

Linda Fox-Jarvis
president@ohefsholom.org



A Word from Rabbi Steinberg

The Jewish Calendar is very ancient. In early Jewish history, we were shepherds living in desert areas where, due to the heat of the day, we fed our flocks and traveled at night. Our calendar, therefore, was based upon the phases of the moon and is called a lunar calendar. According to this system, each month is 29 ½ days long. Since a day cannot be divided in half, some months were given 29 days and others 30 days.

When our history shifted to settlements in the land of Canaan, we became an agrarian people and understood the benefits of basing growing seasons upon the sojourns of the sun and not of the moon.

Later studies indicated that the solar year is slightly more than eleven days longer than the lunar year.

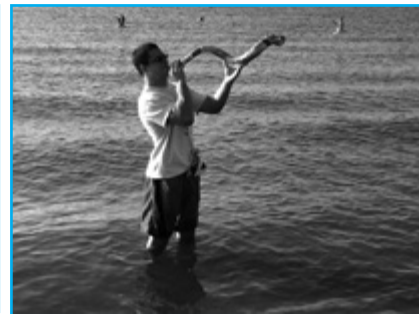
While our ancestors did not understand such intercalations, they did realize that before too long, using the lunar calendar would move the celebrations of Spring holidays into the middle of Winter and Fall festivals into the Summer.

Recognizing that the successful farming of crops depended on the seasons according to the sun, our leaders adjusted the lunar calendar to fit the seasonal cycle. Instead of adding one day every four years, as per our present calendar, they added an entire month, Adar II, seven times during the period of every nineteen years.

The Jewish Calendar is very precise but always somewhat out of sync with the general calendar resulting, for this year of 2013, with Rosh Hashanah beginning on the evening of September 4. The last time this happened was in 1899 and it won't be until 2089 before Rosh Hashanah comes this early again.

In a month from the time you read this article, another strange anomaly will occur; the first night of Chanukah and Thanksgiving are on the same day. This is the first time that it has happened since Lincoln originally established Thanksgiving in 1863. The next time this occurs will be in 77,798 years. A long time to wait before enjoying latkes with turkey again.

TASHLICH 2013•5774



CONGRATULATIONS

Congratulations to Amy P. Nisenson for receiving The Virginia Center for Inclusive Communities' Humanitarian Award (Richmond Chapter). Amy is the daughter of Judy Petock and the late Jerry Petock.

Congratulations to Shari Dozoretz Friedman and Dan Schieble in honor of their wedding on July 13, 2013. The proud parents are Marilyn & Stuart Buxbaum, Ron & Beth Dozoretz, and Maryann Schieble Harpster.

Congratulations to Nancy & David Embree on the birth of their twin grandchildren, Theo Jack Schwartz and Gemma Riley Schwartz, who were born on August 6, 2013 to Alyssa & Dan Schwartz.

Congratulations to Richard & Leah Waitzer on the birth of their granddaughter, Paige Emerson Waitzer, born September 7, 2013, to Scott & Debbie Waitzer.

Congratulations to Dr. Roberto & Dr. Rachelle Luna on the birth of their granddaughter Zara who was born on August 15, 2013. Proud parents are Rabbi Nicole Luna & Dr. Joe Bord.

CONDOLENCES

Ohef Sholom remembers with deepest affection the following beloved family members and friends:

Donna Kootner, on the loss of her husband, *Alan Kootner*.

Helen Koltun, on the loss of her husband, *David Koltun*.

Terri Budman, on the loss of her stepfather, *David Koltun*.

Sara Bachman, on the loss of her grandmother, *Shari Weiss*.

Norma Flax, on the loss of her brother, *Ira Ginsburg*.



LOOKING FOR A FEW SMILING FACES!



We need volunteers to greet congregants and guests, and hand out prayer books at Friday night services. If you are interested in helping out on a Friday night, please email Margaret Sawyer at Margaret.Sawyer@pilotonline.com.

Did you know...

The Union for Reform Judaism's 2013 Biennial will take place from December 11-15 in sunny San Diego, California.

The Biennial is where Reform Jews gather to learn, pray, share ideas, dance and sing, hear from inspiring guest speakers, reunite with old friends, make new connections, and reimagine Jewish life. It is North America's largest Jewish gathering!

Let us know if you have airline "miles" to donate so you can help someone get to San Diego for the biennial.

Visit <http://urjbiennial.zerista.com/> to learn more.



WORSHIP

Torah Portions for October

October 4 Tishri 30
Shabbat Services - 6:30 p.m.
Parasha: Noach
Genesis 6:9-11:32
Haftarah: Isaiah 66:1-13:23

October 11 Cheshvan 7
Shabbat Services - 6:30 p.m.
Parasha: Lech L'cha
Genesis 12:1-17:27
Haftarah: Isaiah 40:27-41:16

October 18 Cheshvan 14
Shabbat Dinner - 6:30 p.m.
Shabbat Services - 7:30 p.m.
Parasha: Vayeira
Genesis 18:1- 22:24
Haftarah: II Kings 4:1-37

October 25 Cheshvan 21
Shabbat Services - 6:30
Parasha: Chayei Sarah
Genesis 23:1-25:18
Haftarah: I Kings 1:1-31

Braille prayerbooks, as well as headsets for those in need of audio assistance at services, are available upon request.

REMINDER

Submissions for the **December** bulletin must be received by **November 1**



Dear OST Family,

Each year I look forward to a particular prayer in the Yom Kippur service that has great meaning to me. The words in the silent confession on page 325 of the Gates of Repentance. To quote a portion of this prayer:

I have failed in many ways to live up to my potentialities and Your demands. Not that You expect the impossible. You do not ask me: "Why have you not been great as Moses?" You do ask me: "Why have you not been yourself? Why have you not been true to the best in you?"

It then continues: *I will not lay the blame on others, though they may have wronged me, nor on circumstances, though they may have been difficult. The fault lies mainly in myself.*

Too often I have failed to make the required effort to do my work conscientiously, to give my full attention to those who needed me, to speak the kindly word, to do the generous deed, to express my concern for my friends.

I have not loved enough, not even those closest to me..... I have neglected my duties to my community.

It continues on, but each year, this passage makes me take stock of myself and think about the ways I can be a better person, a better wife, mother, daughter, sister, business associate, Hampton Roads citizen, Jew, and Ohef Sholom Temple member. How can I be a better person.....How can I realize the "divine image" in me. Part of the answer is in this prayer where it says to seek God more earnestly, to submit myself to God's will; to say to God – here I am, mold me, guide me, command me, use me, let me be Your co-worker, an instrument of Your redemptive purpose.

I ask you to join me in seeking God more earnestly, in being His co-worker and instrument. Join me in working to make our world a better place and in making Ohef Sholom Temple a better place. Join me in prayer on Friday nights, in celebrating B'nai Mitzvahs on Saturday mornings, in celebrating the Jewish holidays. Join another OST committee, join the adult B'nai Mitzvah Class, join our wonderful choir. Help us welcome strangers to our temple by helping in the monthly Soup Kitchen and Oasis, volunteering for NEST and JCOC, volunteering to be a greeter at Friday night services. Help us provide services and support to our temple members both through your physical presence and through your financial support with dues and donations. By connecting here, by being part of the community, by supporting Ohef Sholom, your life will be enriched and you will be enriching and supporting Ohef Sholom Temple for now and for the future.

Linda FJ
President

THANK YOU FINE ARTS & HOUSE COMMITTEES!

Temple Sinai Stained Glass Windows - Worth the Wait!

Thanks to the talent and support of the Fine Arts Committee, House Committee and Past President Eddie Kramer, the magnificent installation of the Temple Sinai stained glass windows in the Sinai Chapel exceeds all expectation.

I am sure that I speak for every member of Temple Sinai in expressing our gratitude for the graciousness shown by the OST Board and Membership every step of the way in this merger.

While it is comforting to walk into OST and be surrounded by familiar objects, it is so much more important that we all feel that OST members have made us welcome in every way. We have all been enriched by this experience.

Gratefully,

Bonnie Kerner
Past President
Temple Sinai



FROM THE SISTERHOOD

The High Holy Days, our time for prayer, repentance and introspection, are behind us, and we have begun our busy lives of school activities and adult education, already thinking of Thanksgiving and Hanukkah. Where does the time go?

Sisterhood has a full calendar this fall.

October 4 and 5 will be our Shabbaton, with Rabbi Roz as our leader and **Rabbi Connie Golden** as chair. We are very excited about this weekend, learning and bonding, and *"Finding our Rainbow."*

Wednesday, October 23, will be our first of, hopefully, many Nosh and Knowledge events. The theme is Breast Cancer Awareness, as October is Breast Cancer month. For more information about this luncheon and discussion, chaired by **Marsha Moody and Celia Friedman**, see our ad to the right.

Marsha also wants to remind everybody that our lobby book sale is still going strong. Pick up a book and leave a book (or two). Pay for this at the office.

Mark your calendars for our **Annual Chanukah Dinner, chaired by Nichole Kushner, with Anne Kramer and Dorianne Villani.** Because Hanukkah is so early this year, our annual dinner will be on **November 22**, the Friday before Thanksgiving.

Talking of Chanukah and looking for appropriate gifts, as always, remember our very own **Judaica Shop, run by Lisa Cohen.** The shop is **open Thursdays 10-2 and Sundays 9:30-12.** *The Chanukah Shop will be open in the Library from October 31-December 5.*

We desperately need volunteers to help. Please, consider giving a few hours of your time, possibly on a Sunday, while your child is in Religious School. Volunteers receive a discount at the shop.

You have seen the quarterly **Uniongrams.** Taking care of this is a time-consuming job, done so well by **Nancy Lazier and Sandi Advocat.** Please, adhere to the deadlines and while we celebrate so many important milestones, we just cannot honor birthdays.

Sisterhood now has a credit card option on the Temple web page. Dues and program payments may be paid by credit card. If you would like to make a donation, in honor or in memory of someone, send the information to sisterhood@ohefsholom.org

Get started on "finding" items for next spring's **Rummage Sale; date is March 9, 2014.**

Yours in Sisterhood,

Gabriele Jiannas
Sisterhood Co-President

Leslie Legum
Sisterhood Co-President

The Ohef Sholom Temple Sisterhood presents

Nosh & Knowledge

at Noon



Wednesday, October 23, 2013
12:00 pm - 1:30 pm
Ohef Sholom Temple
530 Raleigh Avenue, Norfolk, VA 23507

**Be Aware, Be Informed,
Be Healthy About Breast Cancer**

Please join us together with the Tidewater affiliate of the Susan G. Komen Foundation for a Breast Cancer Awareness lunch session facilitated by a professional panel.

Lunch will be provided by the OST Sisterhood
OST Sisterhood members: \$15.00 | Non Members: \$18

October is national Breast Cancer Awareness Month, an annual campaign dedicated to increasing awareness and educating men and women on the importance of early detection. In their lifetime, 1 in 8 women and 1 in 40 men will be diagnosed with breast cancer.

RSVPs are requested by October 18, 2013
Please RSVP to reservations@ohefsholom.org
For questions please call the Temple at (757)625-4295

THE MEN'S CLUB

With the end of summer and the start of a new year, there are many opportunities to become involved in Men's Club this coming year. **Attend a monthly meeting - the next one is scheduled for Wednesday, October 2 at 6:00 pm.** We serve free pizza, salad and soda, followed by the meeting usually lasting about an hour. Participate in preparing a Shabbat dinner (cooking skills are not essential) for congregants and their guests on Friday, October 18. Dinner will be served at 6:30 pm followed by services in Sinai Chapel. On Sunday, October 20, we'll hold another Carpool Café at 10:30 a.m. when Rabbi Connie Golden will speak on "Jewish Central Europe." The Men's Club consistently provides a service to the Temple and the community. Come join us in the kitchen as we prepare food and make new friends.

Don Friedman, Men's Club President
mensclub@ohefsholom.org, 553-6317

UPCOMING ADULT LEARNING SCHEDULE

October 13

Learn to Read Hebrew-Level 19:00 a.m.

With Rabbi Steinberg - This course consists of learning basic Hebrew words and skills. Upon completion of this five week course, students will have learned the basic skills for understanding Hebrew prayers and words.

Registration Deadline: October 4

Register online at:

www.ohefsholom.org/study/adult-learning/ltrhebrew

Intro to Judaism 10:00 a.m.

"Sukkot/Simchat Torah" with Linda Peck

This course is structured for anyone interested in exploring Judaism—interfaith couples, those considering conversion, and Jews looking for adult-level basics. The fundamentals of Jewish thought and practice are introduced.

Judaism 201 11:15 a.m.

"As a Driven Leaf" with Rabbi Steinberg

In 1939, Rabbi Milton Steinberg wrote a brilliant fictional biography of the distinguished Talmudic Scholar, Elisha ben Abuyah, who became an apostate, abandoning Judaism. This hour will be devoted to a review of the book and a discussion of the world it depicts.

October 17

Lunch & Learn with Rabbi Roz 12:00 p.m.

"The Gay Marriage Debate: What Does Judaism Say?"

This is a great opportunity to spend one lunch hour with your rabbi and learn something about Judaism at the same time. Bring your own lunch, an open mind, a sense of humor, and any interested friends.

Deborah M. Casey's Office

Vandeventer Black LLP

101 W. Main Street • Suite 500 • Norfolk, VA 23510

• Park directly across from the building on Main Street. Parking slips will be validated.

• Upon entering, please use the bank of elevators on the right and proceed to the 5th floor.

October 20

Learn to Read Hebrew-Level 19:00 a.m.

Carpool Café 10:30 a.m.

"Jewish Central Europe" with Rabbi Golden

*Experience a taste of that part of the world where Jews once thrived: Warsaw, Krakow, Bratislava, Budapest, and Prague. Learn how, even after Hitler's attempt to wipe us out, we have left our mark and are close to thriving again.**

October 23

Nosh & Knowledge at Noon 12:00 p.m.

"Be Aware, Be Informed, Be Healthy About Breast Cancer"

Please join us together with the Tidewater affiliate of the Susan G. Komen Foundation for a Breast Cancer Awareness lunch session facilitated by a professional panel.

Lunch will be provided by the OST Sisterhood

OST Sisterhood members: \$15.00 | Non Members: \$18

RSVPs are requested by October 18, 2013

October 27

Learn to Read Hebrew9:00 a.m.

Intro to Judaism 10:00 a.m.

"Shabbat in the Home" with Dr. Rachelle Luna

November 3

Learn to Read Hebrew-Level 19:00 a.m.

For more information on any Adult Learning Activities please call the Temple at 757-625-4295 or email information@ohefsholom.org. RSVPs can be sent to reservations@ohefsholom.org unless otherwise stated.

Every Tuesday at 7:00 p.m. and Saturday at 9:00 a.m. the Adult Education Committee sponsors a Torah Study class.

As of September 24, the Tuesday night group is studying Pirkei Avot.

All are welcome!

Mussar* classes are ongoing. You can receive information on meeting times by contacting the Temple at 625-4295.

*sponsored by the Adult Ed Committee

LIBRARY NEWS

Now that the seasons are changing don't fall behind and remember to stop by your OST Library and enjoy a great book. There are a multitude of different resources on a variety of subjects that range from photography and art to history and philosophy for you to pour through. Your OST Library is open throughout the week during the main office hours. Every Sunday the adult and children's library are staffed during Religious School hours.



Welcome to the 2013/2014 Religious and Hebrew School Faculty!

RELIGIOUS SCHOOL FACULTY

Pre-K.....	Nicole Smith
K.....	Victoria Haring
1.....	David Bachman
2.....	Rachael Trussell
3.....	Debbie Haring
4.....	Shelby Vanak
5.....	Mara Bates
6.....	Lisa Cohn
7.....	Ira Steingold
8.....	Marty Mandelberg
9.....	Brett Trussell
Confirmation.....	Rabbi & Cantor
Judaic Studies.....	Ruth Pano
Hebrew Tutor.....	John Bachman
Music.....	Marilyn Johns
Art.....	Burgess Hodges
.....	Sara Bachman
Hebrew Specialist....	Marnie Waldman
Librarian.....	Gaile Lipp
Technology.....	Brian Bachman
Special Education....	Heather Keller

HEBREW SCHOOL FACULTY

Alef.....	Darah Gold
Bet.....	Marnie Waldman
Gimel.....	John Bachman
.....	David Bachman
Dalet.....	Brian Bachman (with Cantor)

STUDENT ASSISTANTS

Michael Halpern, Dara Alper, Kari Levi, Emily Casey, Sasha Lasakow, Raven Laibstain, Abby Haring, Madeline Budman, Matthew Cooper, Samantha Green, Rebecca Cardiff, Hannah Cooper, Jared Coplon, Alex Landman, Hannah Via, Zachary Snarr, Hannah Galbraith, McKenna Bates, Dani Fiedler, Mallory Weinstein, Geoffrey Robb, John Fohl, Yolaina Dupre, Joshua Bensink, Camille Cooper, Leah Cooper, Tyler Halpern, Rowan Cardiff, Sarah Friedman, Lucie Waldman, Aaron Bensink, Deni Budman, Cameron Coplon, Ayden Cohn, Zach Maiden, Anna Salasky, Kayanna Shanker, Jentry Whitehurst and Jason Young.

Welcome New B'nai Mitzvah Students!

On October 12, 2013, the following students and their parents will begin a series of special B'nai Mitzvah classes, continuing their preparation toward celebrating this important Jewish Life Cycle event:

Hannah Abraham
Brianna Arluk
Kasey Cooper
Brandon Howe
Naomei Lidman

Reann and Travis Nichols
Riley Parker
Max Steingold
Tessa Stern

WHAT'S UP at The Religious School Committee?

Religious School Committee 2013-2014

Karen Fine, Chair - Board Member, Religious School Parent
Kitty Wolf - Temple Educator

Rabbi Roz

Rabbi Steinberg

Cantor Wally

Linda Fox-Jarvis - Board President

Eddie Kramer - Immediate Past Board President

Anne Kramer - Past Religious School Committee Chair,
Board Member, Religious School Parent

Terri Budman - Honorary Board Member, Past Religious
School Committee Chair

Marty Mandelberg - Educator, Religious School Teacher

Mara Bates - Religious School Teacher, Religious School Parent
& Volunteer

Alyson Morrissey - Religious School Parent & Volunteer

Gail Bachman - Past Religious School Principal,
Temple Administrator

Tammi Foer - Board Member, Religious School Parent

Marnie Waldman - Religious School Teacher,
Religious School Parent

Lisa Cohn - Religious School Teacher, Religious School Parent

Besianne Maiden - Religious School Parent,
Past Board Member

Amy & Eliot Weinstein - OSTY Advisors

Madeleine Budman - OSTY President

RELIGIOUS SCHOOL COMMITTEE MISSION STATEMENT:

Ohef Sholom Temple Religious School is committed to raising Reform Jews whose identity is firmly grounded in Torah and Jewish texts and connected to our history, culture, Israel, language and traditions.

OUR GOALS:

Through education and exposure our students will become comfortable with rituals and prayer and eager to explore and develop their own spirituality and personal concepts of God. We strive to produce the combination of a Jewish mind and heart, which will lead to participation in *Tikkun Olam*, *Tzedakah* and *G'milut Hasadim* (repairing the world, righteous giving and acts of loving kindness). We value Jewish education as a life-long process. We seek to provide resources and exposure opportunities for living a Jewish life at home and within the greater community because we believe that family and community involvement are critical to every child's growth as a Jew. We recognize and provide support to students and teachers with learning differences. Our learning community celebrates the joy and beauty of Judaism in a nurturing and respectful environment, which promotes a sense of *mishpacha* (family) within the classroom, the Temple, and the global Jewish community.

Endorsed by OST Board, July 2013

**The next Religious School Committee meeting is
October 27 at 11:45 am.**

THE CARING COMMITTEE

The OST Caring Committee is YOUR caring committee. We reach out with loving kindness to our fellow congregants and to our greater community. We celebrate congregants' joyous life cycle events by sending them cards or gifts; we comfort the sick and bereaved with cards, visits or meals; we care for the homeless with meals, shelter, and fellowship; we feed our neighbors' hungry children on weekends when they do not have access to school-provided meals. This coming year, we are broadening our reach and inviting you to join us and bring your ideas for new projects. Share with us the causes that you care about, and we will come together to better our world. As you reflect on your "New Year's" resolutions, please come to the next Caring Committee meeting on Wednesday, October 9 at 7:00 p.m., and bring your enthusiasm and commitment to tikkun olam. If you can't attend the meeting, we welcome your call or email with your comments or ideas for future projects.

October Caring Committee Calendar:

Wednesday, October 9, 7:00 P.M. - Caring Committee meeting

Sunday, October 13, 7:00 – 9:00 A.M. – Oasis Social Ministry breakfast meal

Monday, October 28, 9:30 A.M. – 1:30 P.M. – OST Soup Kitchen

TBD – School backpack food packing (watch "As the Temple Turns" for dates)

Sincerely,

Ingeresa Friedman, *Caring Committee Co-Chair*
287-9492, ingeresa@aol.com

Dorianne Villani, *Caring Committee Co-Chair*
301-6477, dvillani@cox.net



Are you looking for a way to be involved with our OST Soup Kitchen even though you are not available on the last Monday of the month? Our Soup Kitchen has evolved into so much more than just the feeding of hungry people. Thanks to the limitless generosity of our congregants, we distribute dozens of items to comfort and ease the lives of our guests. No one leaves our Soup Kitchen with empty stomachs or hands. While you are shopping this Fall or cleaning out your closets, please think of our Soup Kitchen patrons who greatly appreciate your in-kind donations. We take these things for granted, but you should see the smiles we get when we give a washcloth to someone who doesn't have one! Below is a list of what we currently hand out, and with your on going donations and kindness, we will be able to continue. If you have any ideas of additional items that you would like to share with our guests, please send them to me. There is a bin in the entry hall marked Soup Kitchen to collect your donations.

Our next meal will be Monday, October 28, starting at 9:30 a.m. Thank you to our meal sponsor, Marty Mandelberg, who will be using his sponsorship experience as a "teachable moment" with his 8th grade Religious School class.

Thank you for your giving spirit!

Dorianne Villani
Soup Kitchen Chair
dvillani@cox.net 301-6477

TOILETRIES TABLE:

Shampoo
Body or hand lotion
Regular size soap
Toothbrush
Toothpaste
Deodorant
Razor - *men and women*
Comb
Hand sanitizer
Sewing kit
Little Kleenex package
Chapstick

CLOTHES TABLE:

In-season shirts, sweaters, jeans
- *good condition, especially larger sizes*
New or gently-used tennis shoes & boots
- *especially larger sizes. We take individual requests from our patrons for their size.*
New socks - *men and women*
New underclothes - *men and women*
New or gently used coats
- *Coat Drive coming in December*

PERSONAL ARTICLES TABLE:

Washcloths
- *we give one to every person at our meal!*
Backpacks
Books
Reading glasses - *gently-used*
Umbrellas

SNACK TABLE (given upon departure):

Individually-wrapped snacks
- cereal or granola bars, peanut butter crackers, etc.
Water bottles



HOT MEALS & HOMEWORK PROGRAM For ForKids

Sponsored by Ohef Sholom Temple Sisterhood

As most of you know, ForKids is a non-profit organization whose mission is "to break the cycle of homelessness and poverty for families and children". They provide temporary and permanent housing for homeless people. The ForKids "Hot Meals and Homework" program provides tutoring for kids and sends a meal home for their families. According to ForKids, 89% of children participating in the program advance to the next grade.

This year, OSTs has once again confirmed with ForKids that we intend to provide a minimum of 7 entrée casseroles (more casseroles are welcomed) every two weeks. ForKids will pick up the meals from OST on designated pick-up dates.

Please volunteer to provide an entrée casserole as often as your schedule allows. For example, you may sign up to participate once a month, or every other month. Every casserole makes a difference! We are also accepting monetary donations! This resource will allow us to have cooking days at temple! (Store bought casseroles are also welcome for those of us who do not cook!)

Specifications:

Bring the casserole in a 9"x 13" aluminum disposable pan. We request it feeds 6 – 4 people. Pans should be well wrapped for freezing.

Please label pan with "ForKids", the recipe (or ingredients for allergy reasons), cooking or warm-up instructions, date prepared and "Ohef Sholom Temple."

Bring to OST for freezing in the designated freezer prior to the pick-up date. Please check with Sara, Gail Bachman or other office staff when you bring your meal to OST.

Dates for 2013 and 2014:

September 20, October 16 & 30, November 13 & 27, December 13 & 27, January 15 & 29, February 12 & 26, March 12 & 26, April 16 & 20, May 14 & 20, June 9. END OF SCHOOL!

THANK YOU FOR SUPPORTING HOT MEALS
& HOMEWORK AND FORKIDS!

Sandi Levi
OST Sisterhood Coordinator
Email: ostsforkids@hotmail.com
Or call: 435-6978 (cell)



MILITARY SUPPORT & OUTREACH COMMITTEE

This year the MSOC in conjunction with the OST Sunday school will be collecting items for the 2nd annual Chanukah care packages. Last year 9 care packages (each package contained enough items for 3 persons) were sent to deployed Jewish sailors. Collections will be ongoing until November 1, 2013, when we'll package up donated items and ship them off. Additional information on suggested donations will be available in the Temple lobby and upcoming "As the Temple Turns."

The MSOC can now accept checks or online donations through the Temple's web site. Please consider a tax-deductible donation for any amount to honor a loved one's service, a retirement or any remembrance honoring special holidays such as Memorial Day, Veterans Day, Flag Day, Armed Forces Day or Pearl Harbor Day, just to name a few.

To all our active duty and veterans, thank you for your sacrifices and service to our Country.

Don Friedman, *Chairman*

2013 CHANUKAH CARE PACKAGES FOR TROOPS

Support our Deployed Troops for Chanukah!

The MSOC is collecting items for Chanukah Care Packages to be mailed to our deployed troops.

Please bring unwrapped items to OST by October 28, 2013

Suggested Items:

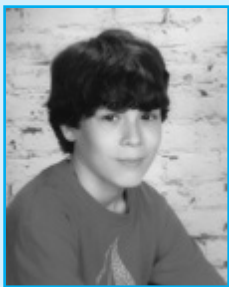
Crossword Puzzles (soft cover only)
Sudoku Puzzles (soft cover only)
Paperback Books
Amazon Gift Cards
#2 Pencils with Erasers
DVD Movies (gently used or new)
Alkaline Batteries (AA or AAA 4 packs)
Mini Maglite Flashlight (2 cell AA)
Baby/Wet Wipes (travel size)
Canned Nuts (single-serve)

Powdered Drink Mix (Crystal Light single-serve)
Small Sewing Kits
Beef Jerky (single-serve)
Chanukah Cookies (boxed or packaged well)
Fruit Chews
Breath Mints
Emery Boards
AT&T Prepaid International Phone Cards
Cash Donations (helps fund postage)

*Due to extreme weather conditions items like chocolate bars, candy, candles, make-up items such as nail polish, lipstick, and lip gloss are discouraged from being donated.
Flammable items such as matches and lighters cannot be shipped.*

Contact: military@ohefsholom.org | Ohef Sholom Temple | 625-4295





Congratulations to Max Feldman on his upcoming Bar Mitzvah on October 12, 2013

Max is the son of Brian & Terri Feldman, brother of Philip and Erin, grandson of Milton* & Naomi* Bass and Robert & Virginia Campbell.



Congratulations to Hailey Foer on her upcoming Bat Mitzvah on October 19, 2013

Hailey is the daughter of Tammi & Jerry Foer, sister of Lindsey, and granddaughter of Warren & Roz Foer and Michael & Marilyn Chertoff.



Congratulations to Elijah Kohn on his upcoming Bar Mitzvah on October 26, 2013

Elijah is the son of Michael & Teresa Kohn, brother of Isaac, grandson of David & Nina Kohn and Judy & Bert Paschall

* of blessed memory



Energy: The average US home has enough air leaks to equal an open window. Sealing and insulating your home can save you up to 20% on heating and cooling costs, and upwards of 10% on your total energy bill (Energy Star). Find an experienced certified contractor, or follow Energy Star's do-it-yourself guide to sealing and insulating:

http://www.energystar.gov/index.cfm?c=diy.diy_index

Eco-tip provided by GreenFaith: www.greenfaith.org

Improve your personal safety strategies with *Refuse To Be A Victim*® Program. November 3, 2013, 1-5 p.m.



Experts agree that the single most important step toward ensuring your personal safety is making the decision to refuse to be a victim. That means that you must have an overall personal safety strategy in place before you need it.

Through a four-hour seminar you can learn the personal safety tips and techniques you need to avoid dangerous situations and avoid becoming a victim.

Taught by OST's Brian Hirschler

Single \$30; Couples \$50

To register email linda@ohefsholom.org or call 625-4295.

More info at: <http://refuse.nra.org/refuse-to-be-a-victim.aspx>

Kids & Kiddush

Seeing the Beauty in God's Creation

Friday, October 25, 2013, 5 pm

Bring your family for food & crafts along with a brief service & songs led by Rabbi Roz & Cantor Wally.

Appropriate for 3rd grade & younger.
Infants & older siblings welcome!

For more information & to RSVP please contact Kitty Wolf
kitty@ohefsholom.org ☆ 757-625-4295 ☆ www.ohefsholom.org

This year our theme is "God's Paintbrush," based on the award-winning book by Rabbi Sandy Sasso. We will explore together the many ways we can encounter God and celebrate God's creations.

5:00 - Pizza
(\$10 per family)
5:30 - Service
6:00 - Family Activity

Bring your child, "pick up a brush" and "paint" with us!

WE APPRECIATE THE THOUGHTFULNESS OF THOSE WHO SUPPORT OST

by remembering and honoring their friends and loved ones through their generous contributions

OHEF SHOLOM TEMPLE FUND

In Memory of:

IRENE COHEN
Alice Buxbaum
DAVID KOLTUN
*Vivian Forman
*Jane & Lenny Frieden
*Bobbie & Bernie Lublin
Arlene & Jack Rephan

Wishing A Speedy Recovery to:

STANLEY PECK
Alice Buxbaum

RABBI MANDELBERG'S DISCRETIONARY FUND

In Honor Of Becoming Grandparents (X2) to:

NANCY & DAVID EMBREE
Marsha & Steve Goldstein

With Appreciation to:

RABBI ROSALIN MANDELBERG
*Frankie & Edward Ostroff

Wishing A Speedy Recovery to:

ALAN TROY
*Nanci & Myron Glassman

Wishing A Happy New Year to:

RABBI ROSALIN MANDELBERG
*Nancy Jacobson

CANTOR WALLY SCHACHET-BRISKIN'S DISCRETIONARY FUND

Wishing A Happy New Year to:

CANTOR WALLY SCHACHET-BRISKIN
*Nancy Jacobson

SISTERHOOD FLORAL FUND

In Memory of:

ETHEL BASS
Marilyn & Stuart Buxbaum
DOROTHY FLAX
Gloria & Leo Simon
MORRIS GUTTERMAN
*Judy Gutterman
JOHN BENNETT JACOBSON
*Nancy Jacobson
FLORENCE KRAMER
*Anne & Eddie Kramer
WENDY KRAUS
*Edward Kraus
HENRY LONGMAN
*Lyla & Bruce Longman
JOYCE MCCARTAN
*Diana & Charles Lisner
GERRY MENDELSON
*Marilyn Mendelson
LILLIAN D. MERVIS
*Debra Mervis Keeling
ALEXANDER BENJAMIN MIZROCH
*Patricia & George Rowland
ROBERT M. WHITE
*Lyla & Bruce Longman
Wishing A Happy Birthday to:
LEE LIVERMAN
Dolores & Alan Bartel

RELIGIOUS SCHOOL RELIEF FUND

In Memory of:

ALBERT KAPLAN
Charlotte & Donald Corey
DAVID KOLTUN
Gail & Tom Bachman
*Alice Buxbaum
*Charlotte & Donald Corey
*Susan & Marty Einhorn
*Lorraine Fleder
Leslie & Jay Legum
Carole & Stanley Sacks
Ada Schewel Salsbury

Wishing A Speedy Recovery to:

DOLORES BARTEL
Trudy & Gil Friedman
ALEX BERKOWITZ
Arlene & Allan Zeno
ALAN TROY
Gail & Tom Bachman

In Honor Of The Birth Of Your Granddaughter, Zara, to:

RACHELLE & ROBERTO LUNA
*Rita Weiss

Wishing A Happy 80th Birthday to:

MIRIAM SEEHERMAN
*Dolores & Alan Bartel
*Paula & Skip Goode
*JoAnn & Buzzy Hofheimer
*Judy & Burton Jaffe

Wishing A Happy Birthday to:

MARTY EINHORN
Trudy & Gil Friedman
SUSAN EINHORN
Trudy & Gil Friedman

A Donation Has Been Given by:

*Diane & Harvey Aftel

CHARLES WOODWARD MUSIC FUND

In Memory of:

IRA GINSBURG
Betty & Irwin Sacks
DAVID KOLTUN
June & Bo Saks
ALAN KOOTNER
Betty & Irwin Sacks
ALAN NUSBAUM
*Castle Craddock
In Memory Of The Aunt of:
PHILIP ROVNER
*Joan Dalis
In Honor of:
ARLENE & HOWARD KESSER
*Castle Craddock
SHARON, BRUCE, JODI, KEVIN
& DAN LADERBERG
*Castle Craddock
PAM & DAN SNYDER
*Castle Craddock

Wishing A Speedy Recovery to:

DOLORES BARTEL
Harriet & Gerry Bloom
Marilyn & Stuart Buxbaum
DAN SONENSHINE
*Minette & Charles Cooper

Wishing A Happy 80th Birthday to:

HELEN KOLTUN
Arlene & Jack Rephan
MIRIAM SEEHERMAN
Dolores & Alan Bartel

In Honor of the Birth of Your Granddaughter, Zara, to:

RACHELLE & ROBERTO LUNA
Betty & Irwin Sacks

Wishing A Happy New Year to:

CHUCK WOODWARD
*Nancy Jacobson

With Appreciation For His Leadership

During High Holy Days to:

CHUCK WOODWARD
*Jeanette & Donald Friedman

OHEF SHOLOM FOUNDATION FUND

In Memory of:

DAVID KOLTUN
*Susan Horton
*Rose & Kurt Rosenbach
Wishing A Happy Birthday to:
EVELYN ADLER
Lee & Bob Liverman

JOSEPH B. FELDMAN
Lee & Bob Liverman
STEVE KOCEN
Lee & Bob Liverman
MARILYN LEVY
Lee & Bob Liverman
RACHELLE LUNA
Lee & Bob Liverman
MARSHA MOODY
Lee & Bob Liverman
SHARON NUSBAUM
Lee & Bob Liverman
MIRIAM SEEHERMAN
Lee & Bob Liverman
LOUIS SHERMAN
Lee & Bob Liverman
RUTH WASSERMAN
Lee & Bob Liverman

SISTERHOOD

With Appreciation For Uniongrams Sent

In Honor Of Our 25th Anniversary from:

*Dorianne & Dan Villani

With Appreciation For Uniongrams Sent

In Honor Of Our 50th Anniversary from:

Arlene & Allan Zeno

In Honor of Your New Sisterhood

Presidency to:

GABRIELE JIANNAS & LESLIE LEGUM
Anna Lee Liverman

JEFFREY GOODOVE POST - CONFIRMATION SCHOLARSHIP FUND

In Memory of:

DAVID KOLTUN
Barbara & Jeff Howie
Wishing A Speedy Recovery to:
DOLORES BARTEL
Ellen & Jon Harris
Wishing A Happy Birthday to:
MICHAEL GOODOVE
Dolores & Alan Bartel

CARING COMMITTEE FUND

In Memory of:

DAVID KOLTUN
Carol B. Rosenblatt & Family
Wishing A Happy Birthday to:
BETH JAFFE
Dolores & Alan Bartel

COMMUNITY OUTREACH - SOUP KITCHEN

In Memory of:

DAVID KOLTUN
*Richard I. Miller
Ada Schewel Salsbury
Wishing A Speedy Recovery to:
ALAN TROY
*Laura & Bruce Gilbert
Wishing A Happy Birthday to:
RACHEL ABRAHAM
Dolores & Alan Bartel

A Donation has been Given by:

Baila Waldholtz
Susan Katz
Sysco: Phil Helman
Jeanette & Don Friedman
A Meal has been Sponsored in Memory of:
JOAN MILLER
Richard Miller
A Meal has been Co-Sponsored by:
Diane & Ken Muhlenhof

COMMUNITY OUTREACH - NEST & OASIS

In Memory of:

ABRAHAM SOLTZ
Jim Soltz
SONA SOLTZ
Jim Soltz

MEN'S CLUB FUND

In Memory of:

DAVID KOLTUN
Mark Hecht
Wishing A Speedy Recovery to:
JEANETTE FRIEDMAN
*Mark Hecht

RABBI ARTHUR STEINBERG'S DISCRETIONARY FUND

In Memory of:

DOTTIE JEAN CASH
*Jean & Ira Steingold
THOMAS "MACK" CHERRY
Jean & Ira Steingold
Wishing A Happy New Year to:
RABBI ARTHUR STEINBERG
*Nancy Jacobson

MOLLY AND GEORGE RADIN ARCHIVES FUND

In Memory of:

DAVID KOLTUN
*Ruth & Eddie Legum
*Bertram & Charlie Nusbaum

LIBRARY FUND

In Memory of:

DAVID KOLTUN
Marcia & Henry Schwan
Wishing A Happy Anniversary to:
MARY & JOSEPH ROBBINS
Dolores & Alan Bartel

OSTY

Wishing A Happy Birthday to:

GERALD BLOOM
Dolores & Alan Bartel
Wishing A Happy Anniversary to:
GAIL & WILLIAM BERGER
Dolores & Alan Bartel

SISTERHOOD UNIONGRAM FUND

Wishing A Happy Birthday to:

HARRIET BLOOM
Dolores & Alan Bartel

KANTER-LEVY SCHOLARSHIP FUND

In Memory of:

DAVID KOLTUN
*Pam & Dan Snyder

DUES RELIEF FUND

A Contribution Has Been Given by:

*Eileen Colton

ROSE & CARL LIFLAND FUND

With Appreciation For Being Wonderful

Grandparents to:
BARBARA & ERROL LIFLAND
*The Lifland Family

UNRESTRICTED FUNDS

Wishing A Speedy Recovery to:

PENNY POWDERS
*Diane & Pete Brunk

MILITARY SUPPORT & OUTREACH COMMITTEE

A Donation For The Chanukah Care

Packages Has Been Given to:
DON FRIEDMAN
Leslie H. Friedman

*denotes gift of \$25 or more

OCTOBER BIRTHDAYS

October 2

Raymond Haring
Allena R. Hurwitz

October 3

Charlene Gold
Ellen Harris
Pearl Scherr

October 4

David Abraham
Nina Taubman

October 5

Andrew S. Fink
Vicki E. Goldrich
Bonnie K. Kerner
Reva K. Stein

October 6

Richard Jacobson

October 7

Yossi J. Amuial
Edward B. Ostroff

October 8

Gail S. Berger
Donald L. Corey
Garry Whitehurst

October 9

Monica Cooper
Joseph A. Robbins
Giselle Weinstein

October 10

Barbara Dudley
Nathan Fernandez
Edward G. Kaufman
Lynn G. Sachs
Donna H. Salasky

October 11

Lyla R. Longman
Robin Mancoll

October 12

Neil J. Anglen
Warren Kozak
Elinore Porter
Felice Saks

October 13

Amy Brotman
Morris Fine
Carol K. Hirschler
Stephen Stedman
Michael E. Stredler

October 14

Sally S. Adler
Sara M. Bachman
Michelle M. Glick
Rebecca D. Hirschler
Mark Jacobson
Sheldon Leavitt
Larry Weintraub

October 15

Beth Mancoll
Suzanne Moss
Charles M. Saks

October 16

Harvey L. Aftel
Evelyn Hearst
Cynthia V. Rose

October 17

Edwin S. Epstein
faYe Howe
David M. Katz
Carrie L. Noriega

October 18

Leo J. Cohen
Robert Landman

October 19

Rebecca Anne Dorfman

October 20

Scott Sherman

October 21

Frankie M. Ostroff
Lisa J. Sisler

October 22

Erik S. Cooper
Margarita Simon

October 23

Allan B. Frost
Teresa Kohn

Elizabeth Leeor
Geoffrey Newbill

October 24

Shannon Bartel
Steve Sabatino

October 25

Edward Goodove
Jessica Kramer
Jerry L. Nadler
John D. Newport
Richard M. Waitzer

October 26

Jane Klein Goldman
Cheryl Schaier

October 27

Dorcas Browning
Debi Feinman
Lisa Sands

October 29

Gia M. Ellington
Joseph R. Goldberg
Jo Anne Klein
Jack M. Levi
Adam Lotkin
Dana Lotkin
Stephen E. Nemo

October 30

Lawrence A. Forman
Carol K. Levin
Margie Rashti
Norma Young

October 31

Dolores N. Bartel
Brian Hollings
Michael Kohn
Andra Luke

OCTOBER YAHREZEITS

September 29 – October 5

Henry Bress (USN Capt. Ret)
Anna K. Cohen*
Mary T. Cooper*
Nancy Dougherty
Freda Enevoldsen
Celia Friedberg*
Helen W. Glanzer*
Eugene Forrest Gordman*
Norman Gutterman
Harriet Herman
Harry O. Hindlin
Eleanor B. Hofheimer
Marian Jacobson
Charles L. Kaufman, Sr.
Reva Keeley
Murray Kossman*
Sydel Krakower
Harry H. Levine*
Lee B. Luther
Faye S. Markoff*
Moses Hirsh Mizroch
Alice Moses
Charles Myers
Mary Nemo*
Fredrick Nicholson
Sue Godet Noble
Herman L. Rapoport*
Rebecca Reshefsky
Sadie Ries*
Esther Ring
Dr. Linda Rodriguez
Morton S. Ronick
Charles I. Rostov
Louis Rostov
Elsa Goodman Scott
Mollie Shamitz
James Smith
Louis Snyder*
Jennie Sommers*
Pearl F. Weil
Evelyn Ziehl

October 6 – 12

Simon Alper
Edward Auerbach*
Mary Barker
Ralph Bartel
Horace Maxwell Bear
Rosa T. Brodsky
Margie Buxbaum*

Laura C. Casey*
Dr. Milton A. Clark*
Jacob M. Crockin*
Ben Diamond
Jacob Donsky
Dorothy M. Eggleston
John Ellman
Louis Feldman
Belle Fuchter*
Birdie Paker Gartner*
Ida B. Glick
Sanne Hecht*
Irving Hecht
Joseph B. Hornstein*
Frank Jacobs*
Lee Jaffe
Melissa Jaffe
Mildred Smith Johnson
Wade S. Johnson
Evelyn Kanter*
Alfred Legum
Phillip Leventhal*
Rose Weiser Lobock
Hannah Lubschutz*
Abraham Miller*
Walter R. Rierson
Audrey Sampson
Freda Schloss*
Jack Sheppard*
Zelda Silverman*
Rabbi Raphael Isaiah Sobel*
Virginia Sohmer
Flora Leah Trump
Albert Turner*
Beatrice N. Wachtel
Louis Waldman*
Bernard Wasserman*
Gay B. Wasserman*
Mae Willson

October 13 – 19

Jerome Adler
Julius Barker
Betty Berg
Norman Berlin*
Madeline P. Bohan
Beverly F. Schulman
Harold Cohen
Joseph Cohen
Arlyn Cohn
Mcarthur Colton

Shireen Coran*
Herta Familier
Dorothy Feldman
Morris Fine*
Betty Finkelman
Jeffrey Firoved
Dr. Harry M. Frieden*
Joseph Frumkin
Aaron Ginsberg
Joseph David Gurfein
Elmo C. Harris, Jr.
Harry Harrison, Jr.
Doris Hindlin
Evelyn Hofheimer*
Sadie S. Hofheimer*
Ronald N. Hyman*
Viola Kayer
Rita Zedd Kootner*
Bessie Rose Kruger*
Esther Levin*
Stanley Levy*
Goldie Levy
Rose Lewis
Joseph Lipman*
Esther Cohen Lit*
Hymie Longwater
Stephen Leigh Markman
Edith McDonald
Leonard Moore
Hyman Samuel Posner
Betty Raphael*
Aaron Rashti
Marvin Rathsam
Sally L. Rephan
Herman Romash
Leonard Rosen*
Frieda Rosenbach
Jane Silberman
Jose Simon
Maurice Steingold
Joseph H. Strelitz*
L.E. Ullman Jr.
Ester Umstadter*

October 20 – 26

Margaret F. Baum
Meyer Bazar*
Beatrice Masnikoff
Blumenthal*
Stephen Bonk
Michael Brownstein

Rose Coplon
Mary Allison Davis
Iris Elkins
Andrea Elizabeth Farrell*
Herbert Fried
Alice Friedman
Penny Galbraith
Lee A. Gifford*
Marilyn Levin Goldberg*
Sidney Goldstein*
Esther Goldstein
Belle Goodman*
Sol Gross
Dr. Charles Horton*
Maurice Joo*
Mabel Wasserman Kaufman*
Michael Kayton*
David Laskewitz
John Lefkowitz
Jessie B. Levine*
Sarah Plant Lipman*
Sylvia D. Lisner
I. James London*
Robert Lowenthal*
Wayne Lustig*
Anna May E. Luther
Elsie W. Margolius*
Isidor Margolius*
Henrietta Spagat Nusbaum*
Faith Nusbaum
Alice Pariser
Max M. Rothschild
Rose Morgenstern Sachs*
Tilda Schorr
Faye Schulwolf
Mary D. Tucker
Henry Schloss Van Os
Harry Wachtel
Florence F. Waters
Alex Weinstein

October 27 – November 2

Alfred Alperin
Lemuel Altschul*
Diane Ashinoff*
Leo Ausch
Philip C. Ball
Lillian Bohorad
Baruch Brown
Lillian Brown
Kate S. Clark

Naomi V. Ehrenworth*
Bessie Finkelstein
Morton N. Freedman*
Maurice Garson*
Helen G. Gifford*
Irving Glaser*
Meyer Glazer
Thelma Kayer Goldman
Hattie Goldstone*
Max Guggenheimer*
Roberta B. Hamovit*
Wilma Isay
Bella Grant Jacobs*
Daniel Jameson
Polly Jameson
George M. Kaufman
Hyman Kerner
Neil T. Kinnear III
Rachel Kurtz
Edith L. Laderberg
Lenore Laibstain*
Harry Legum*
Louise R. Leterman*
Fannie Blum Liebman*
Samuel Marcus*
Augusta Marx*
Leona Matlin
Max Meyer
Sylvia Miller
Irving Milrod
Maurice W. Nordlinger*
Alice Norris*
Willis Partridge
Anne Pisone
Samuel Poppel
Dr. James Guy Price*
Lynda A. Reynolds
Kathy Rosenbach*
Belle Koenigsberg Rosenbaum
Kate Rosenberg
Mary Schloss
Jessie Schnitzer
Ben Paul Snyder*
Joseph H. Snyder*
Sol H. Snyder*
Harold Spilka
Sara U. Talley
Sigmund Ullman*
Olga Wadley
Murry Wolfson
Sara Woodson

*denotes memorial plaque

UPCOMING SOCIAL EVENTS



FRIDAY, OCTOBER 18, 2013, 6:30 P.M.

Family Shabbat Dinner

If you haven't been to our Family Shabbat Dinners lately or have never attended one, come join us for a lovely dinner before services. This is a great way to get together with your family, see old friends and make new friends.

\$10 Adults and Children 12 and up. Children Under 12 – Free!

MAKE YOUR RESERVATION TODAY: 625-4295 • reservations@ohefsholom.org

If you would like to be seated with someone, please let us know.

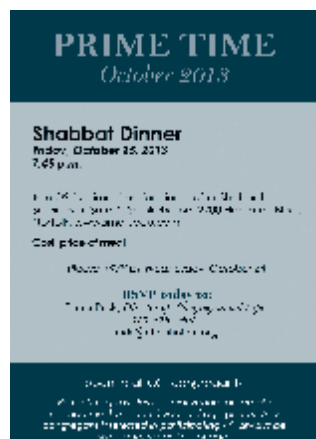


BACK IN YAC

We look forward to seeing old and new friends as we kick off the YAC year on October 19 with a sunset happy hour...we continue the 'good vibrations' with a mix of fun events that are sure to 'rock you!' Put these tunes in rotation for a glimpse into the year ahead...

YAC PLAYLIST: **OCT:** Sittin' on the Dock of the Bay **NOV:** Rock the Casbah **JAN:** Girls Just Wanna Have Fun & Poker Face **MARCH:** We Built this City **MAY:** Hot Fun in the Summer Time **JUNE:** We are the World
So, 'Let's get it started' this year! Dates and more details to follow so look out for our emails and newsletters.

We now have a YAC Facebook page! www.facebook.com/YAC.OST



FRIDAY, OCTOBER 25, 2013, 7:45 P.M.

Prime Time Shabbat Dinner

Join OST's Prime Time for dinner after Shabbat Services at Small's Smokehouse, 2700 Hampton Blvd., Norfolk. www.smallsodu.com

Cost: price of meal

Please RSVP by Wednesday, October 23 to:
Linda Peck, Director of Congregational Life
linda@ohefsholom.org or 757-625-4295

Prime Time provides a social venue for Temple members and is open to all congregants.



WEDNESDAY, OCTOBER 30, 2013, 11:00 A.M.

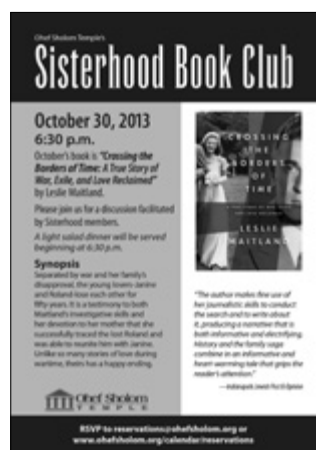
Mavens & Mensches Movie Morning

"Avalon"

A Polish-Jewish family comes to the USA at the beginning of the twentieth century. There, the family and their children try to make themselves a better future in the so-called promised land.

Rabbi Steinberg will briefly comment on the film after we see it together.

Feel free to bring your lunch, or order a box lunch (\$8) when you RSVP to:
linda@ohefsholom.org or 757-625-4295



WEDNESDAY, OCTOBER 30, 2013, 6:30 P.M.

OST's Sisterhood Book Club

October's book is "Crossing the Borders of Time: A True Story of War, Exile, and Love Reclaimed" by Leslie Maitland.

Please join us for a discussion facilitated by Sisterhood members. A light salad dinner will be served beginning at 6:30 p.m.

Synopsis

Separated by war and her family's disapproval, the young lovers-Janine and Roland-lose each other for fifty years. It is a testimony to both Maitland's investigative skills and her devotion to her mother that she successfully traced the lost Roland and was able to reunite him with Janine. Unlike so many stories of love during wartime, theirs has a happy ending.

RSVP to reservations@ohefsholom.org or www.ohefsholom.org/calendar/reservations



Ohef Sholom's Eternal Light Society was established to honor and recognize those individuals and families who have committed financially to aid in underwriting the future of our beloved Temple. These gifts come in the form of both current and deferred gifts.

Just as our parents and grandparents planned for us, so are we obligated to look to the future and ask, "how do we best sustain what has been given to us?" To provide for the future of our Temple, the Temple's Board has set a \$14 million endowment goal.

The **Ohef Sholom Foundation** now exceeds \$10 million of which, 40% is current cash and investments and 60% is represented by testamentary bequests, gifts of IRAs and life insurance policies.

Distributions from the current funds of the **Foundation** will exceed \$150,000 this year in support of numerous Temple programs, scholarships, facility maintenance and daily operations. If these funds were not available, additional dues would be required from our members or Temple activities and programs would need to be curtailed.

Temple members who have joined The Eternal Light Society are listed below. We are truly grateful to these donors for their generosity to help sustain the vitality of our Temple.

We invite you to consider your participation in this effort by joining **The Eternal Light Society** to ensure the future financial well being of our congregation.

Linda Fox- Jarvis
President
Ohef Sholom Temple

Ed Kramer
Co-Chair
Eternal Light Society
620-2787

Charles Nusbaum
Co-Chair
Eternal Light Society
270-8882

Kurt Rosenbach
President
Ohef Sholom Foundation
622-2566

Rob Goodman
Vice-President
Ohef Sholom Foundation
624-3238

Endower of our Future - \$1,000,000+

Matthew and Karen Fine
Andrew and Kim Fink
Edward George Kaufman
Bernard Lubschutz

Guardian of the Sanctuary - \$500,000+

Andrew and Esther Kline

Preserver of our Heritage - \$250,000+

Sarah Cohen Memorial Scholarship Fund
Helen Gifford
William A. Goldback
Edward and Anne Kramer
MiRoMa
Jonathan and Alyssa Muhlendorf

Sustainer of the Torah - \$100,000

Percy Brill
Rita B. Cogan
Marvin W. and Lillian S. Davis
Milton, Fannie and Leslie Friedman Family Foundation
Jane Klein Goldman
Robert and Martha Goodman
Steven and Marilyn Kayer
William and Sharon Nusbaum
Gene and Sharon Ross
Daniel and Helen Sonenshine
Ron and Linda Spindel
Neal and Lisa Stern

Kindler of the Menorah - \$50,000+

Arthur and Renee Diamonstein
Allan and Susan Donn
J. Samuel Goldback
Kaufman Hall Renovation Fund
Debra Mervis-Keeling
Kline/Strelitz Jewish Heritage Fund
Edward & Sarah Levy
Pincus Paul
Kurt and Rose Rosenbach
Philip S. Rovner and Joanne E. Batson

Robert and Judy Rubin
Annette Shore and Milton Kaufman
Samuel and Yetta Spiro-Snyder
Alan and Brenda Stein

Keeper of the Eternal Light – Up to \$50,000

Sylvia B. Altschul
Edmund Baydush
Michael and Paula Blachman
Bonk and Rivin Families
Louis and Isabel G. Brenner
Leo Cohen
Dalis Foundation
Sandy Forte-Nickenig
Rabbi Connie Golden
Jeffrey H. Goodove
Rose Ann Grossman
H. Lee Kanter and Marjorie Kanter Levy
Jerome Kern Library/Media Fund of the Sisterhood
Kerner Family
Edward Kesser
Herman and Lenore Laibstain
Leslie and Jay Legum
Rose and Carl Lifland
Betty Moritz and Bob and Lee Liverman
Rosetta and Carl Marc
Mervis Family
Hallie Cohen Miller
Bert and Sarah Newfield
Fred and Mimi Nicholson
Robert Nusbaum
V.H. and Nancy Nusbaum
Rapoport Family
Rivin Family
The Mollie and Samuel Robbins Scholarship Fund of the Sisterhood
Ada Schewel Salsbury
Louis and Carol Sherman
Robert and Mimi Stein
Ira and Jean Steingold
Robert Stern
Linda and Alan Troy
Waldholtz/Pakula

OCTOBER 2013

SUN.	MON.	TUES.	WED.	THUR.	FRI.	SAT.
		1 12:30 p.m. Executive Committee Mtg. 4:00 p.m. House Committee Mtg. 7:00 p.m. Torah Study	2 6:00 p.m. Men's Club Mtg.	3	4 6:30 p.m. Shabbat Services Sisterhood Shabbaton	5 9:00 a.m. Torah Study 10:30 a.m. Shabbat Service Sisterhood Shabbaton
6 8:45 a.m. Hebrew School 10:00 a.m. Religious School, Confirmation	7	8 7:00 p.m. Torah Study	9 7:00 p.m. Caring Committee Mtg.	10	11 6:30 p.m. Shabbat Services	12 9:00 a.m. Torah Study 10:30 a.m. Bar Mitzvah of Max Feldman
13 8:45 a.m. Hebrew School 9:00 a.m. Learn to Read Hebrew 10:00 a.m. Religious School; Confirmation; Intro to Judaism 11:15 a.m. Judaism 201	14	15 7:00 p.m. Torah Study	16 7:00 p.m. Interfaith Committee Mtg.	17 12:00 p.m. Lunch & Learn with Rabbi Roz 7:00 p.m. Board Mtg.	18 6:30 p.m. Shabbat Dinner 7:30 p.m. Shabbat Services- <i>Dedication of Stained Glass Windows</i>	19 9:00 a.m. Torah Study 10:30 a.m. Bat Mitzvah of Hailey Foer
20 8:45 a.m. Hebrew School 9:00 a.m. Learn to Read Hebrew 10:00 a.m. Religious School 10:30 a.m. Carpool Café	21	22 7:00 p.m. Torah Study	23 12:00 p.m. Nosh & Knowledge at Noon: Breast Cancer Panel	24	25 5:30 p.m. Kids & Kiddush 6:30 p.m. Shabbat Services 7:45 p.m. Prime Time (offsite)	26 9:00 a.m. Torah Study 10:30 a.m. Bar Mitzvah of Elijah Kohn
27 8:45 a.m. Hebrew School 9:00 a.m. Learn to Read Hebrew 10:00 a.m. Religious School; Intro to Judaism; Confirmation 10:00 a.m. Religious School Committee Mtg.	29 9:30 a.m. Soup Kitchen	29 7:00 p.m. Torah Study	30 11:00 a.m. M&M's Movie Morning 6:30 p.m. Sisterhood Book Club	31		

*Learn from yesterday, live for today, hope for tomorrow.
The important thing is to not stop questioning.*

~ Albert Einstein

**Let's plan for tomorrow together,
to take care of the next generation.**

With a few simple questions, we can plan your legacy.



*Create a
Jewish Legacy®*

Join the Eternal Light Society and Create a Jewish Legacy today for Ohel Sholom Temple. Contact Philip S. Rovner with the Tidewater Jewish Foundation at (757) 965-6111, psrovner@ujft.org.



530 Raleigh Avenue, Norfolk, VA 23507
757.625.4295 757.625.3762 (Fax)
www.ohelsholom.org

ADDRESS SERVICE REQUESTED

Non-Profit Org.
US Postage
PAID
Norfolk, VA
Permit No. 230

Rosalin Mandelberg, Rabbi
Wally Schachet-Briskin, Cantor
Lawrence A. Forman, *Rabbi Emeritus Ohel Sholom Temple*
Arthur Z. Steinberg, *Rabbi Emeritus Temple Sinai*

Officers

Linda Fox-Jarvis	President
Edward G. Kaufman	First Vice-President
Lisa A. Cohen	Second Vice-President
Sharon K. Nusbaum	Secretary
Lawrence L. Steingold	Treasurer

Board of Directors

Deborah Casey	Nichole Kushner
Peter Crockin	Leslie Legum
Barbara Dudley	Robert Liverman
Karen Fine	Robin Mancoll
Tammi Foer	Dr. David Metzger
Sandra Forte-Nickenig	Alyssa Muhlendorf
Leslie Friedman	Bert Newfield
Lori Galbraith	Abbey Pachter
Donald Goldberg	Alex Pincus
Mark Hecht	Rick Rivin
Robin Katz	Paula Russel
Bonnie Kerner	James Schloss
Andrew Kline	Ira Steingold
Steve Kocen	Dorianne Villani

OST Sisterhood WRJ/Co-Presidents
Gabriele Jiannas & Leslie Legum

Men's Club President
Donald M. Friedman

Past Presidents

Minette Cooper	Charles S. Nusbaum
Kim Simon Fink	Robert C. Nusbaum
Robert C. Goodman, Jr.	William L. Nusbaum
Steven Kayer	Harry Pincus, Jr.
Dr. Howard Kesser	Kurt M. Rosenbach
Edward A. Kramer	Dr. Robert M. Rubin
Cathi M. Laderberg	Henry M. Schwan
Natalie G. Levinson	Linda Spindel
Bertram S. Nusbaum, Jr.	Alan D. Stein

Honorary Directors

Thomas Bachman	Edward G. Kaufman
Terri Budman	Dr. Rachelle Luna
Allan Donn	Dr. Meredith Rose
Morris Fine	June Saks
Sandra Forte-Nickenig	Miriam Seeherman
Jay M. Friedman	Honorable Louis Sherman
Leslie Friedman	Louis D. Snyder
Joan Harrison	Alan Troy
Nancy Hirschler	Stanley Waranch

Save the Date...

Ohel Sholom Temple Presents

Remembrance & Hope

A concert commemorating
the 75th anniversary of
Krystallnacht – the Night of Broken Glass

Sunday, November 3, 2013, at 4:00 p.m.

Ohel Sholom Temple Choir
Charles Woodward, *director*

and

Rabbi Rosalin Mandelberg
Cantor Wally Schachet-Briskin
Rabbi Arthur Steinberg

Donald McCullough's *Holocaust Cantata*
and music by Neil Ginsberg and Louis Lewandowski

Sinai Chapel
Ohel Sholom Temple

This program is free and open to the public.