



The Ohef Sholom Temple Monthly News Publication

# THE TEMPLE POST

Established 1844

Volume 59, Issue 3

November 2018

## MISSION STATEMENT:

*"My House Shall be  
Called a House of Prayer  
For All Peoples"*

To provide a spiritual,  
cultural and educational  
environment inspired  
by the highest  
Reform Jewish values.

## What's Inside:

Clergy Corner .....	2
Announcements .....	3
Worship .....	3
President's Report.....	4
Donations .....	5
Education & Engagement	6
Sukkot & Simchat Torah..	7
OSTY/JOSTY .....	7
Scholarship Opportunities	7
Caring Community .....	8
New Members.....	8
NEST Program .....	9
Teshuvah Stories.....	10
Life & Legacy .....	11
Sisterhood .....	12
Men's Club .....	13
From the Archives.....	13
Birthdays & Yahrzeits ...	14
Calendar .....	15
Shabbat Alive! Info .....	16



## Shabbat Alive!

Join us on **Friday, November 30**, for an energetic, interactive, and inspirational service featuring RICK RECHT. Perfect for worshippers of ALL ages and open to the entire community.

**5:30 pm Ohef Sholom Family Dinner**  
See back page for more info!

**6:30 pm Shabbat Alive!**  
**Family Service featuring**

# RICK RECHT

## 91st Annual Joint Interfaith Thanksgiving Service & Reception

**TUESDAY, NOVEMBER 20, 2018**

AT  
**FREEMASON STREET  
BAPTIST CHURCH**

400 E. FREEMASON STREET  
NORFOLK, VA 23510



**6:00 PM**

**SERVICE  
RABBI ROZ  
SPEAKING**

**6:45 PM**

**RECEPTION**



**FREEMASON STREET  
BAPTIST CHURCH**



**Ohef Sholom  
TEMPLE**



## CLERGY

**Senior Rabbi**  
Rosalin Mandelberg  
rabbi@ohefsholom.org

**Cantor**  
Jennifer Rueben  
cantorjen@ohefsholom.org

**Rabbi Emeritus**  
Lawrence Forman  
rabbiiforman@ohefsholom.org

## STAFF

**Executive Director**  
Linda Peck  
linda@ohefsholom.org

**Director of Education & Engagement**  
Stephanie Ben Simon, RJE  
stephanie@ohefsholom.org

**Music Director**  
Charles Woodward  
chuck@ohefsholom.org

**Office Manager**  
Shelley Stephens  
shelley@ohefsholom.org

**Clergy Assistant**  
Elizabeth Vincent  
liz@ohefsholom.org

**Controller**  
Anna Rivera  
bookkeeper@ohefsholom.org

**Education & Engagement Coordinator**  
Brent Franklin  
brent@ohefsholom.org

**Graphic & Web Design**  
Linette Bond  
graphics@ohefsholom.org

**Teen Advisors**  
Robyn & Paul Weiner  
ostyadvisors@gmail.com

## LAY LEADER

**President**  
Karen Fine  
president@ohefsholom.org

## CLERGY CORNER

One of my favorite times of my week happens at 11:00 on Sunday mornings, when our Sunday Learning Community gathers in the chapel for *tefilah*. Their excited chatter, their enthusiastic singing, the sweet way they **sign** the *Sh'ma*, and the look of accomplishment on their faces when they successfully lead us in a Hebrew prayer or answer a question we pose to them — these are the moments that lift my spirit and make every minute of frustration from the week melt away. I look out at their faces and I see a bright future for our people. If only we all could soak up a bit of the joy they take in our tradition. All are welcome at these services — come and experience it for yourself!



There is a disconnect, though, and I want to address it rather frankly. We do amazing things with our children, but they are, most often, centered around our children. With the exception of a few holiday celebrations, our family programming and our adult programming rarely cross paths. On one hand, this allows us to tailor our experiences to their intended audiences. But it also creates a problem.

Last year, I was talking to an older student about confirmation, and this child referred to confirmation as graduating from Temple. It wasn't the first time I've heard this expressed, and it breaks my heart every time. However, it makes sense. The Temple events that our children have been a part of have been just for them. With some notable exceptions, they don't see adults engaging in the rich Jewish life that we cultivate at Ohef Sholom. They come to Sunday Learning, to Shabbat for Everyone, and to holiday programming that is theirs. Rarely do they see adults engaged in their own prayer and study.

This is certainly not unique to Ohef Sholom, and not without its reasons. However, it is something that we can do better. With the help of our Director of Education and



**Cantor Jen**  
Cantor  
cantorjen@ohefsholom.org

Engagement, Stephanie Ben Simon, we have been working on ways to remedy this. It is time to enlist your help.

This year, we are shifting the focus of our family programming to better integrate our families into the greater life of our community. We are implementing a series of special Sunday Learning Community programs, created by Savran Steph in collaboration with our entire team, which will be designed for our whole community to engage in Jewish life and practice together. On the surface, they will be fun, interactive opportunities to come together and learn about our holidays, our traditions, and our history. But we have an ulterior motive that I believe is even more important. These programs will allow our adults to serve as role models for our children, showing them that Judaism is a lifelong endeavor, and that there is a place for them at Ohef Sholom and in the greater Jewish world throughout their lives.

We have also made a change to our Shabbat for Everyone initiative. We asked ourselves this question — how will our children learn to pray as adults if they never see the adults in their lives do it? And how do we, the adults, regain the sense of wonder and joy in our prayer that seems to come so easily to our children?

In the past, Shabbat for Everyone has included a children's service, a Shabbat dinner, and then an adult service. This year, we will only be doing one service, which will truly embody this idea of Shabbat for EVERYONE. The first of the four took place on Simchat Torah, and the experience was magical. To see children, teens, parents, and seniors all engaged in prayer together as one community, surrounded by our Torah which we unfurled around the sanctuary — this is what being a part of a Jewish community is all about. Our children were gifted with the opportunity to see adults pray. The bigger gift, however, may have been that our adults had the opportunity to see our children pray.

We have much to learn from each other, and the only way to soak up the best of what each of us has to offer is to be together. On Simchat Torah, I saw our regular Shabbat attendees praying with huge smiles on their faces as they watched the joy with which our children sang. I saw parents and children working together to fill in the blanks of the story of the parting of the sea, which we told in the midst

of the service. I saw little children standing next to our older members as they said Kaddish — perhaps they had not yet mastered the words and perhaps they did not yet understand its significance, but these moments serve as blueprints for their own prayer when they are older. Finally, after the service, we came together for dinner without the time constraints of years past, giving ample time to connect to members of our community whom we often don't have the opportunity to cross paths with.

Creating moments to pray, learn, and be together as one multi-generational community gives us a much better chance that when our children envision their lives as adults, synagogue life will be a part of that vision. These are the moments that show them that there is a place for them within Judaism well past confirmation. And they are also the moments that show us, the adults, that we never have to graduate from finding magic in our prayer and our tradition.

So, here is where we need your help. I am humbly asking you to show up as we embark on this ongoing mitzvah of teaching our children diligently. If you have children, bring them, and encourage them to make connections with our older members. If your children have long since flown the coop, come and show our children what it looks like to lead a rich Jewish life as an adult. Make the effort to talk to our kids about the value of Judaism in your life. Volunteer to

help with these new initiatives. There will be a little noise and a little chaos, but our patience with these inevitable sounds of the Jewish future will pay off in droves. I wholeheartedly believe that this, more than anything else we can do, is the way to ensure that our beautiful community's future will be as long and vibrant as its past. And it will have the added benefit of enlarging our prayer and strengthening our connections to each other and to Jewish life right now.

Our children took part in the Torah processional that opened our Havdalah and Rededication Service for the 100th anniversary of our sanctuary. While this momentous occasion celebrated our history, it also served as a commitment to our future. Our children must be at the front and center of that commitment, for soon, that future will be in their hands. Graduate from Temple? Never! May each of our Jewish journeys be lifelong, and may we rejoice in the task of passing the wisdom, value, and fulfillment of our tradition on to our children together as one holy community. *Keyn yehi ratzon.*

#### Upcoming Events:

**Dec. 2 - Chanukah! @ JCC**

**Dec. 7 - Shabbat for Everyone Chanukah Dinner & Services**

To inquire about and/or volunteer to help with Shabbat for Everyone or any of our special programs, please email [stephanie@ohesholom.org](mailto:stephanie@ohesholom.org).

## ANNOUNCEMENTS

Congratulations to **Suzanne and Dennis Gruelle** on the birth of their granddaughter **Lucy Marie Berger** on August 4.

Congratulations to **Karen Fine** for being honored as Women United's 10 for 10, which raises money to put South Hampton Roads' at-risk women and children on a path toward success.

#### Did You Know?

Ohef Sholom Temple is now set up with Fidelity Charitable. If you or your employer has a Giving Fund with Fidelity Charitable, you can direct your charitable giving funds to Ohef Sholom Temple by using our Tax ID # 54-6002056.

For more information, check out their website at:  
[www.FidelityCharitable.org](http://www.FidelityCharitable.org)

## CONDOLENCES

*Ohef Sholom offers heartfelt condolences to the following members & friends:*

**Ellen Rostov Hundley (Richard)** on the loss of her nephew, **Joe Rostov**.

**Phyllis Friedman** on the loss of her husband, **Melvin Friedman**.

**Irwin Sacks (Betty)** on the loss of his brother,  
**Arthur Sacks**.

## MAZEL TOV!

**Congratulations to John "Johnny" Williamson on his upcoming Bar Mitzvah on November 17!**

Johnny is the son of Valeria & Matthew Williamson; the brother of Emmylou, Hank, Madilyn, Aidan & Riley; and the grandson of Sally & Mikel Weber and Sharon & Sandy Williamson.



## TORAH PORTIONS: NOVEMBER

**November 3 25 Cheshvan**

*Torah Study - 9:00 am*

Parashat Chayei Sara, Genesis 23:1 - 25:18  
Haftarah: I Kings 1:1 - 1:31

**November 6 28 Cheshvan**

*Torah Study - 4:00 pm*

**November 10 2 Kislev**

*Torah Study - 9:00 am*

Parashat Toldot, Genesis 25:19 - 28:9  
Haftarah: Malachi 1:1 - 2:7

**November 13 5 Kislev**

*Torah Study - 4:00 pm*

**November 17 9 Kislev**

*Torah Study - 9:00 am*

Parashat Vayetzei, Genesis 28:10 - 32:3  
Haftarah: Hosea 12:13 - 14:10

**November 20 12 Kislev**

*Torah Study - 4:00 pm*

**November 24 16 Kislev**

*Torah Study - 9:00 am*

Parashat Vayishlach, Genesis 32:4 - 36:43  
Haftarah: Obadiah 1:1 - 1:21

**November 27 19 Kislev**

*Torah Study - 4:00 pm*

# A WORD FROM THE PRESIDENT

## The Big Picture: The Journey from Me to We



**Karen Fine**  
Temple President  
[president@ohesholom.org](mailto:president@ohesholom.org)

**A**s humans, we tend to see only that which we experience and can overlook things we are not aware of or familiar with. We unconsciously, and sometimes consciously, believe our way of being and thinking is the *right way*, *forgetting* that other ways of seeing the world and ways of doing things have equal merit. We *forget* that we are part of something bigger, part of a bigger community and world.

***It is by "self forgetting" that we can truly see beyond our own experience and open our minds and hearts to a bigger picture. Awareness that we are not only here for ourselves allows us the space to see things from another perspective, one in which we are all connected. We are not alone on this journey called life!***

I was recently posed the question, "What have you found to be one of your greatest challenges as President?" There was no hesitation in my response. One of the greatest challenges I have found is too few of our *sacred partners* know or understand the *Big Picture* of OST - what our Temple community does, how it operates, and what it takes to make it all happen. There is a lack of awareness that **We of Ohef Sholom** are a complex organization with many facets to it, not just the one we can have a tendency to see from our individual experience. Additionally, all the facets are connected and equally important in our carrying out our mission.

Our greatest asset or strength, *being inclusive and welcoming to all*, can equally be our greatest challenge. We are a diverse community and as such, we have a lot of different ways in which our community members practice their Judaism. We strive to meet ALL these needs. We are a multi-generational learning community for children and adults, both those new to Judaism, as well as those further in their journey who desire to deepen their knowledge and grow their spiritual lives. We are a Caring Community for our members and for our larger community, performing social actions and outreach to practice and express *Tikkun Olam*. We are a Sisterhood and Men's Club where deep relationships are formed and fostered. We are a volunteer Choir inspired by professional direction and expertise which elevate this expression of Judaism to its highest level. We are Chanting and Yoga Therapy groups, as well as Walking, Quilting, and Eco Judaism groups who find their Judaism in caring for our physical world. This is only a partial list, for it includes other traditional as well as newer ways we are continually exploring to *live our Jewish values*. We pray with our hearts, our hands, and our feet. We are truly *A House of Prayer for All Peoples!*

All of this takes a tremendous amount of organization, management, and resources, both human and financial.

**I understand and am empathetic to why more of us do not see the "Big Picture" of OST**, and I realize we ALL don't necessarily need to see it. However, I believe strongly that it is important for at least the majority of us,

as *sacred partners*, to be aware of *this bigger picture*. Without an informed understanding, it is easy to come to incorrect conclusions, misunderstandings, and even judgments about who we are and how we operate. Without a clear understanding of the "*Big Picture*," we may see our part of the whole as the most important part compared to others' ideas, which may not resonate with us.

This is why I have been steadfast in the goal of being more transparent and open about our community to you, my *sacred partners*. I use this term a lot, for some, I'm sure, ad nauseam; however, it is my strong belief that *this is what we are*, not just as members of our *sacred community* of Ohef sholom, but also as fellow human beings.

Regardless of the amount of time we do, or do not, spend in our beautiful building, and whether we engage in any, or all, of these expressions of OUR inclusive community's expressions of Judaism, it is incumbent upon us ALL to be more aware and have a better understanding of OUR community, to see the "*Big Picture*."

I remember being the person who showed up only a few times a year for High Holiday services, a loved one's *yahrzeit*, or a family life cycle event, or dropping my children off at Religious School – all of which I appreciated and found truly meaningful. My thoughts or attention were not focused on much except what **I was getting** from these experiences, **not what I was giving** to them. My perspective was *self-centered*, not *other-centered*. It was about me getting what I needed. It was about **Me**, **not** really something greater. I wasn't focused on **We**. My perspective was limited to my experience.

Self-awareness is considered a crucial trait of successful leaders. In fact, it is the strongest predictor of overall success, according to a recent Cornell University study. What blocks us or blinds us from being more self-aware? The simple answer is most of the time we are "not there" to observe ourselves. We often operate on "autopilot," unconscious of ourselves. Even when we are "there," we are biased to look for things that confirm or make sense of information as it gives assurance to our understanding. It takes work, attention and time to become more self-aware, and in our busy lives, it is easy to avoid.

I believe **We of Ohef Sholom**, as *sacred partners*, are *all leaders* of our community in one way or another. Yes, some of us may hold positions of leadership, but if leadership is viewed from a broader perspective, as an *activity rather than a position*, then we each have a responsibility to this partnership.

I am always available to meet and help anyone find answers to their questions, to help my partners better understand OUR community. I encourage you to ask the

*continued at bottom of next page (5)*



# WE APPRECIATE THE THOUGHTFULNESS OF THOSE WHO SUPPORT OST

by remembering and honoring their friends and loved ones through their generous contributions.

Please have your donations submitted to the Temple before the beginning of each month.

## 175<sup>TH</sup> ANNIVERSARY FUND

### In Memory of:

EUGENE ALFRED DENISON  
\*Sharon & Joseph Freeman  
\*Cheri Wolff

## MOLLIE AND GEORGE RADIN ARCHIVES FUND

### In Memory of:

HERBERT LEGUM  
\*Ruth & Edward Legum  
MELVIN RADIN  
Karen Plotnick  
DR. GARY SCHECHTER  
\*Ruth & Edward Legum

## CANTOR JENNIFER RUEBEN'S DISCRETIONARY FUND

With Appreciation for all your hard work during Rabbi Roz's recuperation to:

CANTOR JEN RUEBEN  
\*Penny & Ken Powders

## CARING COMMITTEE FUND

### In Memory of:

STEPHEN NADLER  
\*Diane & Ken Muhlendorf  
JOE ROSTOV  
\*Diane & Ken Muhlendorf  
ARTHUR SACKS  
Nancy & Steve Rosenberg

## CARING COMMITTEE FUND -

### ECO-JUDAISM PROJECT

In Honor of the Bar Mitzvah of:

CADEN LONGWATER  
\*Sandi Longwater

## CARING COMMITTEE FUND - NEST

### In Memory of:

JOE ROSTOV  
\*Ellen Hundley Rostov & Richard Hundley

## CARING COMMITTEE FUND - SOUP KITCHEN

### With appreciation to:

THE TIKVAH COMMITTEE  
\*Ruth & Edward Legum

## FLORAL FUND

### In Memory of:

ALEX BERKOWITZ  
\*Sue Ellen & Seymour Teach, Elise, Jeffrey & Jay Berkowitz  
EUGENE ALFRED DENISON

Suzanne Barr

JACOB DONSKY

\*Pansy & Jerome Perlman

SIDNEY GEFFEN

Sheila & Matthew Krakower

GERALD HOCHSTADT

Shelley & Jeffrey Loeb

SYDEL KRAKOWER

Sheila & Matthew Krakower

ALFRED LEGUM

Suzanne Barr

CELIA MANDELKERN

\*The Bloom & Ross Families

RICHARD MILLER

Suzanne Barr

FRIEDA ROSENBAACH

\*Rose & Kurt Rosenbach

LAURENCE RUBIN

\*Judy & Bob Rubin

VIRGINIA K. SOHMER

Carol & Jeff Press

## HERMAN SPIGEL

\*Barbara Spigel  
FLORA LEAH TRUMP  
\*Barbara & Paul Johnson

## OHEF SHOLOM FOUNDATION FUND

### In Memory of:

EUGENE ALFRED DENISON  
\*Minette & Charles Cooper  
JULIAN BERNARD JACOBS  
\*Minette & Charles Cooper  
ANITA PARKS  
Sandra Glasser Tavss  
MARY ROTTENBERG  
\*Rose & Kurt Rosenbach  
JANE PINCUS SILVERSTEIN  
\*Sandra Glasser Tavss

## GAIL W. BACHMAN RELIGIOUS SCHOOL FUND

### In Memory of:

ARTHUR SACKS  
Gail & Tom Bachman  
JANE PINCUS SILVERSTEIN  
Gail & Tom Bachman

## RABBI ROSALIN MANDELBERG'S DISCRETIONARY FUND

### In Honor of your recovery to:

RABBI ROSALIN MANDELBERG  
\*Penny & Ken Powders  
In Memory of:  
ARTHUR SACKS  
\*Barbara & Harry Fried

## With Appreciation to:

RABBI ROSALIN MANDELBERG  
\*Paul Woodson

## SISTERHOOD FUND

### A Speedy Recovery to:

PAM SNYDER  
\*Susan & Alan Stein

## TEMPLE FUND

### Happy 80th birthday to:

GERRY BLOOM  
Barbara & Beril Abraham  
In Honor of 50th Wedding Anniversary:  
NANCY & JAY LAZIER  
\*Shelley & Jeffrey Loeb

### In Memory of:

MELVIN FRIEDMAN  
\*Sue Ellen & Seymour Teach  
JULIAN BERNARD JACOBS  
\*Diane & Ken Muhlendorf  
LYLA LONGMAN  
Barbara & Beril Abraham  
ARTHUR SACKS  
\*Shelley & Jeffrey Loeb

## TREE OF LIFE

### Happy 80th Birthday to:

GERRY BLOOM  
\*Your H.B., Children & Grandchildren

## TREE OF REMEMBRANCE

### In Memory of:

ALICE FRIEDMAN  
RALPH FRIEDMAN  
STEPHEN FRIEDMAN

## KENNETH MCMILLAN

\*Marjorie Shaw & Rona McMillan

## WOODWARD MUSIC FUND

### In Memory of:

HELEN GIFFORD  
\*Barbara & Bill Hearst  
ARTHUR SACKS  
Harriet & Gerry Bloom  
\*Laura & Bruce Gilbert  
\*Lynn & Bob Seltzer

## LESLIE LEGUM CAMP SCHOLARSHIP

### In Memory of:

ARTHUR SACKS  
\*Jay Legum

## ROSE ANN & LESTER GROSSMAN FUND

### A Speedy Recovery to:

GARY HASKELL  
\*Louis. L. I. Grossman  
In Honor of the 85th Birthday of:

SARA MONSEIN GROSSMAN

\*Louis. L. I. Grossman

### In Memory of:

WILLIAM Z. REICH  
\*Louis. L. I. Grossman

## SARAH COHEN SCHOLARSHIP FUND

### In Memory of:

EUGENE ALFRED DENISON  
\*Betsy & Erik Cooper

\*denotes gifts of \$25 or more

FRIDAY  
NIGHT  
LIVE

## NOVEMBER 16 | 6:30 PM

Join us for an uplifting especially-musical Shabbat service featuring our FNL band, followed by a catered oneg paired with delicious spirits. This event is open to members, friends, family, and the greater community and we would LOVE to see you there!

FNL is FREE OF CHARGE and made possible by funding from the United Jewish Federation of Tidewater and the Tidewater Jewish Foundation.

questions. Bring your concerns to me or others in positions of leadership so that together we can learn and grow, and create solutions, rather than simply stating and staying in the problems.

This is OUR community. We need all of our expertise, wisdom, and resources to make this community reach what I see as tremendous potential, to be visionary in our co-creation of our future.

I am grateful to be of service to this community, to be part of something bigger than I. I am grateful to be an integral part of **We of Ohef Sholom** and to help create ways to meet the needs of others not always like me.

I invite you to join me on this journey from **Me** to **We**.

Shalom, Karen

# EDUCATION & ENGAGEMENT

Last month we truly kicked off the year with two of our innovative and uniquely designed programs for our learners and families in the SLC. A deep thank you to all who have helped to make both of these events so successful. As the focus is on our community, we certainly are watching the time-tested proverb "it takes a village to raise a child" come to life. I thank all of you for being our village. Our youngest generation learns from all of the adults in our community and need you to show them what it means to be the leaders of our faith and traditions.

November will also feature our first of three Town Hall events to sit down and talk through the vision, mission, and direction of the Sunday Learning Community.

I hope to see you there!

## Sunday Learning Community Events

### November 3

9:00 am B'nai Mitzvah Class

### November 4

**\*Daylight Savings Time ends -  
Turn your clock back one hour!**

8:45 am Hebrew  
10:00 am Sunday Learning Community  
12:45 pm Faculty Meeting

### November 10

9:00 am B'nai Mitzvah Class

### November 11

8:45 am Hebrew  
10:00 am Sunday Learning Community  
11:00 am Wiggles & Giggles  
12:30 pm Better Together

### November 14

6:00 pm SLC Town Hall Meeting

### November 17

9:00 am B'nai Mitzvah Class

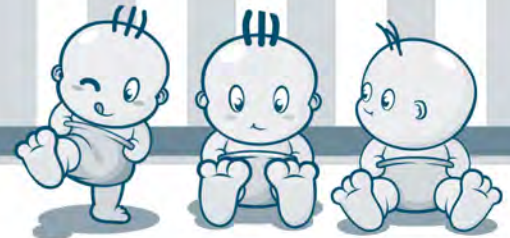
**December 2 at JCC joint day with Beth El**  
Special Program at the JCC!

A big "thank you" to everyone who participated in our Communications Feedback Survey. We are currently analyzing all data and will create an action plan to move forward as we continue to learn the best ways for you to hear from us.



Stephanie Ben Simon, RJE  
"Savran Steph" סברן סטף  
Director of Education & Engagement  
stephanie@ohefsholom.org

## wiggles & giggles with a Jewish Twist



Next Event: November 11 at 11:00 am

For more information, contact Kitty Wolf at  
kitty@ohefsholom.org or 757-625-4295



Stephanie Ben Simon, RJE  
Director of Education & Engagement

Come to all  
three Town  
Halls to be  
part of the  
conversation!

## TOWN HALL WITH SAVRAN STEPH!

Our new Director of Education & Engagement wants to hear your thoughts, ideas and wishes for our children and their future.

Tell her...

## WHAT'S YOUR JE(WISH) FOR OUR SCHOOL?

This school year kicks off the beginning of a multi-year plan to transform and modernize our SLC so we may provide education that is high quality, relevant, consistent, and prepares our children to be adult members of the Jewish community. These Town Halls are an opportunity to be a part of the conversation! Come and hear what we are thinking and share your thoughts.

Wednesday, November 14 @ 6 pm at OST

Tuesday, February 26 @ 6 pm at OST

Monday, April 29 @ 6 pm at OST

**OPEN DISCUSSION. ALL ARE WELCOME!**



To RSVP, call (757) 625-4295 or email  
brent@ohefsholom.org



# SUKKOT & SIMCHAT TORAH AT OST



## OSTY/JOSTY



**NOVEMBER 10 @ 6:00 PM**

Come out for Friendsgiving with OSTY and JOSTY!

Experience a potluck-styled Thanksgiving dinner surrounded by your friends. If you want to bring food, please fill out the sign-up genius that will be sent in an email.

RSVP to [ostyadvisors@gmail.com](mailto:ostyadvisors@gmail.com).

## SCHOLARSHIP OPPORTUNITIES

### IT'S CAMP TIME!

Membership at OST has its rewards, including the availability of URJ-sponsored scholarships for overnight Jewish summer camps.

For more information, contact **Savran Steph** at (757) 625-4295 or [stephanie@chefsholom.org](mailto:stephanie@chefsholom.org).

Tidewater Jewish Foundation also has grants available for Jewish camp! For more information and to apply, go to [onehappycamper.org](http://onehappycamper.org).



# CARING COMMUNITY

Do you like to express your Judaism by performing acts of loving kindness, or by repairing the world? Here are opportunities at our synagogue to participate in community outreach, or to support congregants in their time of need.



your  
**Caring  
Community**

## Upcoming Activities

**Mitzvah Day 2019** planning is in the works for the Spring! Please contact Linda Fox-Jarvis with your ideas and offers of assistance at (757) 335-1200 or [lfoxjarvisre@gmail.com](mailto:lfoxjarvisre@gmail.com).

**NEST:** Our congregation hosts one week of a rotating overnight shelter, dinner, breakfast, and brown bag lunches for homeless adults. Our week this year is 12/12 – 12/19. Donations of your time in

addition to socks, hats, gloves, protein bars, and time are needed! Please look for the NEST Sign-up Quicklink genius on the Temple website or contact Sharon Ross at (757) 617-0101 or [s4ross@cox.net](mailto:s4ross@cox.net).

An **Eco-Judaism Film Festival** is being planned for the spring. Your ideas and help with planning are welcome! Contact Mary Ann Nadler at (434) 981-4777 or [mln@mlnader.net](mailto:mln@mlnader.net).

## Ongoing Activities

**Shalom Greeters:** *Hakhnasat orchim* (hospitality to guests) is a mitzvah and an important part of building a connected community. Therefore we actively welcome guests into our sacred home during Shabbat with greeters.

Greeters not only hand out the Order of Service and prayer books, but seek out unfamiliar faces after services to introduce themselves and make guests feel comfortable. If you have any questions about greeters, contact Sharon Nusbaum at (757) 515-4266 or [sharonuz@aol.com](mailto:sharonuz@aol.com).

**Vegetable and Native Plant Gardening** is happening on the Temple grounds to improve habitat and grow food in a Jewish context. Time is flexible, and all ages and knowledge levels are welcome! To get involved, contact Jackie Haywood at (757) 588-7687 or [jackiewoh@yahoo.com](mailto:jackiewoh@yahoo.com).

**Tikvah Group:** Congregants comfort and support congregants who are ill or bereaved with visits, cards, and meals. To volunteer, contact Linda Fox-Jarvis at (757) 335-1200 or [lfoxjarvisre@gmail.com](mailto:lfoxjarvisre@gmail.com).

**Soup Kitchen:** Help to prepare a large lunch as well as a toiletry and clothing pantry for guests on the last Monday of each month from 9:30 am - 2:00 pm. To volunteer, contact Dorianne Villani at (757) 617-8624 or [dvillani@cox.net](mailto:dvillani@cox.net).

**Tzedakah Quilting Group:** Quilters of all experience levels meet three times a month to create quilts to donate to the Jewish Family Service of Tidewater. To join, contact Marsha Moody at (757) 495-6573 or [vamoody1@verizon.net](mailto:vamoody1@verizon.net).



## NEW MEMBERS

**We are excited to welcome the following new members to our Temple community this fiscal year (since June 1):**

Jenna Aiken-Ritzmann &  
Jason Ritzmann  
Art & Donna Becker  
Stephanie & Shay Ben Simon  
Dana Cohen  
Michael Cohen  
Frieda & Marshall Duny  
Jonna & John Ehehalt  
Michele Goldberg  
Jeanne & Jeffrey Goodman  
Allison Kaye &  
Christopher Graves

Amie & Byron Harrell  
Sara Hayet  
Amber Shinn & Aaron Haywood  
Sharon Hurwitz  
Kim & Brad Johnson  
Joan & Ken Johnson  
Diane Bloom McCabe  
Jerome Minskoff  
Courtney & Daniel A. Morrall  
Kathryn Morton  
Sommer & Brad Nadelstein  
Jane & Bill Park

Joyce Scheimberg  
Katy Snyder  
Gilda & Albert Solomon  
Randi & EJ Strelitz  
Emily & Nathan Strelitz  
Sylvia Turner-Yanofsky &  
Alan Yanofsky  
Ellen & Bill Wagner  
Morgan & Peter Zubof



## CONGREGATIONAL MITZVAH OPPORTUNITY

Each winter our congregation comes together to practice *gemilut chassidim* (deeds of loving kindness) and *hachnasot orchim* (hospitality) by using the physical space of our house of worship to bring 60 people without homes in from the cold for seven nights. The program is called NEST (Norfolk Emergency Shelter Team), which is a network of over 30 churches and synagogues that house the homeless for one week each during the chilly winter months (November-March). For 11 years, Ohef Sholom has participated in this program in partnership with Ghent United Methodist Church.

Because one of Ohef Sholom's core values is social outreach, we chose as a congregation to invest our volunteer staff and financial resources into NEST. Additionally, NEST is an important part of OST's *brit olam*, our commitment to support the most vulnerable members of our community. We budgeted to cover 80% of this cost, \$5,000, including adding additional security to provide a safe space for our guests and volunteers.

### Ohef Sholom's NEST week is December 12th - 19th

Hosting NEST is a great opportunity for our congregation to make a difference and participate in the broader Norfolk community. Our guests who need a warm place to sleep arrive in the evening. Mats are provided for them to sleep on. For the seven days we host, we provide three meals a day – a hot dinner, a hot breakfast, and a brown bag lunch.

**Making an immediate impact on others through NEST is a life-changing experience.** Find your place in this congregational program. There are many ways you and your family can make an impact.

**Choose a Shift:** Seasoned volunteers and Norfolk Police officers are present at all times to lend first time volunteers a hand. Volunteers cook, set-up and monitor our guests. We welcome children over the age of 5; anyone under the age of 14 needs to be accompanied by an adult.

**The Dinner Shift** involves set-up, cooking and serving as well as registering and monitoring our guests.

**The Overnight Shift** consists of monitoring our guests as they sleep (a great time to catch up on reading!). Our overnight shifts can be the hardest to fill, so please consider signing up for this shift so the volunteer program organizers do not have to fill all of them.

**The Breakfast Shift** feeds our guests breakfast and then does light kitchen cleanup. It's easy to complete this shift, and make it to work by 8:00 am.

Sign up for a shift via the NEST Sign-up Quicklink at [www.ohefsholom.org](http://www.ohefsholom.org).

**Sponsor A Meal:** Serving 14 hot meals for 60 people in one week requires time and financial resources. If you and your family, friends, and/or neighbors can, please join together and sign up to sponsor a meal. Breakfast sponsorships are \$100 and dinner sponsorships are \$150. You can either donate the funds, or donate and lead the planning and execution of the meal.

**Donations of Goods:** Gloves, hats, and socks are all items we would like to give our guests to protect them from the elements. Once we hit 60 guests a night, we have to turn people away. Bus tickets are often needed to give the guests transportation elsewhere. Protein bars, boxed snacks, pre-made and frozen breakfast breads/muffins, and softer fresh fruit such as bananas and clementines are all very useful. Place perishable donations in the refrigerator labeled "NEST" and nonperishable items in a NEST donation box down the Religious School hall, just past the kitchen.

**Monetary Donations:** All donations are welcome to support this program. Simply note "NEST" in the memo section of your check.

## WHAT IS JUDAISM

### An Intro to the Jewish Way



### For Seekers, Beginners and Lifelong Learners

led by Kathryn Morton

What is Judaism? A religion? A community? A way of life? A culture? A civilization? A people?

Judaism is all of the above - a faith in action that values life, brings blessings to our fellow human beings, and strives to build a better world. Come and learn.

For more information please contact Kathryn Morton at 757-625-4295 or [kathryn@ohefsholom.org](mailto:kathryn@ohefsholom.org).

**9:00 am • Saturday mornings**

November 3	Worship: Talking to God, One Another and Ourselves
November 10	Why Always with the Questions?

# JOURNEYS TO JUDAISM

Each year before the High Holy Days, Rabbi Roz asks three congregants to share their Jewish Journey with the congregation during Shabbat services. These 3 Teshuvah stories will be printed so that our whole congregation can share in their story.



**M**y Jewish story begins in Alabama, so I feel it's appropriate to wear my seersucker suit, even after Labor Day. I consulted with Rabbi Roz and she assured me that this is acceptable until Rosh Hashanah, right?

My great-grandfather left Lithuania in 1909 when he was 18 years old, and opened up a grocery business that later became Paper Chemical & Supply Co., which was passed down to my grandmother, then my uncles and father. Sam Israel was a town leader and was very community-minded. He would have loved Alyssa. He worked to improve adult literacy throughout the state. He was even eulogized in the congressional record by Senator Heflin. My grandmother Beatrice was a devoted Jew and operated as the "Queen Bea" for our family. She was a founding sister of SDT, a Jewish sorority at the University of Alabama in 1935. There was need at that time for an inclusive place for Jews on campus, and she made it happen. She would fit right in here at Ohel Sholom. She raised 3 boys in Northwest Alabama and the family was very involved in supporting and reorganizing the Temple so they could join the Union of Reform Judaism.

I was born at Barnes-Jewish Hospital in St. Louis, Missouri and our family moved to Norfolk two weeks later. We joined Ohel Sholom, following our family's Reform tradition. I grew up within walking distance of the JCC on Newport Avenue and attended daycare and too many camps to remember there. I spent many afternoons perfecting my free throw shots in the gym, or trying to sneak into the Men's Club lounge. It was always nice to see my mother there in her various volunteer roles. I even learned how to drive in the parking lot.

My parents, Ken and Diane, met in Sunday school when they were 14 and they tell me it was love at first sight. They are probably telling the truth because they both went to same-sex high schools. Like most kids, the thought of going to "school" on Sunday seemed like a terrible idea to me. For four straight Sundays one fall I was dropped off by our carpool but I never stepped foot

in this building. Let's just say I got to know the Ghent neighborhood very well. Apparently after four weeks somebody calls your family to make sure everything is okay. I don't recall the punishment I received, but I know I deserved it.

I remember the time when I transitioned from the family service to the big show here at Ohel Sholom. It sounded great until they told me I had to wear a tie, so we got out the clip-on version and I tried to sit in my seat without fidgeting and driving my mother crazy, or keeping my hands off of my older brother. I swear Rabbi Forman's booming voice was directed at me to ensure that I was paying attention.

At the age of 14 my parents introduced me to BBYO, clearly indicating it was time to meet a nice Jewish girl because that's the age that my parents met. And it worked. We dated for three years until it was time to go to college. We both went to UVA and she tried to get me to go to Hillel, but I may have been too intoxicated on Friday and Saturday to make it. I lived in a fraternity house with nine other Jews so we figured we had a *minyan* at all times and we prayed enough to the porcelain gods each weekend so there was no need to figure out this Hillel thing.

After college the story goes that I moved to Washington, D.C. to start my career, but the honest truth is that I moved to chase girls. If you want to know how we met you should ask Alyssa and she will tell you the real story, but I prefer to tell everyone that she was the one that picked me up at the bar.

Rabbi Roz thanks me quite often for bringing her to our town. Alyssa is highly educated, wildly fun and incredibly driven and she has become the model Jewish citizen that inspires me everyday to be a better man, husband, father and Jew. Alyssa taught me more about being Jewish than all of the three times I attended Sunday school combined, and I can't thank her enough for all the work she continues to do for our community. My Jewish journey clearly has gotten back on course because of her, her passion for helping people and her focus on repairing the world.



My kids, Elijah and Nyla, really loved their experience at Hebrew Academy. Today is their 4th day of their new public school and we know they will have great opportunities there. But I realize what a special place HAT is, and how critical it was to forming our children's Jewish identity.

So that's the nuts and bolts of my journey. I understand my Jewish roots, I grew up here at Ohef Sholom, I left town to find my Jewish partner and I have returned with her, raised my family here and have sent my kids to Jewish day school. I have visited Israel twice in the last three years and consider myself a Zionist. Our family volunteers countless hours and donates more and more money each year. I used to run away from this place we call Temple and now I'm running towards it. Soon I will have the pleasure of dropping my own kids off at Sunday school and I will be sure to hang out a bit just to make sure they stay in the building.

So my journey, on paper, looks great. I'm involved, my family is involved, my kids are engaged, and my Rabbi thinks I'm funny, right? But is this story complete? What else can I do? What makes this journey special to me and how does it end?

And that's where I think I can make the biggest difference,

because my story, and your story, should never end.

Many of you know that I am a Certified Financial Planner™ with a passion for charitable planning. I believe my unique value is helping people understand their emotions about their money so they can ensure that they spend it on the things that matter most to them.

The LIFE & LEGACY program and our quest to build our endowment is about keeping all of our stories going and to ensure that new stories can be written. Jewish stories have been written for thousands of years and they can be written for thousands more. I believe that everybody can participate in some way and I am going to try my best to help as many people as I can to understand the high impact of giving. Because if you know you are ok, and your family is well taken care of, isn't it all of our responsibility to ensure our community is taken care of, too? If I call you, or somebody else on our team calls you to hear your story, please know that we are not asking you to sacrifice your lifestyle or your children's lifestyle. We are asking you to ensure Jewish stories can continue to be written. There are easy ways to give that will sustain Ohef Sholom and Judaism. I look forward to hearing your own unique story in this coming new year. L'shana Tova.

## LIFE & LEGACY

Here is a good reminder of **WHY** leaving a **LEGACY GIFT** is essential to ensuring that **Ohef Sholom continues to be a beacon of light in our community!**

### Donor Spotlight: Joashua Schulman and Family

**How long have you been a member of Ohef Sholom and why did you decide to join?**

We've been members of OST since 2009. We were looking for somewhere that inspired us to reconnect with our spirituality and an inclusive environment where our family could grow, worship, and learn together. We found exactly that and more in OST.

**What values are important to you at Ohef Sholom and/or the Jewish community?**

Our most important values start with our children. Jewish learning should be serious, but it should also be fun, engaging, and a family endeavor. OST has opportunities for Jewish learning for all ages and interests, whether it's our weekly Torah Study, Wiggles & Giggles, our Eco-Judaism programming, or our musically-inspired Shabbat For Everyone services.

**How has Ohef Sholom impacted your life?**

We've found a community of lifelong friends at OST



as well as an outlet for our desire to give back. Whether it's through our time, talent or treasure, everyone has an opportunity to make a difference for our future.



**What are your hopes for the future of Ohef Sholom?**

Our congregation's 175th anniversary is right around the corner, and my hope for OST's future is that we're here for another 175 years and beyond—and that we serve as a model of what a sustainable, inclusive, and civic-minded religious institution should look like.

**LASTLY, all of the above considered, why did you decide to make a LIFE & LEGACY gift?**

We chose to make a Legacy Gift because someone asked us! It's a commitment PLUS an action—and it's a way for us to show that we support the future of the Jewish Community in Hampton Roads.

**Ohef Sholom currently has 48 NEW Legacy Gifts committed since we started the program at the beginning of 2017.**

**If you are interested in making a difference in the Jewish community by leaving a legacy, contact LIFE & LEGACY Chair, Matthew Fine at [matthewfine@cox.net](mailto:matthewfine@cox.net) or (757) 407-1368**

**Rachael Nusbaum**

LIFE & LEGACY Assistant

[lifeandlegacy@ohefsholom.org](mailto:lifeandlegacy@ohefsholom.org)

# Sisterhood

We're excited to open our Sisterhood's Book Club meeting to the community. It will be held in the chapel on Nov. 13 at 7:00 pm following our regular 6:00 pm meeting.

**On the Sickle's Edge** by Neville Frankel is a spellbinding page-turner inspired by his own family's history. In the novel, the dispersed Shtein family endures the massive social changes between South Africa, Russia and Latvia in the 20th century. Its unusual perspective is of a family's shedding and later finding their Jewish identity.

Mr. Frankel will be joining us via Skype so send him your questions for a stimulating discussion at <http://bit.ly/askneville-ohefsholom>. We look forward to seeing you there!

Did you notice the beautiful silver Torah crowns, candelabras and serving plates that gleamed for the 100-year Rededication of the Sanctuary? A special thanks to the Sisterhood women for all the polishing!

Keep an eye out for dates to sign up to help set-up the Chanukah shop, and to help with the Chanukah dinner, which we will send out towards the end of the month.

-Jeanne & Abbey, Sisterhood Co-Presidents

## Sisterhood Book Club

Tuesday  
November 13



6 pm Sisterhood Meeting  
7 pm Book Club Meeting With Neville Frankel

Presents Author  
**Neville Frankel**  
via Skype

Neville Frankel, author of *On the Sickle's Edge*, which was featured in the 2017 JCC Jewish Book Festival, and was a finalist for the 2017 National Jewish Book Award, will join us via Skype for November's book club meeting in Sinai Chapel on November 13, 2018 from 7-8pm. This discussion is not restricted to the Women of OST, and we hope our men will attend as well.

Frankel pursued doctoral work in English literature at the University of Toronto and is also the author of *Bloodlines* and *The Third Power*. He received an Emmy for his work on a BBC documentary, *The Mind of a Murderer*. Frankel was a 2013 and 2017 Jewish Book Council author and has participated in speaking engagements around the country.

RSVP to [reservations@ohefsholom.org](mailto:reservations@ohefsholom.org)

Submit any advance questions for Frankel to:  
<http://bit.ly/askneville-ohefsholom>

Have questions for Neville to address? Submit them!

Open to all members of OST!

## shabbat for everyone

Multi-generational  
Shabbat Service

6:00

Pre-neg  
5:30

Sisterhood sponsored  
75th Anniversary  
Chanukah Dinner  
6:45

Teen Social  
7:10

Please bring  
donations of  
warm gloves,  
hats or socks for  
NEST

Friday,  
December  
7

The menu will include:

### DINNER

Beef Brisket  
Roasted Carrots  
Fresh Green Salad  
Potato Latkes & Fixings  
Challah  
Vegetarian "Meatloaf"

CHILDREN  
Chicken Nuggets

DESSERT  
Brownies  
Donut Holes



## Veterans Day

SPECIAL PROGRAMMING & BRUNCH

November 11, 2018

10:00 am Dedication of Bench  
Honoring Veterans

10:30 am Brunch sponsored by  
OST Men's Club

11:00 am Presentation on Veterans  
& Homelessness



For More  
Information  
call the Temple at  
(757) 625-4295  
or email

[mensclub@ohefsholom.org](mailto:mensclub@ohefsholom.org)

**Featured Speaker:** Michael Wasserberg, Director of the City of Norfolk's Office to End Homelessness.

Join us for a morning honoring those who served our country in the U.S. Armed Forces.

Our congregation is committed to lessening the burdens of our homeless neighbors. We also invite you to serve at our Soup Kitchen on the last Monday of each month or volunteer to help when we welcome people to stay overnight in our building during NEST the week of December 12-19.



**Cost:** FREE

Monetary donations, donations of new socks and underwear, or gently-used winter clothing for NEST gratefully accepted!

RSVPs requested (but not required) to:  
(757) 625-4295 or [reservations@ohefsholom.org](mailto:reservations@ohefsholom.org)



## FROM THE ARCHIVES

### ARCHIVES PHOTO CAPTION CONTEST

Have a humorous caption for this photograph from the Ohef Sholom Temple Archives?

Email your caption to [archives@ohefsholom.org](mailto:archives@ohefsholom.org) or leave your suggested caption in the Archives mailbox in the Temple office by **November 31, 2018**. Be sure to tell us your name. The winning caption will be published in the next issue of *The Temple pOST*.



Much to our delight, we have another winning caption for the photo that originally appeared in the August 2018 issue of *The Temple pOST*.

This caption was submitted by Allan Zeno, who also gave us the names of the four women in the photograph (left to right, Libby Crockin Zeno, Ann Miller, Esther Cooper, and Alice Frank).

**And the caption (September 2018 issue):**

"Beautifully handcrafted by the OST sewing group; I'd give them away, but OST won't let me!"



**Alice Titus**

OST Archivist

[archives@ohefsholom.org](mailto:archives@ohefsholom.org)

## NOVEMBER BIRTHDAYS

### November 1

Alan G. Bartel  
Pete Brunk

### November 2

Heather Beloff  
Janet Rubin

### November 4

Paula Berenson  
Celia Burnett  
Bill Pucher

### November 5

Alex H. Pincus

### November 6

Marion Friedman  
Jonathan A. Kranz  
Genna Morissette  
Chris Sisler

### November 7

Jessica Branhm  
Diane Einhorn  
Michal Mahgerefteh

### November 8

David Cohen  
Mark K. Friedman  
Valeria Williamson

### November 9

Judith G. Lefkowitz  
William Park

### November 10

Brian R. Hirschler  
Gilda Solomon

### November 11

Michael Cohen  
Miles Leon  
Amber Shinn

### November 12

Zachary Fine  
Nathaniel Fine  
Ross Firoved  
Jane Park  
Troy L. Rapoport  
Susan H. Stein  
Ira M. Steingold

### November 13

Marilyn Kaye Bunn  
Robert G. Hofheimer, Jr.

### November 14

Carol Brum  
Colleen Fox  
Debra Mervis Keeling  
Lisa Spiegel

### November 15

Lauren Bensink

### November 16

Jerry Foer  
Lance Goldner  
Meredith B. Rose  
Albert Rosenfeld

### November 17

Glen Arluk  
Ken Johnson  
Leo S. Simon

### November 18

Rebecca Halpern  
Jennifer Metzger

### November 19

Kimberly Kranz  
Gloria Simon

### November 20

Elizabeth Staub

### November 21

Harold Anten  
Laurence Levin

### November 22

Eileen Colton

Nancy S. Embree  
Kelly D. Kinnear  
Sheal D. Lisner  
Joyce Scheimberg

### November 23

Donald Z. Goldberg  
Elyse Stedman

### November 24

Gail Holzweig  
Ross Kantor  
Marian Leavitt  
Adam Longwater

### November 25

Anna Kosovsky  
Sheila Krakower  
Roger W. Lidman  
Alicia Willson-Metzger

### November 26

Ernestine K. Goldstein  
Robin Kyle  
Robert S. Seeherman

### November 27

Matthew Branham  
Alan D. Stein

### November 28

William Bernstein  
Mary Cantin  
Jeffrey Fine  
Katy Snyder  
Celeste Stredler

### November 29

Jack Lee Fox  
Colby Smith  
Sue Ellen Teach

### November 30

Barbara Blum  
Anne Y. Kramer

## NOVEMBER YAHRZEITS

### October 28 - November 3

Abe Abram  
Alfred Alperin  
Lemuel Altschul\*  
Diane Ashinoff\*  
Leo Ausch  
Philip C. Ball  
Lillian Bohorad  
Baruch Brown  
Lillian Brown  
Nathan Cantin\*  
Naomi V. Ehrenworth\*  
Morton N. Freedman\*  
Pete Gady  
Maurice Garson\*  
Helen G. Gifford\*  
Irving Glaser\*  
Meyer Glazer  
Saul Glickman  
Thelma Kayer Goldman  
Hattie Goldstone\*  
Roberta B. Hamovit\*  
Reva Lehman Hoffman  
Wilma Isay  
Bella Grant Jacobs\*  
George M. Kaufman  
Hyman Kerner  
Neil T. Kinnear III  
Gertrude Leopold  
Kleinfeld\*  
Edith L. Laderberg  
Lenore Laibstain\*  
Simon Landy  
Michel Larar  
Fannie Blum Liebman\*  
Willard Longman  
Isaac Lubschutz\*  
Samuel Marcus\*  
Augusta Marx\*  
Leona Matlin  
Max Meyer  
Sylvia Miller  
Irving Milrod  
Leya Morozova  
Charles G. Nusbaum  
Willis Partridge  
Anne Pisone  
Samuel Poppel  
Dr. James Guy Price\*  
Lynda A. Reynolds  
Zelma G. Rivin  
Kathy Rosenbach\*

Belle Koenigsberg  
Rosenbaum  
Kate Rosenberg  
Mary Schloss  
Jessie Schnitzer  
Ben Paul Snyder\*  
Joseph H. Snyder\*  
Sol H. Snyder\*  
Helene Spilka  
Aubrey H. Straus  
Sara U. Talley  
Sigmund Ullman\*  
Murry Wolfson  
Sara Woodson

### November 4 - 10

Hilda Ausch  
William J. Berman\*  
Flora Bress  
Howard B. Brown  
Celia Brown\*  
Elijah Chertoff  
Ruth S. Cooper\*  
Esther Duny  
Hattie Ein  
Alexander Emdin\*  
Nathan Feuerstein  
Jack Flax  
Alice R. Frank  
Sig S. Front  
Irwin I. Gurflein  
Thomas Haywood  
Saida S. Heller\*  
Gary Joel Hirsch\*  
Jeff Hofheimer  
Paul Jacobs  
Elsa Jaffe  
Clara Kastner  
Ferdinand Kastner  
Doris B. Kaufman  
Edward J. Kesser  
Robert Kirby, Jr.  
Alice Katz Korn\*  
Aaron Pincus Kruger\*  
Shirley Landy  
Benjamin Legum  
Sadie Himmelstein  
Lesser  
Joseph David Levkovitz  
Michael Levy  
Janet Mann  
Louis Mansbach\*  
Maurice Mednick\*  
Jerome D. Melville\*

Erwin L. Michaels\*  
Cecilia Mickelburg  
Muriel Gottheimer  
Mizroch\*  
Charles Moody  
Ernest "Ernie"  
Nadelstein  
Martha Hatchett  
Owens\*  
Arthur Pogson\*  
Jeannette C. Ricewasser  
Minnie Rosenberg\*  
Edward Rothbart  
Maurice Sachs  
Abe Salomonsky\*  
Tillie Sloane  
Joyce H. Strelitz  
Oscar Tate\*  
Eloise Lowenberg  
Van Os\*  
Malcolm Wasserman  
Harry Wexler  
Gail Rubin White\*  
Catherine Wynne\*  
Gertrude Zedd

### November 11 - 17

Mollie Bartel  
Naomi Bass  
Mildred A. Baum\*  
Jack Berkowitz\*  
Jane Beskin  
Dr. Herbert H. Bonnie\*  
Vera Alder Boone  
Stanley Brenner  
Betty Brum  
Eugene Caligari, Jr.\*  
Lillian Einhorn  
Lillian Emdin\*  
Anna Engelberg  
Angela Eqwall  
Nathan Samuel  
Finkelman  
Sidney Finklestein  
Beatrice O. Fried\*  
Esther Kahn Friedman\*  
Florence Jaffe  
Ganderson  
Phillip Goldstein  
Victor Goodman\*  
Mark Hasse  
Leonard Karp  
Minnie Krauss\*  
Dorothea Malek

Langston  
Bessie Legum  
Mae B. Liebman\*  
Dolly Loeb\*  
Regina R. Mansbach\*  
Hallie Miller\*  
Daniel Milligan  
Charlotte Moos  
Pete Novish  
Arnold Orleans\*  
Rachel Otto  
Ann Schloss Pettey\*  
Warren W. Porter  
Bevalan Rafal  
Godwin Rapoport\*  
Sandra Snyder  
Rosenberg  
David Rosenfeld  
Helman Rosenthal  
Emanuel Roth  
Harry N. Rubin\*  
Deborah Bass Sadoff  
Shirley Salasky  
Evelyn Salasky\*  
Ella Salomonsky\*  
Gerald Sandelstein  
Ida Saul  
Helen Schulwolf  
Harry Seiderman\*  
Robert "Bobby"  
Sherman  
Elvira Simon  
Ben Simon\*  
Yetta Snyder\*  
Sidney A. Snyder\*  
Daniel A. Tavss  
Henry Van Os\*  
Murray Waitzer\*  
Sarah Whitlock\*  
Tom Williams

### November 18 - 24

Irving Aftel  
Rose Lasting Berman\*  
Herbert L. Black\*  
Flora Cahan  
Stewart Cogan  
Sidney Dobbs\*  
William Elkin\*  
Stanley Fass  
Margaret W. Feldman\*  
Dorothy Finch  
Joseph Forte  
Fannie G. Friedman\*

Anne K. Friedman\*  
Henry Galumbeck  
Sydney Gates  
Mollie Gendler  
Mark Gilbert  
Goldie Ginsberg  
Dr. Harvey Glick  
Henry I. Jaffe\*  
Bernard Kahn  
Sol Klinghoffer  
Kate R. Kohn  
Polina Koso  
Russell L. Kramer\*  
Molly Rosen Kress  
Rhoda Kroll  
Lucille H. Laderberg\*  
Sarah W. Levy\*  
Miriam Goodman  
Lowenberg  
Donald McNutt  
Frances Mendelson  
Helen Egermann  
Michalove  
Diane Lee Langston  
Michalove  
Evelyn M. Nordlinger\*  
Alvin Pattashnick  
Hope W. Price  
Blanche Reisner  
Bella Rivin  
Walter D. Rosenberg\*  
Nancy Schnader  
Neil Michael Sherry  
Patricia Smolen  
Robert Isadore Sobel\*  
Frederick James Sterns  
Fredericka Sygal  
Rosa S. Van Os\*  
Miriam Waranch  
Marcia Weinberg  
Jennie Bloxberg  
Weinberger  
Frank Weisel, Sr.\*  
Jules Zelinger

### November 25 - December 1

Betty Alper  
Stephen David Baer  
Adrienne M. Ball  
Louis Bartley\*  
David Gerald Bress  
Alan Brody\*  
Robert H. Brown

Eugene Cohen  
Reba B. Cohen\*  
Lee David Cohen\*  
Isaac V. Cohen\*  
Leslie Colen  
Michael Cooper  
E. Lee Copeland\*  
David Robert Davidson\*  
Samuel Doctor\*  
Harry E. Fivel\*  
Joe Freed  
Sandra Frieder  
Martin Glaser  
Bernard Goldman  
Douglas Haber  
J. B. Hecht\*  
Irma S. Hirschler\*  
Harold Isay  
Solomon Jaffe  
Harry H. Kanter\*  
H. Lee Kanter\*  
Bessie King\*  
Benjamin Klein  
Arthur Kraus  
Esther S. Legum\*  
Simon Lesser\*  
Shirley S. Levine  
Alicia Caro Luna  
Harry H. Mansbach\*  
Edward Marx\*  
Myrtle McIntyre  
Arther Morris\*  
Helen Nesson  
Louis Pachter  
Paul Rafferty  
Bernard Ries\*  
Lillian Harris Schewel  
Chris Smith  
Jeanette Spigel  
Sheila Sutland Pakula  
Eva Kan Sweet\*  
Sandra Velez  
Herman Wagenheim\*  
Pauline Wexler  
Sol Whitehill\*

\* denotes memorial plaque



# NOVEMBER 2018

SUN.	MON.	TUES.	WED.	THUR.	FRI.	SAT.
To add an event to the Temple calendar, please email <a href="mailto:reservations@ohefsholom.org">reservations@ohefsholom.org</a> .				1	2 <b>6:30 pm</b> Shabbat Services	3 <b>9:00 am</b> Torah Study Intro to Judaism B'nai Mitzvah Classes <b>10:30 am</b> Shabbat Services
4 <b>Daylight Savings Ends</b> <b>8:45 am</b> Sunday Learning <b>12:30 pm</b> SLC Faculty Meeting	5	6 <b>4:00 pm</b> Torah Study <b>4:00 pm</b> House Committee Meeting	7 <b>12:00 pm</b> OST & OSF Officers Meeting <b>6:00 pm</b> Men's Club Meeting	8 <b>9:00 am</b> Walking Group (offsite) <b>10:00 am</b> Quilting Group <b>12:00 pm</b> Executive Committee Meeting <b>6:00 pm</b> Year 2 Life & Legacy (offsite)	9 <b>6:30 pm</b> Shabbat Services	10 <b>9:00 am</b> Torah Study Intro to Judaism B'nai Mitzvah Classes <b>10:30 am</b> Shabbat Services <b>11:30 am</b> Kiddush Luncheon
11 <b>Veterans Day</b> <b>8:45 am</b> Sunday Learning <b>10:00 am</b> Dedication of Veterans Bench <b>10:30 am</b> Carpool Cafe <b>11:00 am</b> Wiggles & Giggles	12	13 <b>11:30 am</b> Quilting Group <b>4:00 pm</b> Torah Study <b>6:00 pm</b> Sisterhood Book Club Meeting	14 <b>12:00 pm</b> Finance & Development Meeting <b>6:00 pm</b> Sunday Learning Town Hall Meeting	15 <b>7:00 pm</b> Board Meeting	16 <b>6:30 pm</b> Friday Night Live Services <b>7:45 pm</b> Prime Time Dinner	17 <b>9:00 am</b> Torah Study Intro to Judaism B'nai Mitzvah Classes <b>10:30 am</b> Shabbat Services & Bar Mitzvah of Johnny Williamson
18 <b>9:00 am</b> Walking Group (offsite)	19	20 <b>4:00 pm</b> Torah Study <b>6:00 pm</b> Thanksgiving Service & Reception (offsite)	21	22 <b>Thanksgiving</b> <b>(Office Closed)</b>	23 <b>(Office Closed)</b> <b>6:30 pm</b> Shabbat Services	24 <b>9:00 am</b> Torah Study Intro to Judaism B'nai Mitzvah Classes <b>10:30 am</b> Shabbat Services
25	26 <b>9:30 am</b> Soup Kitchen	27 <b>4:00 pm</b> Torah Study	28	29	30 <b>5:30 pm</b> Shabbat Dinner <b>6:30 pm</b> Shabbat Alive! Services with Rick Recht	



All are welcome to join the OST Walking Group on the Noland Trail in Newport News in November! This is a 5-mile walk around the beautiful Lake Maury. You can choose to do 3 miles.

**Thursday, November 8**  
**Sunday, November 18**  
**Time: 9:00 am**

Meet in the front parking lot at the Mariners Museum, 100 Museum Drive.  
Please RSVP to Sharon Nusbaum at [sharonuz@aol.com](mailto:sharonuz@aol.com) or call her at (757) 515-4226.  
Carpooling can be arranged upon request.



530 Raleigh Avenue, Norfolk, VA 23507  
757•625•4295 757•625•3762 (Fax)  
[www.ohefsholom.org](http://www.ohefsholom.org)

Rosalin Mandelberg, *Senior Rabbi*  
Jennifer Rueben, *Cantor*  
Lawrence A. Forman, *Rabbi Emeritus*

Non-Profit Org.  
US Postage  
**PAID**  
Norfolk, VA  
Permit No. 230

#### Officers

Karen Fine  
Matthew Weinstein  
Barbara Dudley  
Lawrence Steingold  
Steve Kayer

**President**  
**Vice-President**  
**Secretary**  
**Treasurer**  
**Member-at-Large**

#### Board of Directors

Harold Anten  
Carol Brum  
John Cooper  
Matthew Fine  
Tammi Foer  
Andrew Fox  
David Hirschler  
David Kushner  
Robert Levinson  
Robert Liverman  
Robin Mancoll  
Dr. David Metzger  
Marsha Moody  
Alyson Morrissey

Alyssa Muhlendorf  
Dr. Bert Newfield  
Sharon Nusbaum  
Ethan Ostroff  
Rick Rivin  
Nicole Rosenblum  
Paula Russel  
Margaret Sawyer  
Joashua Schulman  
Frank Scott  
Amy Weinstein  
Valeria Williamson  
Gail Wolpin

**OST Sisterhood Co-Presidents**  
Jeanne Miller & Abbey Pachter

**Men's Club Co-Presidents**  
Scott Galbraith & Mike Makela

**OSTY President** - Amelia Fox

#### Past Presidents

Minette Cooper  
Kim Simon Fink  
Linda Fox-Jarvis  
Robert C. Goodman, Jr.  
Steven Kayer  
Edward G. Kaufman  
Dr. Howard Kesser  
Edward A. Kramer  
Cathi M. Laderberg

Charles S. Nusbaum  
Robert C. Nusbaum  
William L. Nusbaum  
Kurt M. Rosenbach  
Dr. Robert M. Rubin  
Henry M. Schwan  
Linda Spindel  
Alan D. Stein

#### Honorary Directors

Thomas Bachman  
Terri Budman  
Allan Donn  
Morris Fine  
Sandra Forte-Nickenig  
Jay M. Friedman  
Leslie Friedman  
Mark Friedman  
Joan Harrison  
Mark Hecht  
Nancy Hirschler

Andrew C. Kline  
Steve Kocen  
Jay Legum  
Dr. Rachelle Luna  
Alex Pincus  
Dr. Meredith Rose  
June Saks  
Miriam Seeherman  
The Honorable Louis Sherman  
Louis D. Snyder

## Join OST for Shabbat Alive! Friday, November 30

### 5:30 pm Ohef Sholom Family Dinner

**\$12 for adults & children  
13 & older**

**FREE for children 13 & under**

To make dinner reservations, click  
on the *Shabbat Alive! Dinner*  
Quicklink on OST's homepage at  
[www.ohefsholom.org](http://www.ohefsholom.org).

#### Dinner Menu

**(catered by Larry Adler)**

Chicken Marsala & Farfalle Noodles  
Mixed Vegetables  
Greek Salad  
Vegetarian Option Available  
For Kids: Chicken Tenders

## 6:30 pm Shabbat Alive! Family Service featuring Rick Recht

Join Rabbi Roz and Cantor Jen as they  
welcome Rick Recht to Ohef Sholom  
Temple for a fun, unique Shabbat  
experience for the whole family!



This event is sponsored by  
**United Jewish Federation**  
OF TIDEWATER

For more information, contact Lisa Rosenbach at  
[lrosenbach@ujft.org](mailto:lrosenbach@ujft.org)

[rickrecht.com](http://rickrecht.com)  
[facebook.com/rickrechtworld](https://facebook.com/rickrechtworld)



# shabbat

for everyone

Dec. 7

Teen Social  
**7:10**

Pre-neg  
**5:30**  
(Snacks)

Multi-generational  
Shabbat Service  
**6:00**

Sisterhood sponsored  
*175th Anniversary*  
*Chanukah Dinner*  
**6:45**

Please bring  
donations of  
warm gloves,  
hats or socks for  
NEST

**Dinner Menu**  
Beef Brisket  
Roasted Carrots  
Fresh Green Salad  
Potato Latkes with fixings  
Challah  
**Vegetarian** Meatloaf  
**Children** Chicken Nuggets  
**Dessert**  
Brownies & Donut Holes

**Early reservations made by November 30:**  
Adults - \$15, Children 12 & Under - \$6

**Reservations made after November 30:**  
Adults - \$20, Children 12 & Under - \$10

**NO RESERVATIONS WILL BE ACCEPTED  
AFTER DECEMBER 4**

**To make your reservation:**

- Return this form with your check to Sisterhood, Ohef Sholom Temple, 530 Raleigh Avenue, Norfolk, VA 23507
- Pay online by clicking on **Chanukah Dinner Quicklink** at [www.ohefsholom.org](http://www.ohefsholom.org).

Your reservation is confirmed when payment is received.

*No phone reservations will be accepted.*

Names of Adults: \_\_\_\_\_  
\_\_\_\_\_

Names of Children: (12 & Under): \_\_\_\_\_  
\_\_\_\_\_

Reserve a High Chair? (circle one) YES NO If yes, how many? \_\_\_\_\_

Vegetarian? (circle one) YES NO If yes, how many? \_\_\_\_\_

*I would like to sit with:* \_\_\_\_\_